

WAAS CH <b>60905</b> W28A	APP CRS <b>283°</b>	Rwy Idg <b>9290</b> TDZE <b>31</b> Apt Elev <b>31</b>
---------------------------------	------------------------	---

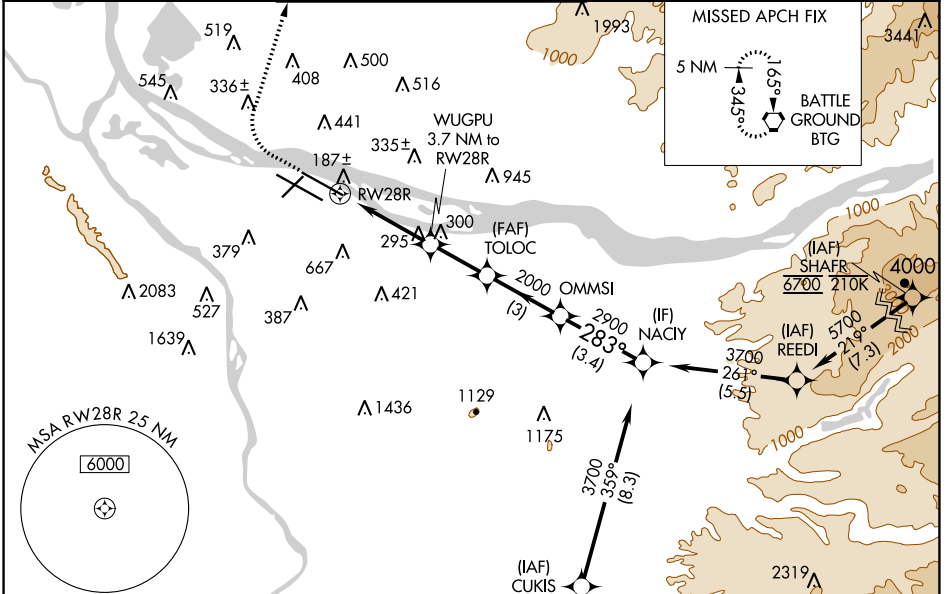
# RNAV (GPS) X RWY 28R

PORTLAND INTL (PDX)

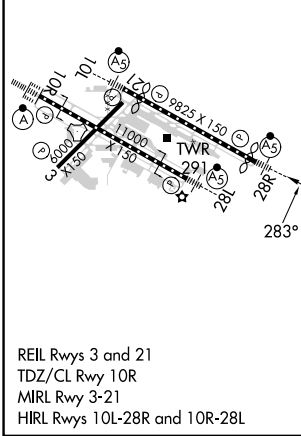
**⚠** For uncompensated Baro-VNAV systems, LNAV/VNAV NA below -6°C (22°F) or above 54°C (130°F). Simultaneous approach authorized. LNAV procedure NA during simultaneous operations. DME/DME RNP-0.3 NA. Use of FD or AP providing RNAV track guidance required during simultaneous operations. For inop ALS increase LNAV Cat C/D visibility to RVR 6000.

**MALSR**  
MISSED APPROACH: Climb to 600 then climbing right turn to 4200 direct BTG VORTAC and hold, continue climb-in-hold to 4200.

D-ATIS <b>128.35</b> <b>269.9</b>	PORTLAND APP CON <b>124.35 299.2</b>	PORTLAND TOWER Rwy 10L-28R <b>118.7 257.8</b> Rwys 3-21, 10R-28L <b>123.775 251.125</b>	GND CON <b>121.9 348.6</b>	CLNC DEL <b>120.125 318.1</b>	CPDLC
---	---	---	-------------------------------	----------------------------------	-------



ELEV 31	<b>D</b>	TDZE 31
---------	----------	---------



600	4200	BTG	VGS1 and RNAV glidepath not coincident (VGS1 Angle 3.00/TCH 70).			
*LNAV only		WUGPU 3.7 NM to RWY28R	TOLOC 2000	OMMSI 2900	NACIY 3700	
*1.1 NM to RWY28R		1260*	2000	283°	2900	GP 3.00° TCH 54'
1.1	2.6 NM	2.3 NM	3 NM	3.4 NM		
CATEGORY	A	B	C	D		
LPV DA	281/24		250 (300-½)			
LNAV/VNAV DA	446/45		415 (500-¾)			
LNAV MDA	440/24	409 (500-½)		440/40	409 (500-¾)	
<b>C</b> CIRCLING	720-1 689 (700-1)	760-1 729 (800-1)	1060-3		1029 (1100-3)	

NW-1, 11 JUL 2024 to 08 AUG 2024

NW-1, 11 JUL 2024 to 08 AUG 2024