

QUANTICO, VIRGINIA

ILS or LOC/DME RWY 2

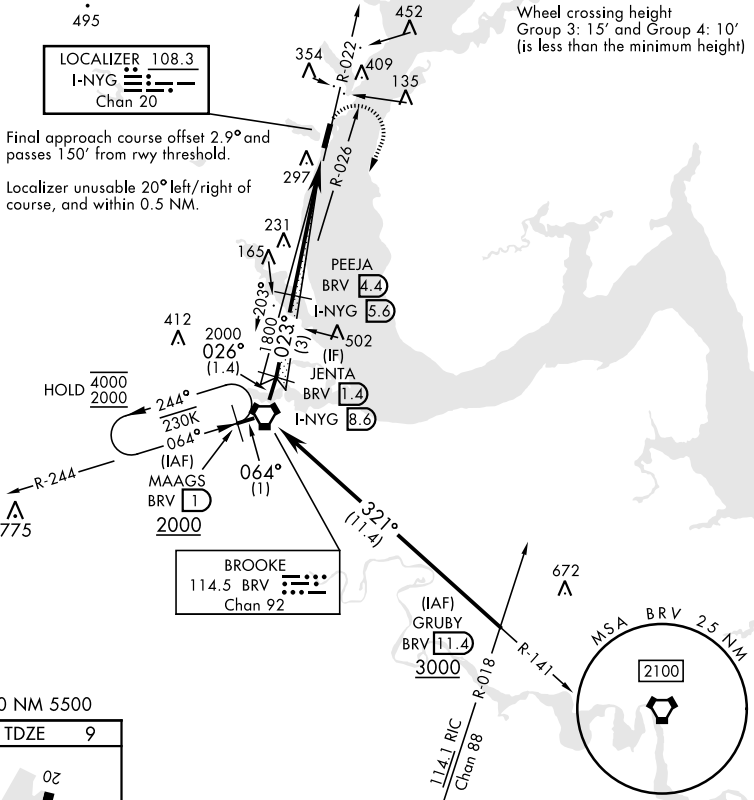
LOC/DME I-NYG 108.3 Chan 20	APCH CRS 023°	Rwy Idg TDZE Arprt Elev 4250 9 10
---	-------------------------	---

AL-339 [USN]

QUANTICO MCAF (TURNER FLD) (KNYG)

TACAN required. * Circling not authorized W of Rwy 2-20.	MISSED APPROACH: Climbing right turn to 2000 direct BRV VORTAC, then via BRV R-244 to MAGGS and hold.
---	---

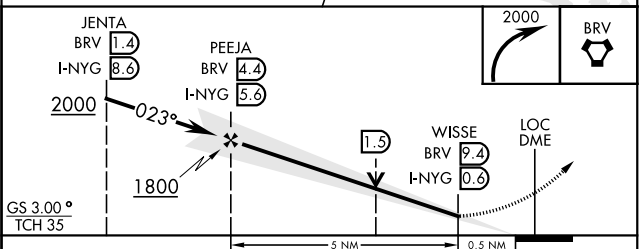
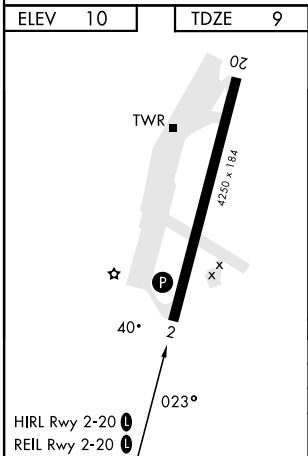
ATIS ★ 263.15	POTOMAC APP/DEP CON 128.525 306.925	TOWER ★ 118.6 (CTAF) 0360.2	GND CON 121.75 340.2	ASR/PAR
-------------------------	---	---------------------------------------	--------------------------------	---------



NE-3, 11 JUL 2024 to 08 AUG 2024

NE-3, 11 JUL 2024 to 08 AUG 2024

EMERG SAFE ALT 100 NM 5500



CATEGORY	A	B	C	D
S-ILS 2	259-¾		250	(300-¾)
S-LOC 2	500-1	491 (500-1)	500-1¾	491 (500-1¾)
CIRCLING*	500-1 490 (500-1)	680-1 670 (700-1)	760-2¼ 750 (800-2¼)	800-2½ 790 (800-2½)

QUANTICO, VIRGINIA
Amdt 1 29DEC22

38°30'N-77°18'W

QUANTICO MCAF (TURNER FLD) (KNYG)

ILS or LOC/DME RWY 2