

QUANTICO, VIRGINIA

# RNAV (GPS) RWY 2

APCH CRS	Rwy Idg	4250
026°	TDZE	9
	Arprt Elev	10

AL-339 (USN)

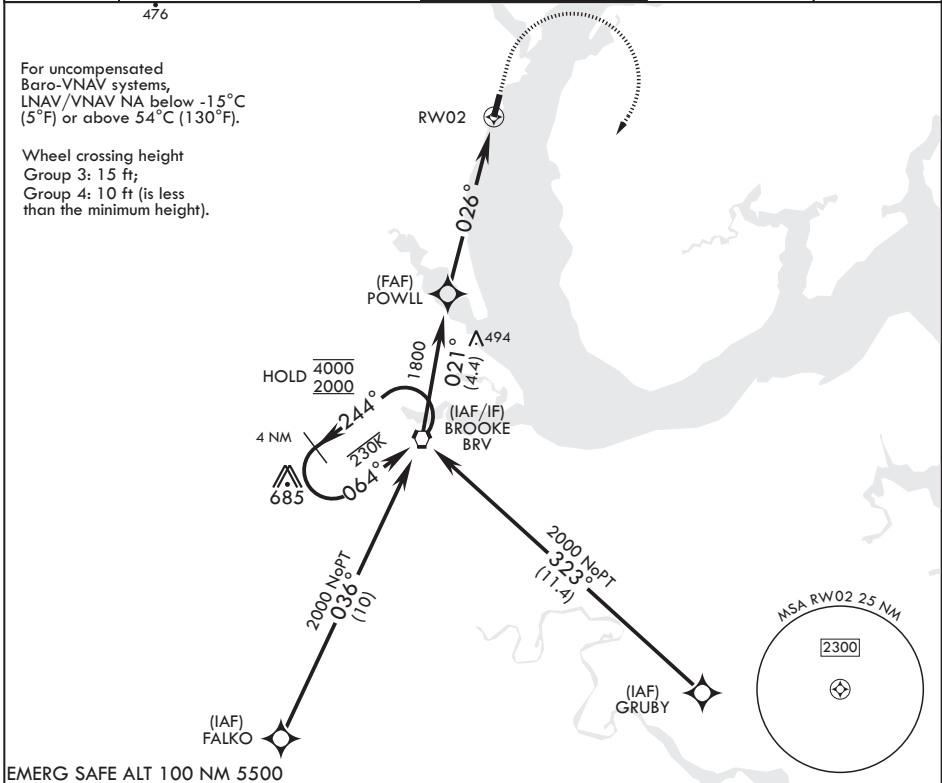
QUANTICO MCAF (TURNER FLD) (KNYG)

RNP APCH

MISSED APPROACH: Climb to 600, then climbing right turn to 2000 direct BRV VORTAC and hold.

\* Circling not authorized W of Rwy 2-20.

ATIS*	POTOMAC APP CON/DEP CON	TOWER*	GND CON	ASR/PAR
263.15	128.525 306.925	118.6 (CTAF) 0 360.2	121.75 340.2	



EMERG SAFE ALT 100 NM 5500

4 NM Holding Pattern	VORTAC	600	2000	BRV	ELEV 10	TDZE 9
4000 2000	← 244° 064° → 2000	↑ crs 026°	↻	⊙		
GP 3.00° TCH 35	021°	1800	1.6 NM to RW02	RW02		
	POWLL					
			5.5 NM			
CATEGORY	A	B	C	D		
LNAV/VNAV DA	429-1 $\frac{1}{8}$ 420 (500-1 $\frac{1}{8}$ )	440-1 $\frac{1}{4}$ 431 (500-1 $\frac{1}{4}$ )	448-1 $\frac{1}{4}$ 439 (500-1 $\frac{1}{4}$ )	459-1 $\frac{1}{8}$ 450 (500-1 $\frac{1}{8}$ )		
LNAV MDA	560-1 551 (600-1)	660-1 650 (700-1)	700-2 690 (700-2)	740-2 $\frac{1}{4}$ 730 (800-2 $\frac{1}{4}$ )		
CIRCLING*	560-1 550 (600-1)	660-1 650 (700-1)	700-2 690 (700-2)	740-2 $\frac{1}{4}$ 730 (800-2 $\frac{1}{4}$ )	HIRL all Rwys 0 026°	REIL all Rwys 0

NE-3, 11 JUL 2024 to 08 AUG 2024

NE-3, 11 JUL 2024 to 08 AUG 2024

QUANTICO, VIRGINIA  
Amdt 4 03NOV22

38°30'N - 77°18'W

QUANTICO MCAF (TURNER FLD) (KNYG)

# RNAV (GPS) RWY 2