

# RNAV (GPS) RWY 33L

APCH CRS <b>325°</b>	Rwy Idg TDZE Arprt Elev <b>8352</b> <b>733</b> <b>761</b>
-------------------------	--

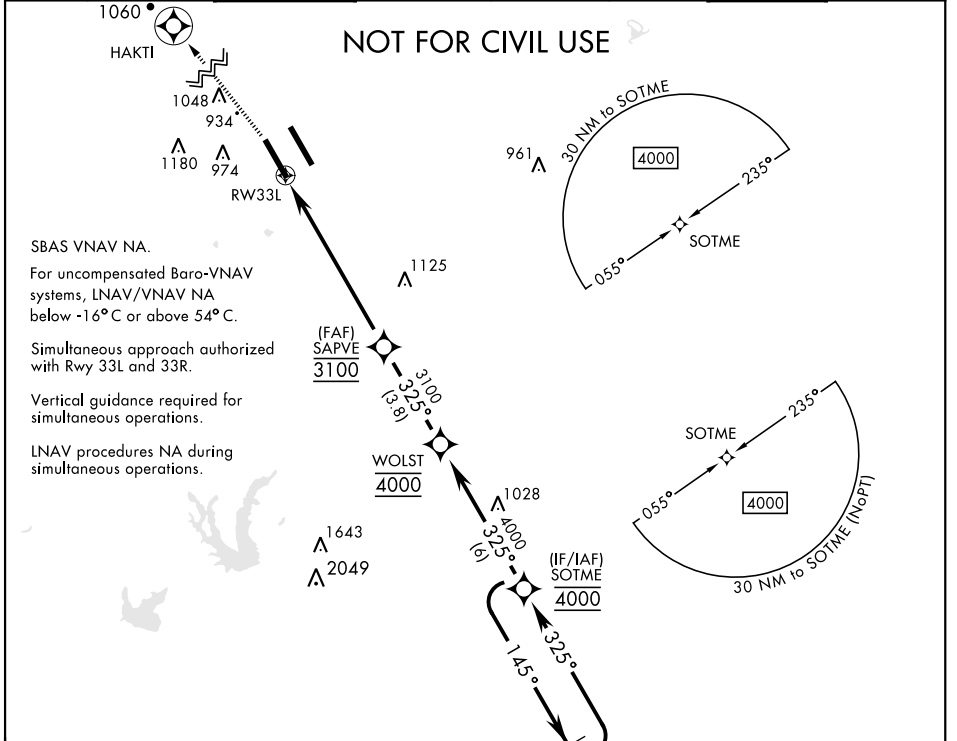
[USAF]

RANDOLPH AFB (KRND)

RNP APCH - GPS  
\* Circling not authorized NE of Rwy 15R-33L.

MISSED APPROACH: Climbing to 1200, then climbing left turn to 3000 direct HAKTI. Expect ATC instructions.

ATIS ★ <b>290.525</b>	SAN ANTONIO APP CON <b>128.05 318.1</b>	TOWER ★ <b>128.25 294.7</b>	GND CON <b>119.65 275.8</b>	CLNC DEL (RWY 15L-33R) <b>338.35</b>	HANGOVER ATIS ★ <b>327.8</b>	HANGOVER TOWER ★ <b>120.5 291.1</b>	HANGOVER GND CON <b>124.75 353.75</b>
--------------------------	--	--------------------------------	--------------------------------	---	---------------------------------	--	--



SBAS VNAV NA.

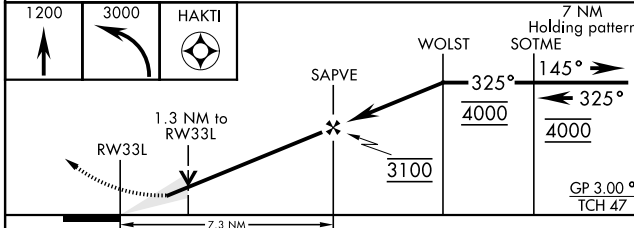
For uncompensated Baro-VNAV systems, LNAV/VNAV NA below -16°C or above 54°C.

Simultaneous approach authorized with Rwy 33L and 33R.

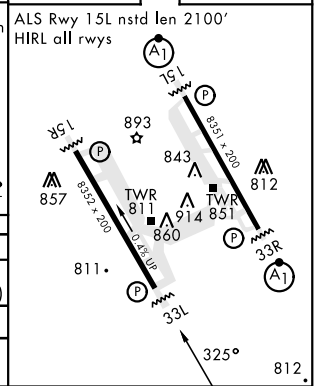
Vertical guidance required for simultaneous operations.

LNAV procedures NA during simultaneous operations.

EMERG SAFE ALT 100 NM 4100



ELEV 761	TDZE 733
----------	----------



CATEGORY	A	B	C	D	E
LNAV/VNAV DA	983/40	250	(300-¾)	992/40 259 (300-¾)	1030/45 297 (300-¾)
LNAV MDA	1180/55	447 (500-1)	1180-1¾	447 (500-1¾)	
CIRCLING*	1240-1 479 (500-1)	1280-1 519 (600-1)	1500-2 739 (800-2)	1800-3	1039 (1100-3)

# RNAV (GPS) RWY 33L

SC-3, 11 JUL 2024 to 08 AUG 2024

SC-3, 11 JUL 2024 to 08 AUG 2024