

UNIVERSAL CITY, TEXAS

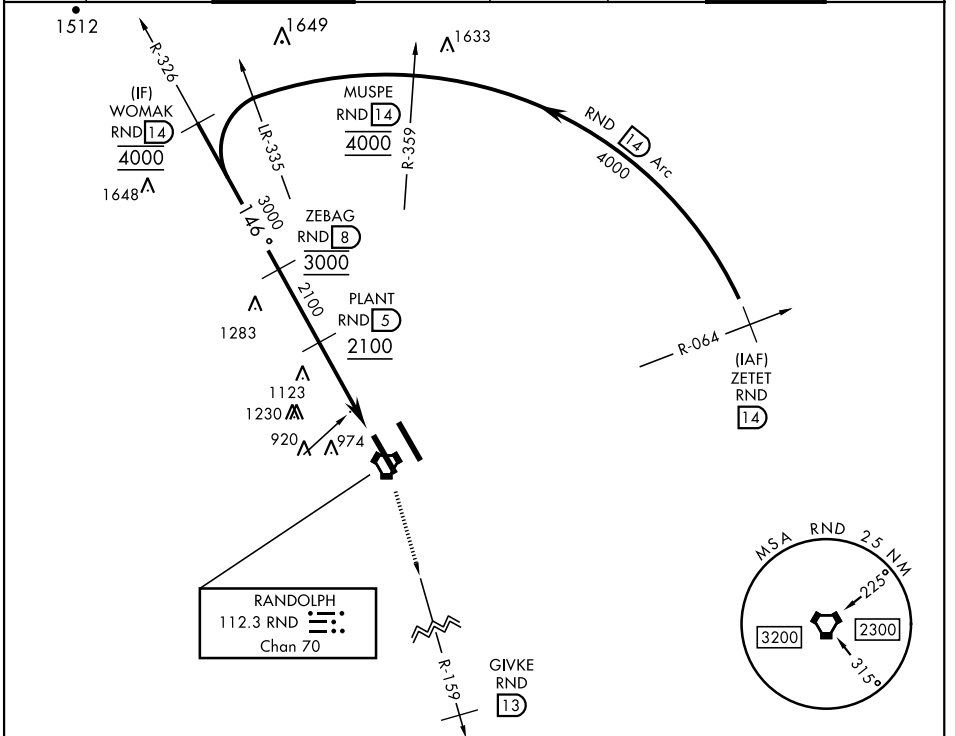
TACAN RWY 15R

VORTAC RND 112.3 Chan 70	APCH CRS 146°	Rwy Idg TDZE 8352 761 Arprt Elev 761
--	-------------------------	--

[USAF]

RANDOLPH AFB (KRND)

RADAR required		MISSED APPROACH: Climb to 3000 out RND VORTAC R-159 to 13 DME (GIVKE). Expect ATC instructions.					
*Circling not authorized NE of Rwy 15R-33L.							
ATIS ★ 290.525	SAN ANTONIO APP CON 128.05 318.1	TOWER ★ 128.25 294.7	GND CON 119.65 275.8	CLNC DEL (RWY 15L-33R) 338.35	HANGOVER ATIS ★ 327.8	HANGOVER TOWER ★ 120.5 291.1	HANGOVER GND CON 124.75 353.75

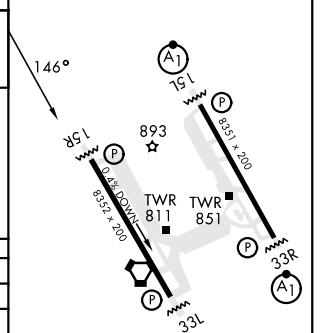
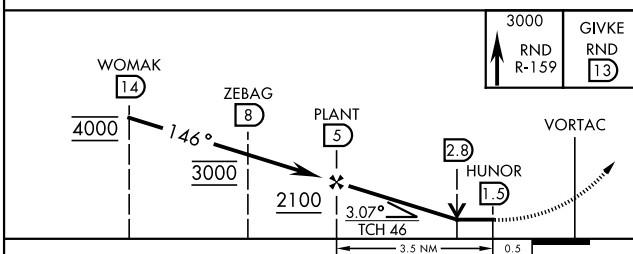


SC-3, 11 JUL 2024 to 08 AUG 2024

SC-3, 11 JUL 2024 to 08 AUG 2024

EMERG SAFE ALT 100 NM 4100

ELEV 761	TDZE 761
----------	----------



CATEGORY	A	B	C	D	E
S-15R	1380/55 619 (700-1)		1380-1 619 (700-1)		
CIRCLING*	1380-1 619 (700-1)		1500-2 739 (800-2)	1800-3 1039 (1100-3)	

HIRL all rwys
ALS Rwy 15L nstd len 2100'

UNIVERSAL CITY, TEXAS
Amdt 3 28DEC23

29°32'N-98°17'W

RANDOLPH AFB (KRND)

TACAN RWY 15R