

(YODUH1.YODUH) 24025

AL-341 (FAA)

RANDOLPH AFB (KRND)

YODUH ONE DEPARTURE (RNAV)

UNIVERSAL CITY, TEXAS

RNAV 1 - DME/DME IRU or GPS.

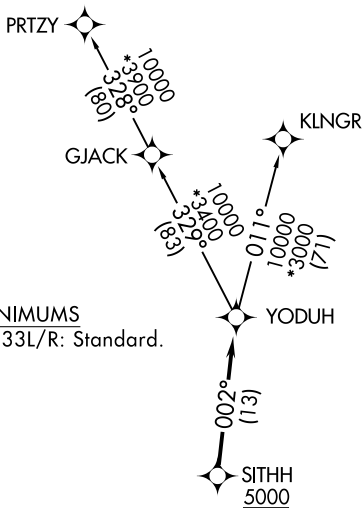
**TOP ALTITUDE:
ASSIGNED BY ATC**

RADAR required.

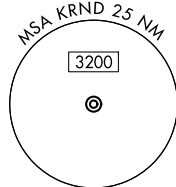
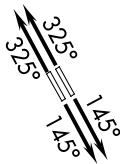
- SAN ANTONIO DEP CON
127.1 290.225
- ATIS *
- 290.525
- ATIS (HANGOVER) *
- 327.8
- CLNC DEL (Rwy 15L-33R)
338.35
- GND CON
119.65 275.8
- GND CON (HANGOVER)
124.75 353.75
- TOWER *
- 128.25 294.7
- HANGOVER TOWER *
- 120.5 291.1

TAKEOFF MINIMUMS

Rwys 15L/R, 33L/R: Standard.



NOTE: Aircraft destined for airports north/northeast of DFW terminal area must file the KLNGR Transition.



NOTE: Chart not to scale.

DEPARTURE ROUTE DESCRIPTION

TAKEOFF RUNWAYS 15L/R: Climb on heading 145° or as assigned by ATC, for vectors to SITHH, thence . . .

TAKEOFF RUNWAYS 33L/R: Climb on heading 325° or as assigned by ATC, for vectors to SITHH, thence . . .

. . . on track 002° to YODUH, then on Transition. Maintain ATC assigned altitude.

KLNGR TRANSITION (YODUH1.KLNGR)

PRTZY TRANSITION (YODUH1.PRTZY)

YODUH ONE DEPARTURE (RNAV)

(YODUH1.YODUH) 25JAN24

UNIVERSAL CITY, TEXAS
RANDOLPH AFB (KRND)

SC-3, 11 JUL 2024 to 08 AUG 2024

SC-3, 11 JUL 2024 to 08 AUG 2024