

# HI-TACAN Z RWY 13

TACAN RCA Chan <b>25</b>	APCH CRS <b>136°</b>	Rwy ldg <b>13,497</b> TDZE <b>3276</b> Arprt Elev <b>3276</b>
-----------------------------	-------------------------	---

[USAF]

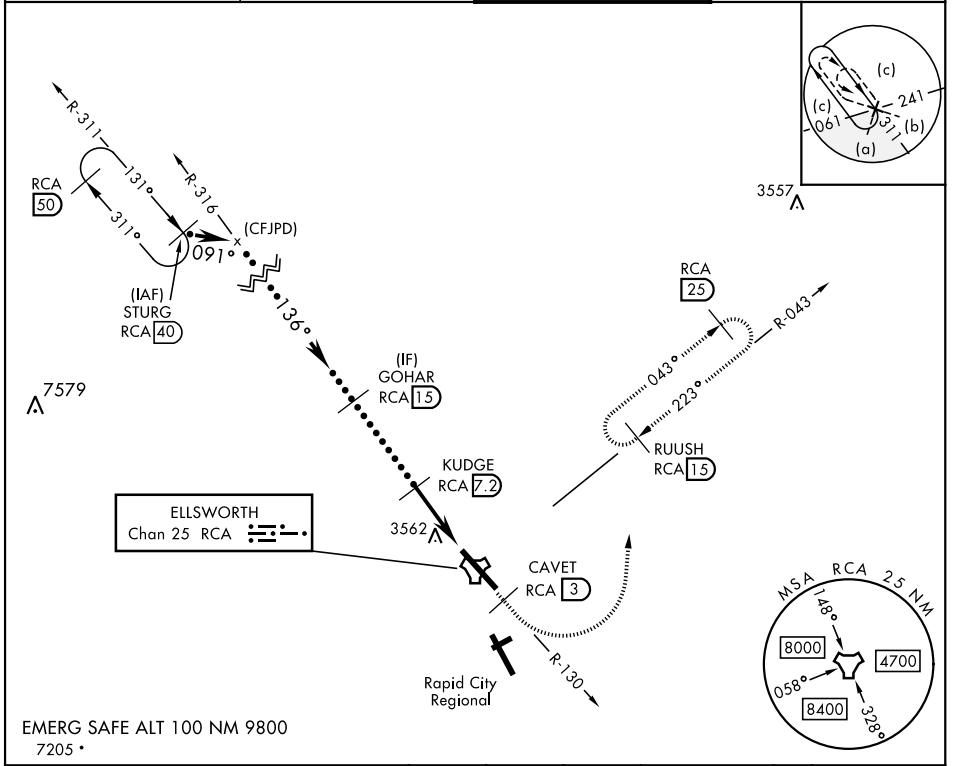
ELLSWORTH AFB (KRCA)

\* When ALS inop, increase CAT CDE vis to 1½ mile.  
 \*\* CAT E circling restricted to 28th BW aircraft only; 28th BW aircraft will remain within Class D airspace.



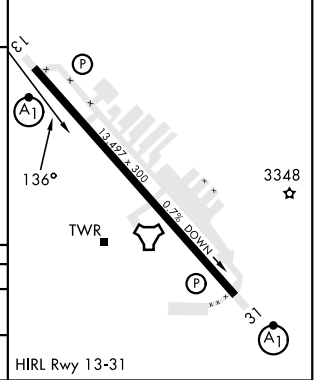
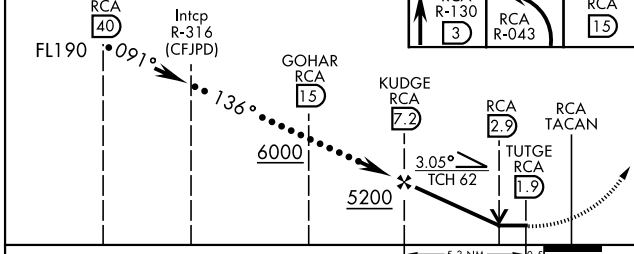
**MISSED APPROACH:** Track outbound RCA R-130 to 3 DME (CAVET), then turn left to join RCA R-043 to 15 DME (RUUSH) and hold. Maintain 6000.

ATIS * <b>120.625 269.9</b>	APP CON <b>119.5 259.1</b>	TOWER * <b>126.05 253.5</b>	GND CON <b>121.8 275.8</b>
--------------------------------	-------------------------------	--------------------------------	-------------------------------



EMERG SAFE ALT 100 NM 9800  
7205\*

STURG RCA 40	CAVET RCA R-130 3	RUUSH RCA 15	ELEV 3276	TDZE 3276
--------------	-------------------	--------------	-----------	-----------



CATEGORY	C	D	E
S-13 *	3820/60	544 (600-1½)	
CIRCLING **	3880-1¾ 604 (700-1¾)	3980-2¼ 704 (800-2¼)	4040-2¾ 764 (800-2¾)

# HI-TACAN Z RWY 13

NC-1, 11 JUL 2024 to 08 AUG 2024

NC-1, 11 JUL 2024 to 08 AUG 2024