

APP CRS	Rwy Idg	7031
226°	TDZE	3065
	Apt Elev	3080

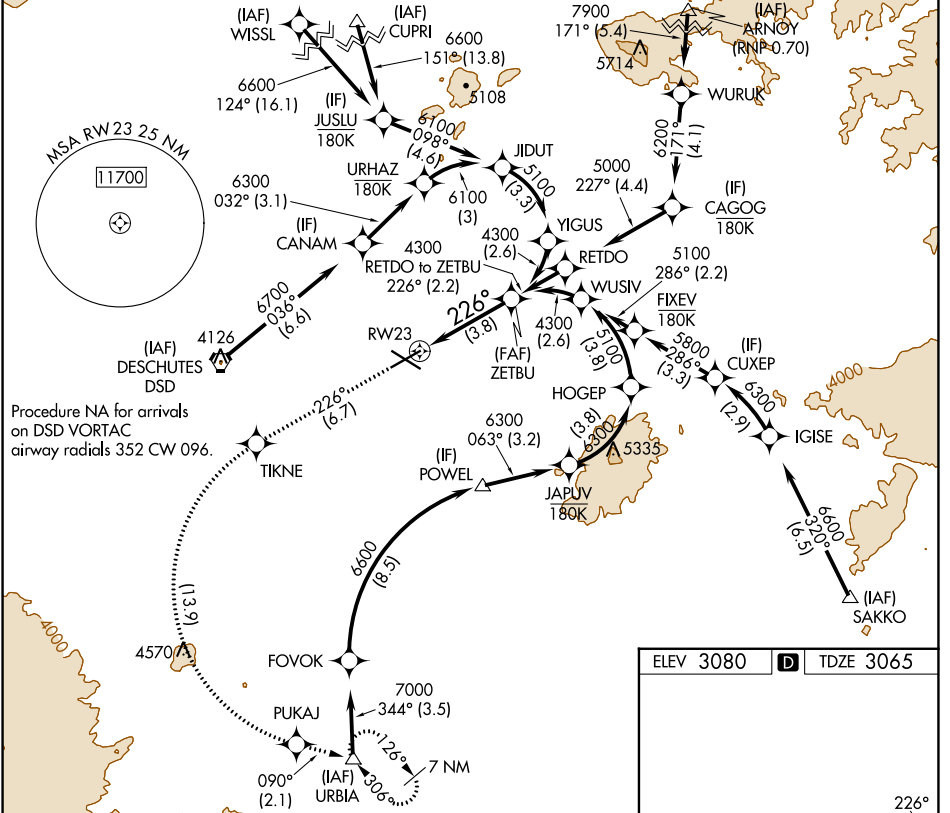
RNAV (RNP) Z RWY 23

ROBERTS FLD (RDM)

V For uncompensated Baro-VNAV systems, procedure NA below -20°C (-4°F) or above 53°C (129°F). For inop MALS, increase RNP 0.10 all Cats visibility to ¾ mile. RF required. GPS required.

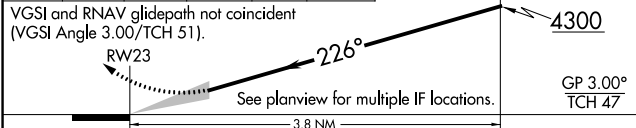
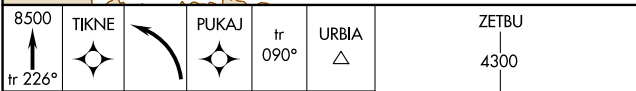
MALS MISSED APPROACH: Climb to 8500 on track 226° to TIKNE left turn to PUKAJ and on track 090° to URBIA and hold, continue climb-in-hold to 8500.

ATIS 119.025	SEATTLE CENTER 126.15 269.475	REDMOND TOWER* 124.5 (CTAF) 256.8	GND CON 121.8	UNICOM 122.95
------------------------	---	---	-------------------------	-------------------------



NW-1, 11 JUL 2024 to 08 AUG 2024

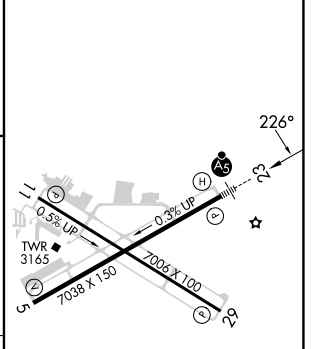
NW-1, 11 JUL 2024 to 08 AUG 2024



CATEGORY	A	B	C	D
RNP 0.10 DA		3315-½	250 (300-½)	
RNP 0.30 DA		3552-1¼	487 (500-1¼)	

AUTHORIZATION REQUIRED

ELEV 3080	D	TDZE 3065
-----------	----------	-----------



- REIL Rwy 5, 11, and 29
- HIRL Rwy 5-23
- MIRL Rwy 11-29