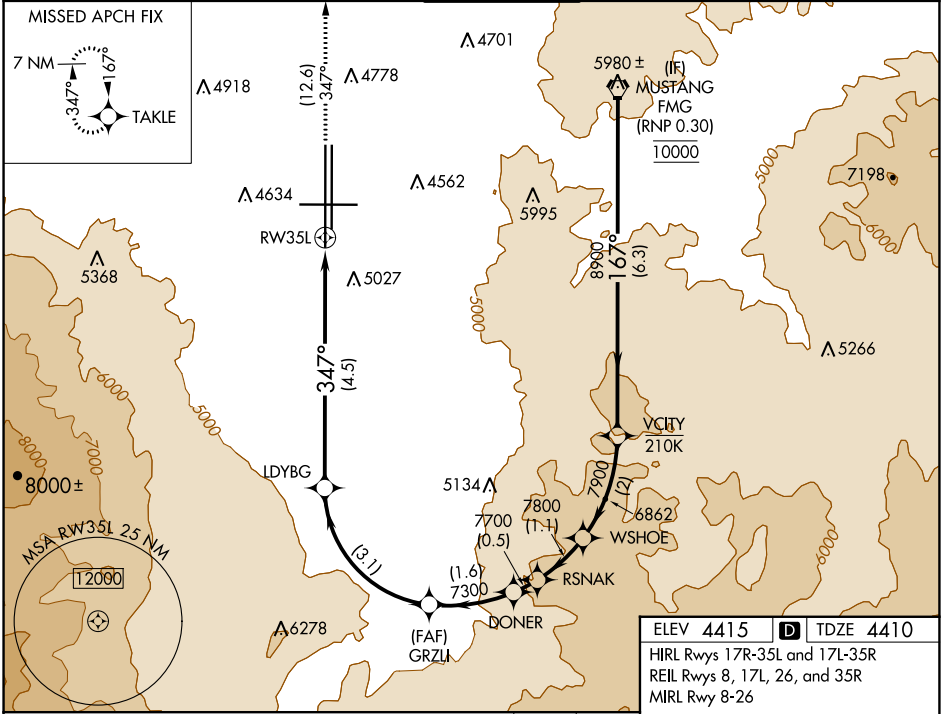


# RNAV (RNP) W RWY 35L

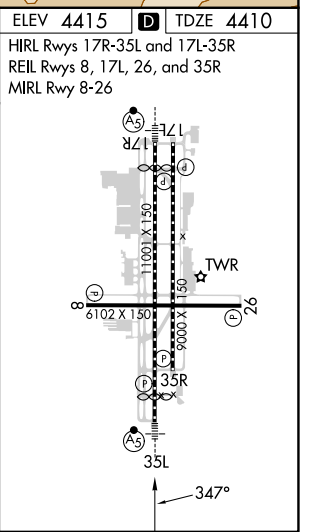
RENO/TAHOE INTL (RNO)

APP CRS <b>347°</b>	Rwy Idg TDZE Apt Elev	<b>10011</b> <b>4410</b> <b>4415</b>
------------------------	-----------------------------	--

RNP AR APCH - GPS.		MALSRL	MISSED APPROACH: Climb to 11000 on track 347° to TAKLE and hold, continue climb-in-hold to 11000. *Missed approach requires minimum climb of 300 feet per NM to 7140.					
<p>For uncompensated Baro-VNAV systems, procedure NA below -9°C or above 35°C.</p>			D-ATIS	NORCAL APP CON	RENO TOWER	GND CON	CLNC DEL	CPDLC
<b>135.8 363.0</b>		<b>119.2 279.55 126.3 353.9</b>		<b>118.7 257.8</b>	<b>121.9 348.6</b>	<b>124.9 370.85</b>		



FVG VORTAC	VCITY	WSHOE	RSNAK	DONER	GRZLI	LDYBG	RW35L
10000							
GP 3.50° TCH 72							
6.3 NM	2 NM	1.1 NM	0.5 NM	1.6 NM	3.1 NM	4.5 NM	
CATEGORY	A	B	C	D			
RNP 0.10 DA*	4736-1/2		326 (400-1/2)				
RNP 0.30 DA	5349-2		939 (1000-2)				
<b>AUTHORIZATION REQUIRED</b>							



SW-4, 11 JUL 2024 to 08 AUG 2024

SW-4, 11 JUL 2024 to 08 AUG 2024