

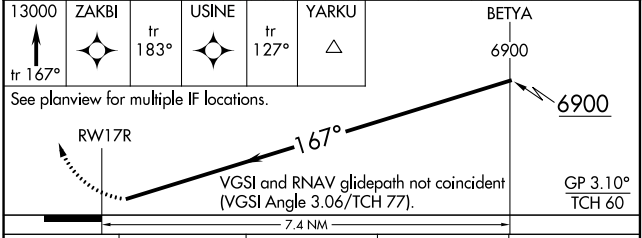
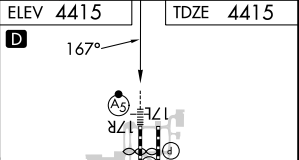
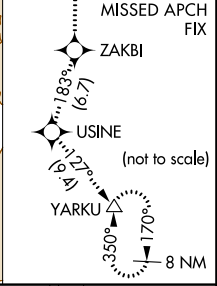
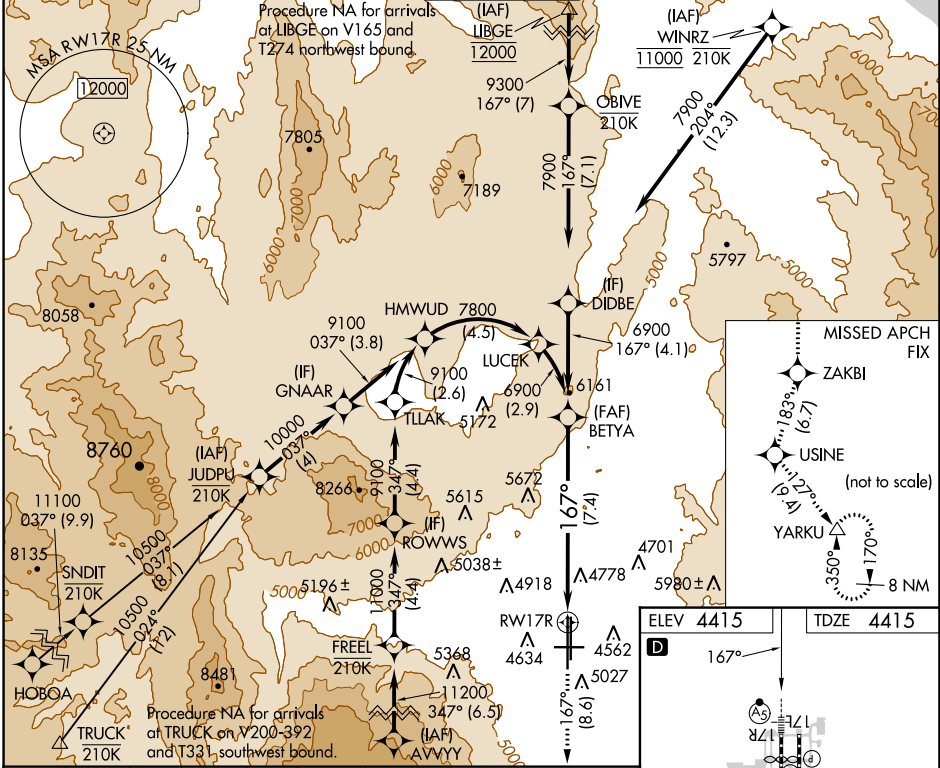
# RNAV (RNP) Z RWY 17R

RENO/TAHOE INTL (RNO)

APP CRS	Rwy Idg	<b>10001</b>
<b>167°</b>	TDZE	<b>4415</b>
	Apt Elev	<b>4415</b>

RNP AR APCH - GPS.	MALSR	MISSED APPROACH: Climb to 13000 on track 167° to ZAKBI and on track 183° to USINE and on track 127° to YARKU and hold, continue climb-in-hold to 13000. *Missed approach requires minimum climb of 266 feet per NM to 7240.
▼ For uncompensated Baro-VNAV systems, procedure NA below -9°C or above 54°C. For inop ALS, increase RNP 0.30 DA visibility all Cats to 1½ SM.		

D-ATIS	NORCAL APP CON	RENO TOWER	GND CON	CLNC DEL	CPDLC
<b>135.8 363.0</b>	<b>119.2 279.55 126.3 353.9</b>	<b>118.7 257.8</b>	<b>121.9 348.6</b>	<b>124.9 370.85</b>	



CATEGORY	A	B	C	D
RNP 0.10 DA*		4754/26	339 (400-½)	
RNP 0.30 DA		5092-1½	677 (700-1½)	

## AUTHORIZATION REQUIRED

MIRL Rwy 8-26  
REIL Rwsy 8, 17L, 26, and 35R  
HIRL Rwsy 17R-35L and 17L-35R

SW-4, 11 JUL 2024 to 08 AUG 2024

SW-4, 11 JUL 2024 to 08 AUG 2024