

# RNAV (RNP) Z RWY 35R

RENO/TAHOE INTL (RNO)

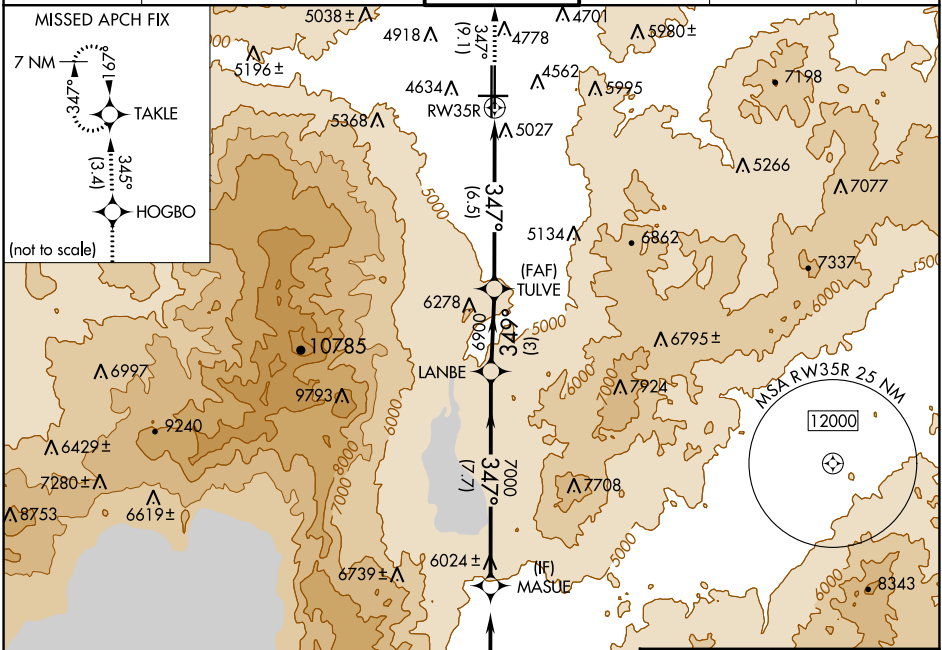
APP CRS <b>347°</b>	Rwy Idg <b>9000</b>
	TDZE <b>4408</b>
	Apt Elev <b>4415</b>

RNP AR APCH - GPS.

**⚠** For uncompensated Baro-VNAV systems, procedure NA below -9°C or above 34°C.

MISSED APPROACH: Climb to 11000 on track 347° to HOGBO and on track 345° to TAKLE and hold, continue climb-in-hold to 11000. \*Missed approach requires minimum climb of 301 feet per NM to 7150.

D-ATIS <b>135.8 363.0</b>	NORCAL APP CON <b>119.2 279.55 126.3 353.9</b>	RENO TOWER <b>118.7 257.8</b>	GND CON <b>121.9 348.6</b>	CLNC DEL <b>124.9 370.85</b>	CPDLC
------------------------------	---	----------------------------------	-------------------------------	---------------------------------	-------

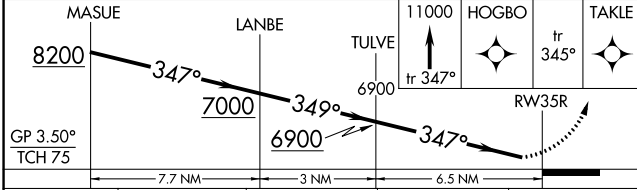
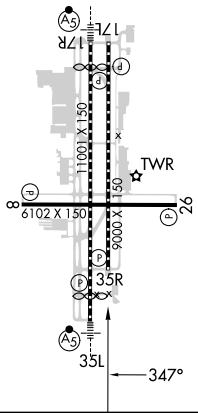


SW-4, 11 JUL 2024 to 08 AUG 2024

SW-4, 11 JUL 2024 to 08 AUG 2024

ELEV 4415 **D** TDZE 4408

REIL Rwy 8, 17L, 26, and 35R  
HIRL Rwy 17R-35L and 17L-35R  
MIRL Rwy 8-26



CATEGORY	A	B	C	D
RNP 0.11 DA*	4762-1		354 (400-1)	
RNP 0.30 DA	5349-2½		941 (1000-2½)	

## AUTHORIZATION REQUIRED