

WAAS CH <b>78309</b> <b>W17B</b>	APP CRS <b>167°</b>	Rwy Idg TDZE <b>4415</b> Apt Elev <b>4415</b>	<b>10001</b> <b>4415</b> <b>4415</b>
--	------------------------	---	--

# RNAV (GPS) X RWY 17R

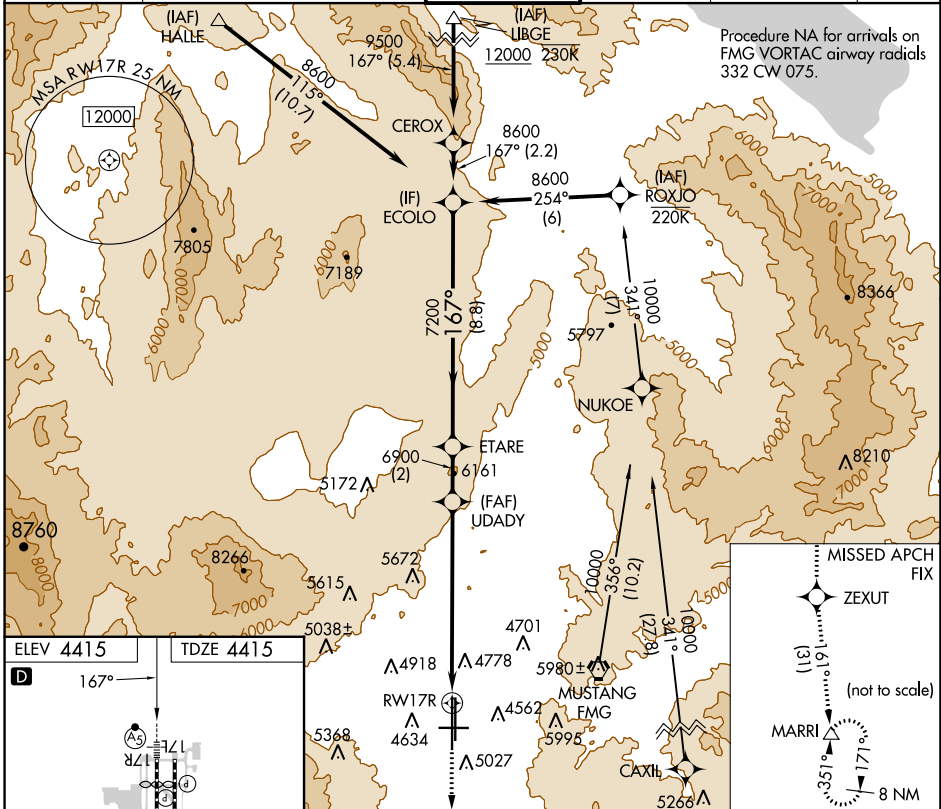
RENO/TAHOE INTL (RNO)

RNP APCH - GPS. MALSR MISSED APPROACH: Climb to 13000 direct ZEXUT and on track 161° to MARRI and hold.

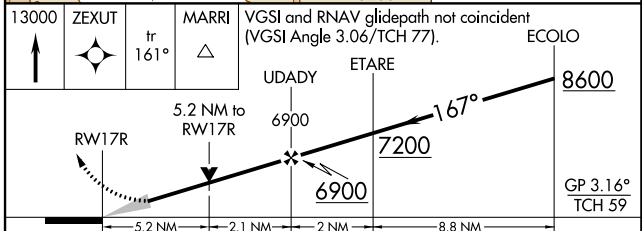
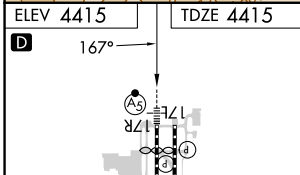
For inop ALS, increase LPV all Cats visibility to 2 1/2 SM.  
Inop table does not apply to LNAV all Cats.



D-ATIS <b>135.8 363.0</b>	NORCAL APP CON <b>119.2 279.55 126.3 353.9</b>	RENO TOWER <b>118.7 257.8</b>	GND CON <b>121.9 348.6</b>	CLNC DEL <b>124.9 370.85</b>	CPDLC
------------------------------	---	----------------------------------	-------------------------------	---------------------------------	-------



Procedure NA for arrivals on FMG VORTAC airway radials 332 CW 075.



CATEGORY	A	B	C	D
LPV DA	5239-1 7/8 824 (900-1%)			
LNAV MDA	6200/40 1785 (1800-3/4)	6200/55 1785 (1800-1)	6200-3	1785 (1800-3)

MIRL Rwy 8-26  
REIL Rws 8, 17L, 26, and 35R  
HIRL Rws 17R-35L and 17L-35R

SW-4, 11 JUL 2024 to 08 AUG 2024

SW-4, 11 JUL 2024 to 08 AUG 2024