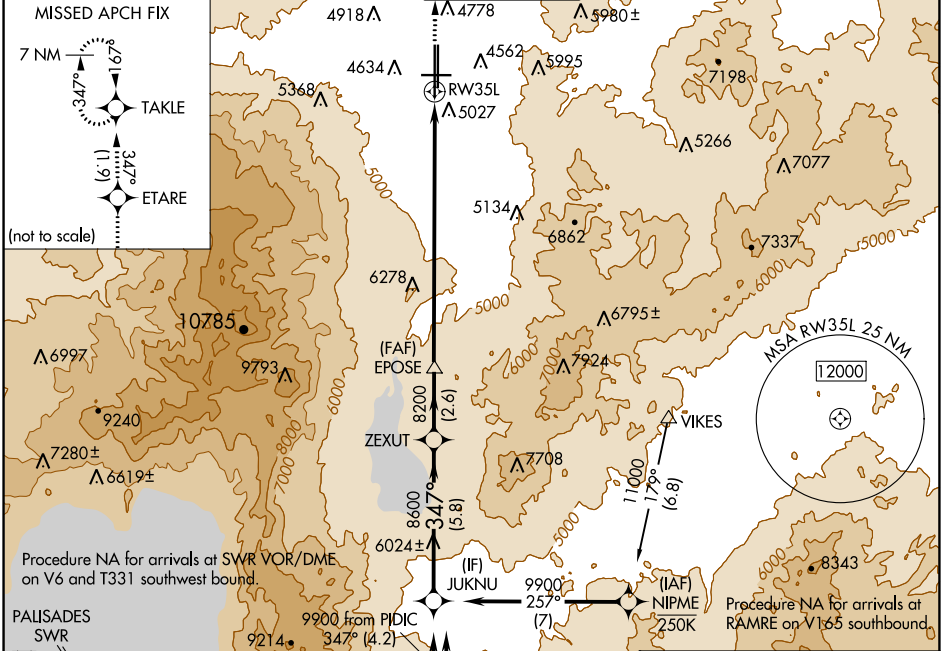


WAAS CH 82609 W35A	APP CRS 347°	Rwy ldg 10011 TDZE 4410 Apt Elev 4415
--	------------------------	--

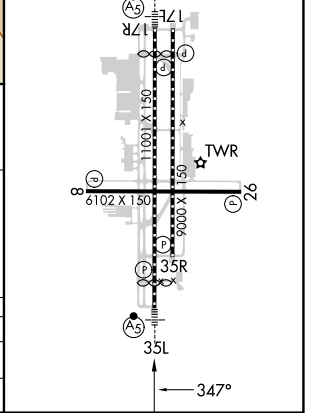
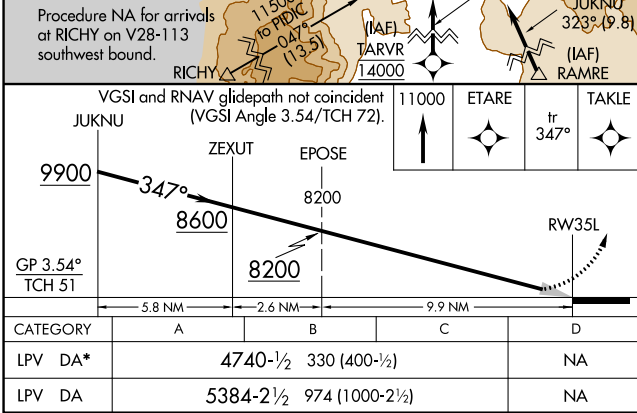
RNAV (GPS) Y RWY 35L

RENO/TAHOE INTL (RNO)

RNP APCH - GPS.	MALSR	MISSED APPROACH: Climb to 11000 direct ETARE and on track 347° to TAKLE and hold, continue climb-in-hold to 11000. *Missed approach requires minimum climb to 260 feet per NM to 6860.			
<p>For inop ALS increase LPV all Cats visibility to 3 SM.</p>					
D-ATIS 135.8 363.0	NORCAL APP CON 119.2 279.55 126.3 353.9	RENO TOWER 118.7 257.8	GND CON 121.9 348.6	CLNC DEL 124.9 370.85	CPDLC



ELEV 4415	D TDZE 4410
HIRL Rwy 17R-35L and 17L-35R	
REIL Rwy 8, 17L, 26, and 35R	
MIRL Rwy 8-26	



SW-4, 11 JUL 2024 to 08 AUG 2024

SW-4, 11 JUL 2024 to 08 AUG 2024