

LOC/DME I-SZK <b>111.1</b> Chan <b>48</b>	APP CRS <b>072°</b>	Rwy Idg <b>6800</b> TDZE <b>1175</b> Apt Elev <b>1175</b>
---	------------------------	---

# LDA Y RWY 6

ROANOKE/BLACKSBURG RGNL (WOODRUM FLD) (R.O.A)

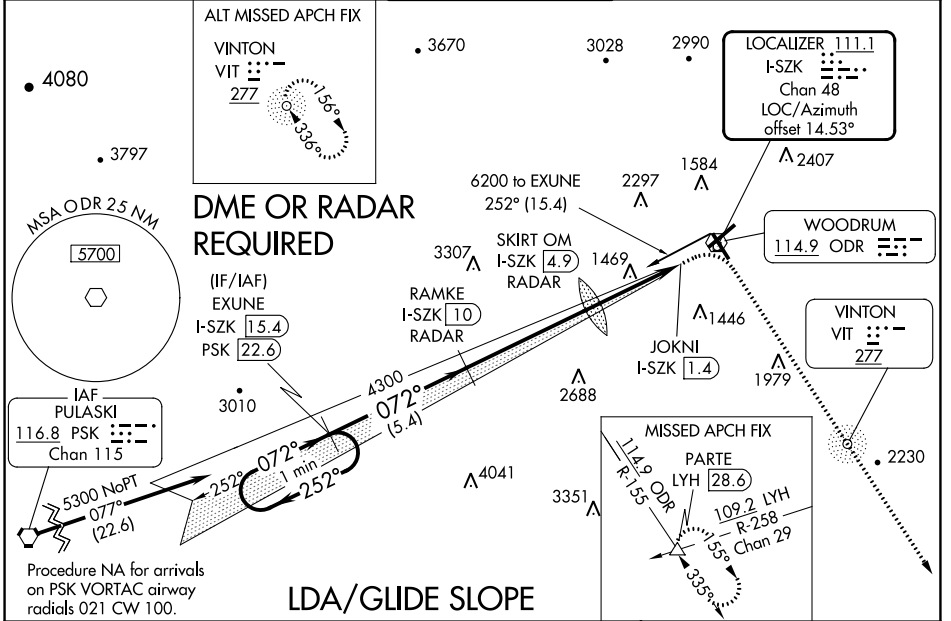
**⚠** Inop table does not apply to S-LDA 6 Cats C and D. Circling NA NW of Rwy 6-24. For inop MALSR, increase S-LDA/GS 6 all Cats visibility to 1½.

**⚠** -13° C

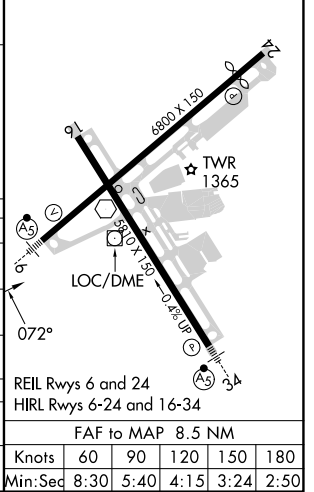
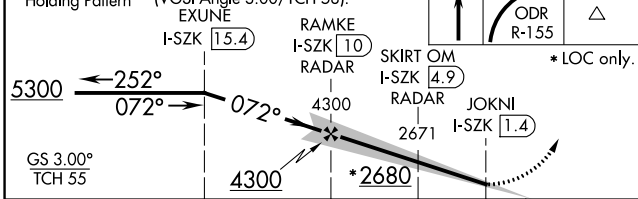
MALSR

MISSED APPROACH: Climb to 1800 then climbing right turn to 5000 on ODR VOR R-155 to PARTE INT/LYH 28.6 DME and hold, continue climb-in-hold to 5000.

ATIS <b>132.375</b>	ROANOKE APP CON <b>126.9 339.8</b>	ROANOKE TOWER <b>118.3 257.8</b>	GND CON <b>121.9 257.8</b>	CLNC DEL <b>119.7</b>
------------------------	---------------------------------------	-------------------------------------	-------------------------------	--------------------------



One Minute Holding Pattern	VGSI and LDA glidepath not coincident (VGSI Angle 3.00/TCH 58). EXUNE I-SZK <b>15.4</b>	1800	5000	PARTE	ELEV 1175	<b>D</b> TDZE 1175
----------------------------	--	------	------	-------	-----------	--------------------



CATEGORY	A	B	C	D												
S-LDA/GS 6	1615-1½		440 (500-1½)													
S-LDA 6	2680-1	1505 (1600-1)	2680-3	1505 (1600-3)												
<b>C</b> CIRCLING	2680-1½ 1505 (1600-1½)	2680-1½ 1505 (1600-1½)	2680-3 1505 (1600-3)	2800-3 1625 (1700-3)												
SKIRT OM/DME/RADAR																
S-LDA 6	1720-1	545 (600-1)	1720-1½	545 (600-1½)												
<b>C</b> CIRCLING	1720-1½	545 (600-1½)	2420-3 1245 (1300-3)	2800-3 1625 (1700-3)												
<table border="1"> <tr> <td>Knots</td> <td>60</td> <td>90</td> <td>120</td> <td>150</td> <td>180</td> </tr> <tr> <td>Min:Sec</td> <td>8:30</td> <td>5:40</td> <td>4:15</td> <td>3:24</td> <td>2:50</td> </tr> </table>					Knots	60	90	120	150	180	Min:Sec	8:30	5:40	4:15	3:24	2:50
Knots	60	90	120	150	180											
Min:Sec	8:30	5:40	4:15	3:24	2:50											

# LDA Y RWY 6

NE-3, 11 JUL 2024 to 08 AUG 2024

NE-3, 11 JUL 2024 to 08 AUG 2024