

APP CRS	Rwy Idg	<b>6010</b>
<b>238°</b>	TDZE	<b>1170</b>
	Apt Elev	<b>1175</b>

# RNAV (RNP) Z RWY 24

ROANOKE/BLACKSBURG RGNL (WOODRUM FLD) (R.O.A)

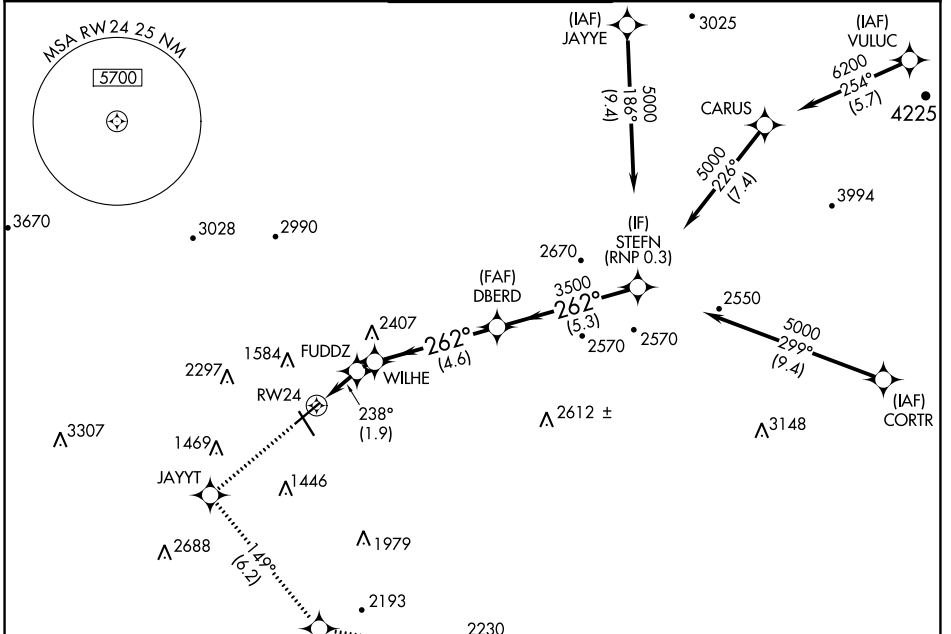
RNP AR APCH - GPS.

**▼** For uncompensated Baro-VNAV systems, procedure NA below -14°C or above 54°C.

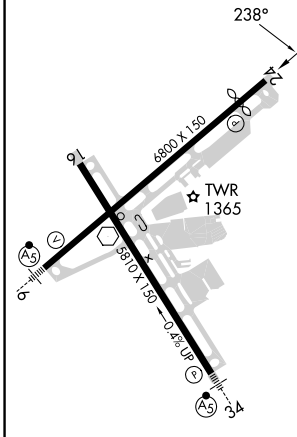
**⚠** -13°C

MISSED APPROACH: Climb to 4000 direct JAYYT and on track 149° to TPUCK and on track 107° to MONAT and hold. # Missed approach requires minimum climb of 230 feet per NM to 3200.

ATIS	ROANOKE APP CON	ROANOKE TOWER	GND CON	CLNC DEL
<b>132.375</b>	<b>126.9 339.8</b>	<b>118.3 257.8</b>	<b>121.9 257.8</b>	<b>119.7</b>



ELEV 1175	<b>D</b>	TDZE 1170
-----------	----------	-----------



4000	JAYYT	tr 149°	TPUCK	tr 107°	MONAT
	FUDDZ	1815	WILHE	2045	3500
			DBERD	3500	STEFN
					5000
					GP 3.00 TCH 55
CATEGORY	A	B	C	D	
# RNP 0.15 DA		1491-1	321 (400-1)		
RNP 0.30 DA		1633-1 1/8	463 (500-1 1/8)		

REIL Rws 6 and 24  
HIRL Rws 6-24 and 16-34

## AUTHORIZATION REQUIRED

# RNAV (RNP) Z RWY 24

NE-3, 11 JUL 2024 to 08 AUG 2024

NE-3, 11 JUL 2024 to 08 AUG 2024