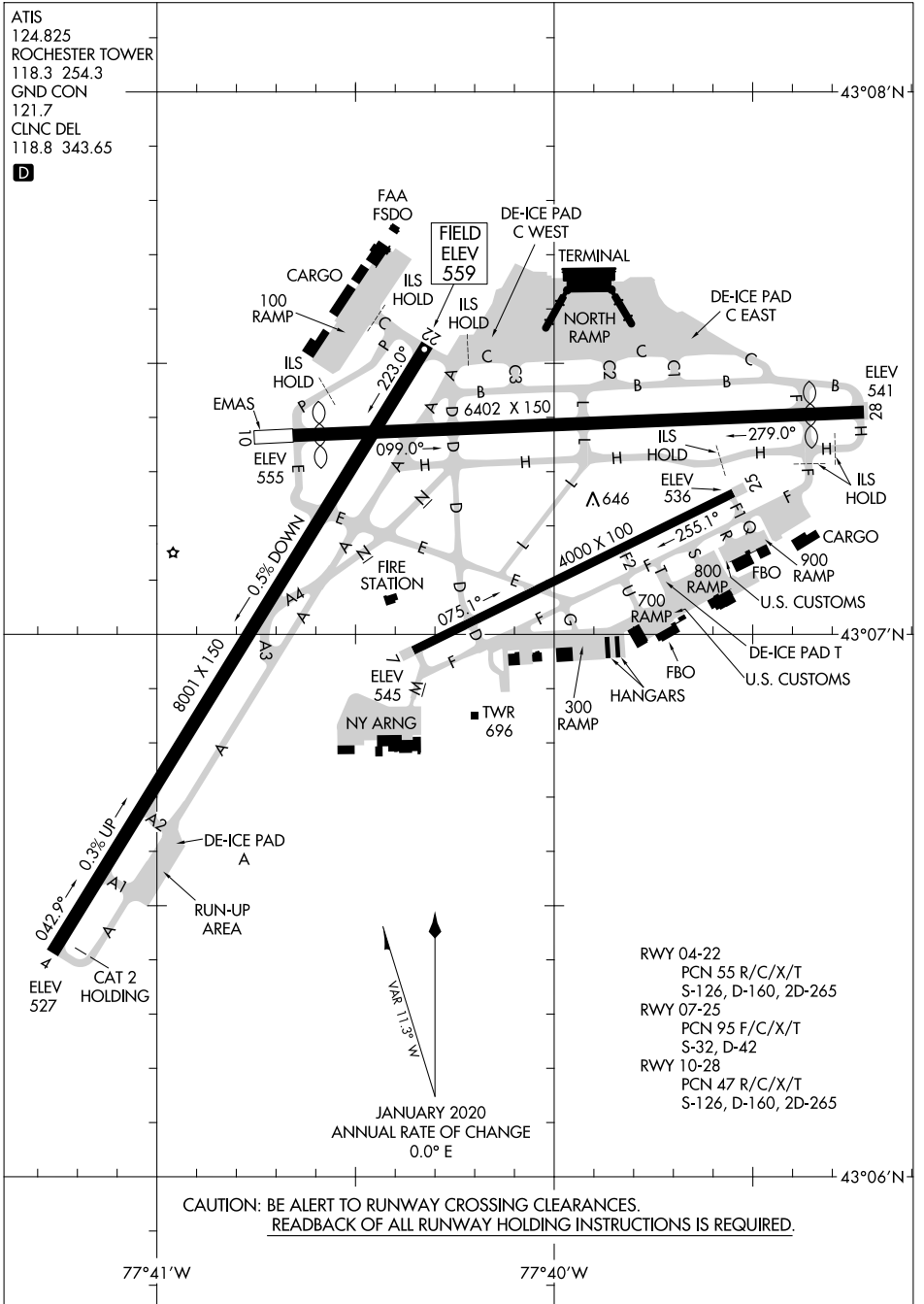


ATIS  
 124.825  
 ROCHESTER TOWER  
 118.3 254.3  
 GND CON  
 121.7  
 CLNC DEL  
 118.8 343.65



NE-2, 11 JUL 2024 to 08 AUG 2024

NE-2, 11 JUL 2024 to 08 AUG 2024



CAUTION: BE ALERT TO RUNWAY CROSSING CLEARANCES.  
READBACK OF ALL RUNWAY HOLDING INSTRUCTIONS IS REQUIRED.

JANUARY 2020  
 ANNUAL RATE OF CHANGE  
 0.0° E