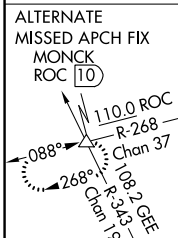
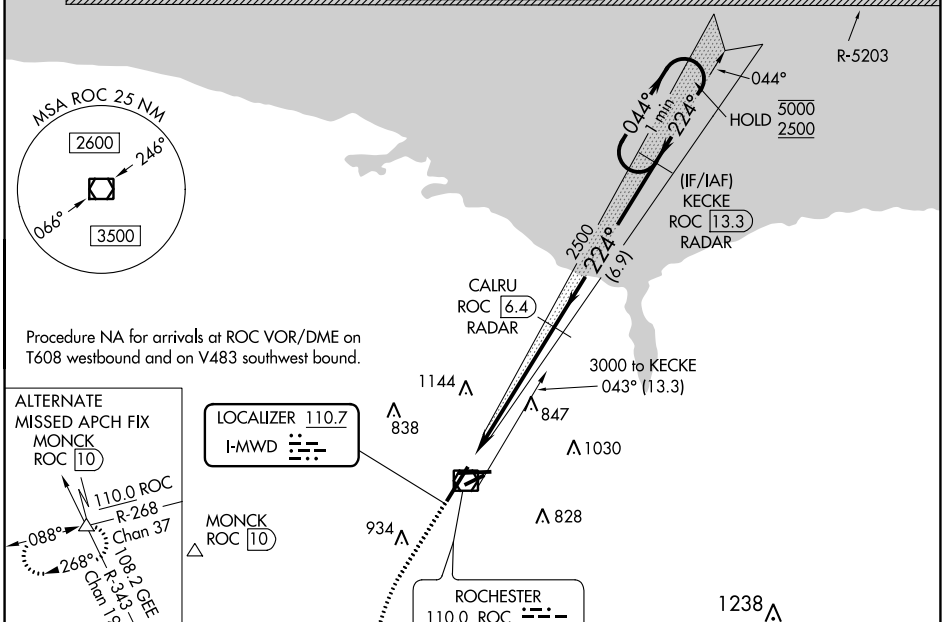


LOC I-MWD 110.7	APP CRS 224°	Rwy Idg 8001
		TDZE 559
		Apt Elev 559

ILS or LOC RWY 22

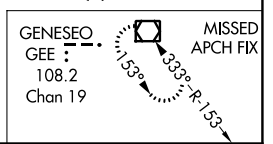
FREDERICK DOUGLASS/GREATER ROCHESTER INTL (ROC)

DME or RADAR required.		MALSR		MISSED APPROACH: Climb to 1000 then climbing left turn to 4000 direct GEE VOR/DME and hold.	
<p>▼ When R-5203 active hold in lieu NA. DME from ROC VOR/DME.</p> <p>▲ DME use requires simultaneous reception of I-MWD and ROC DME.</p> <p>* RVR 1800 authorized with use of FD or AP or HUD to DA.</p>					
ATIS 124.825	ROCHESTER APP CON 119.55 269.6	ROCHESTER TOWER 118.3 254.3	GND CON 121.7	CLNC DEL 118.8 343.65	

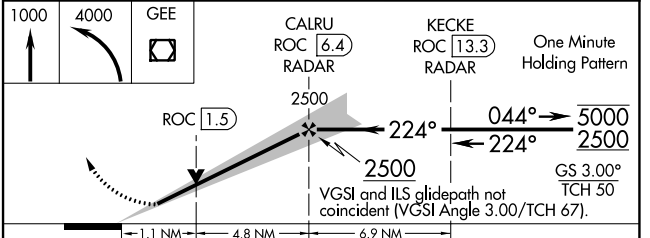


LOCALIZER 110.7
I-MWD

MONCK ROC 10



ELEV 559	D	TDZE 559			
<p>224°</p>					
<p>TDZ/CL Rwy 4 REIL Rws 7, 10 and 25 MIRL Rwy 7-25 HIRL Rws 4-22 and 10-28</p>					
FAF to MAP 5.9 NM					
Knots	60	90	120	150	180
Min:Sec	5:54	3:56	2:57	2:22	1:58



CATEGORY	A	B	C	D
S-ILS 22 *	759/24 200 (200-1/2)			
S-LOC 22	980/24	421 (500-1/2)	980/40	421 (500-3/4)
CIRCLING	1060-1 501 (600-1)		1460-2 3/4	1460-3
			901 (1000-2 3/4)	901 (1000-3)

NE-2, 11 JUL 2024 to 08 AUG 2024

NE-2, 11 JUL 2024 to 08 AUG 2024