

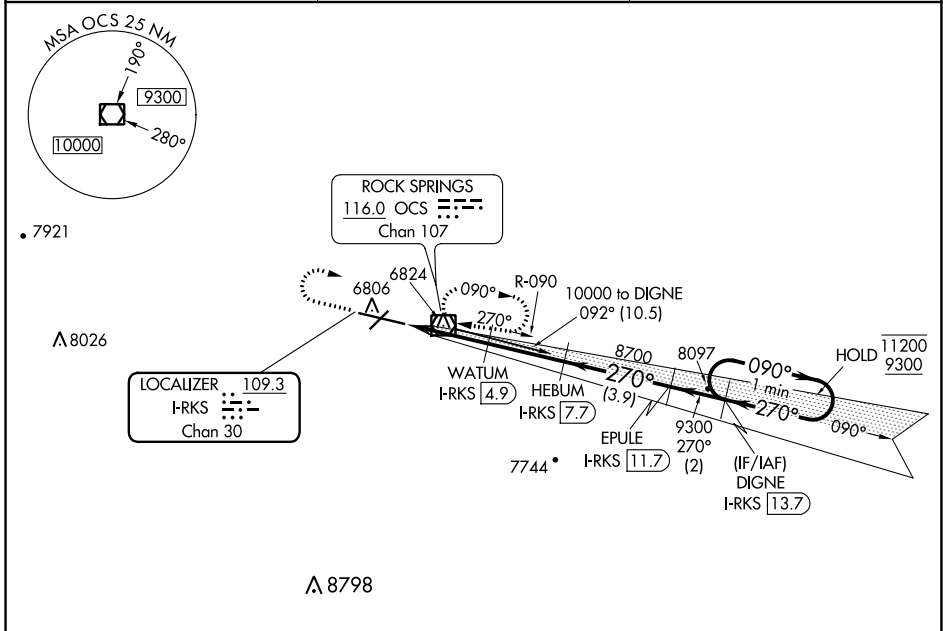
LOC/DME I-RKS 109.3 Chan 30	APP CRS 270°	Rwy Idg TDZE Apt Elev	10000 6765 6765
--	------------------------	-----------------------------	--

ILS or LOC RWY 27

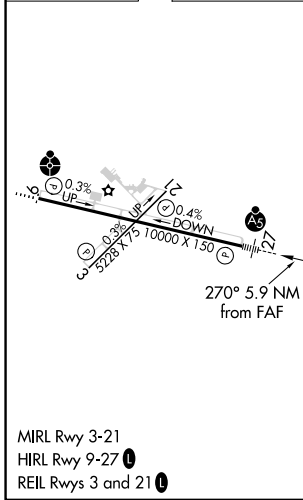
SOUTHWEST WYOMING RGNL (R.KS)

DME required.	MALSR	MISSED APPROACH: Climb to 7600 then climbing right turn to 9300 direct OCS VOR/DME and hold, continue climb-in-hold to 9300.
---------------	-------	--

ASOS 118.375	SALT LAKE CENTER 124.35 353.5	UNICOM 122.8 (CTAF) 0
------------------------	---	---------------------------------



ELEV 6765	D	TDZE 6765
-----------	----------	-----------



7600	9300	OCS	Use I-RKS DME when on the localizer course.				
*LOC only.			HEBUM I-RKS 7.7	EPULE I-RKS 11.7	DIGNE I-RKS 13.7	One Minute Holding Pattern	
			WATUM I-RKS 4.9				
			I-RKS 1.8	I-RKS 2.7			
						GS 3.00° TCH 55	
			0.9	2.2 NM	2.8 NM	3.9 NM	2 NM
CATEGORY	A	B	C	D			
S-ILS-27		6965-1/2	200 (200-1/2)				
S-LOC 27		7100-1/2	335 (400-1/2)				
C CIRCLING	7140-1 375 (400-1)	7220-1 455 (500-1)	7220-1 1/2 455 (500-1 1/2)	7540-2 1/2 775 (800-2 1/2)			

NW-1, 11 JUL 2024 to 08 AUG 2024

NW-1, 11 JUL 2024 to 08 AUG 2024