

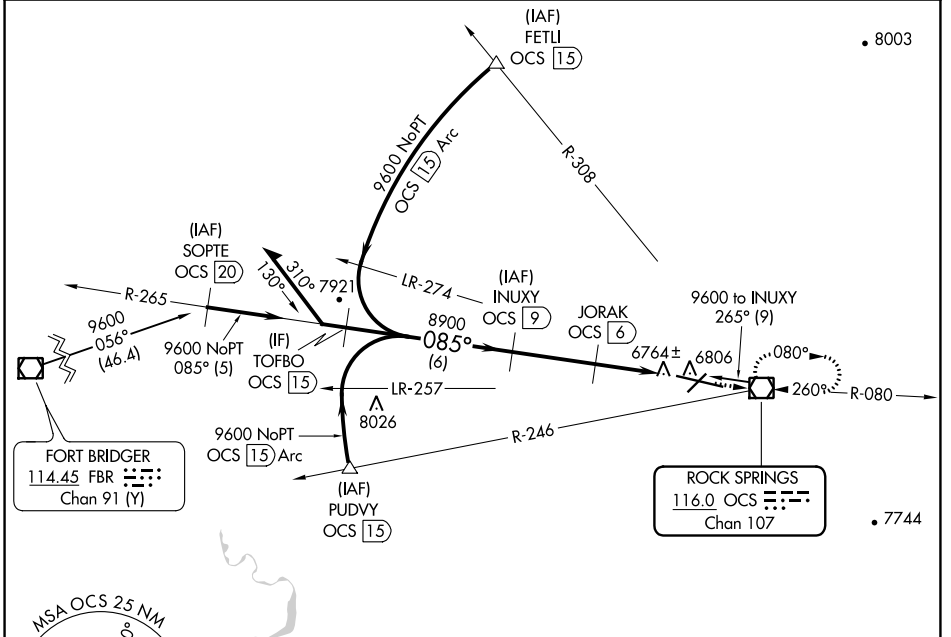
VOR/DME OCS 116.0 Chan 107	APP CRS 085°	Rwy Idg 10000 TDZE 6741 Apt Elev 6765
--	------------------------	--

VOR RWY 9

SOUTHWEST WYOMING RGNL (R.K.S)

DME required.	ODALS	MISSED APPROACH: Climb to 9300 direct OCS VOR/DME and hold, continue climb-in-hold to 9300.
---------------	-------	--

ASOS 118.375	SALT LAKE CENTER 124.35 353.5	UNICOM 122.8 (CTAF)
------------------------	---	-------------------------------

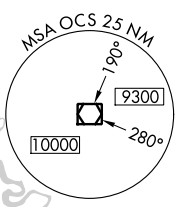


NW-1, 11 JUL 2024 to 08 AUG 2024

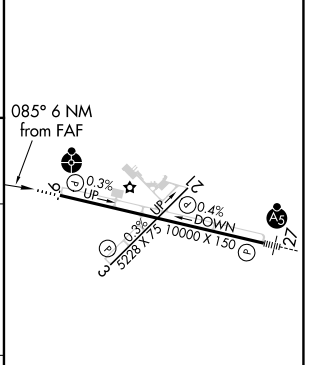
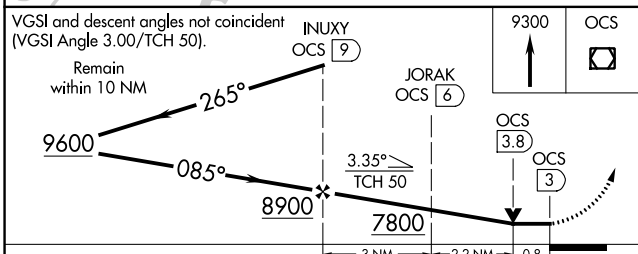
NW-1, 11 JUL 2024 to 08 AUG 2024

FORT BRIDGER
114.45 FBR
Chan 91 (Y)

ROCK SPRINGS
116.0 OCS
Chan 107



8798 A	ELEV 6765	TDZE 6741
--------	-----------	-----------



CATEGORY	A	B	C	D
S-9	7020- ³ / ₄ 279 (300- ³ / ₄)			7020-1 279 (300-1)
CIRCLING	7140-1 375 (400-1)	7220-1 455 (500-1)	7220-1 ¹ / ₂ 455 (500-1 ¹ / ₂)	7540-2 ¹ / ₂ 775 (800-2 ¹ / ₂)

MIRL Rwy 3-21
HIRL Rwy 9-27
REIL Rws 3 and 21