

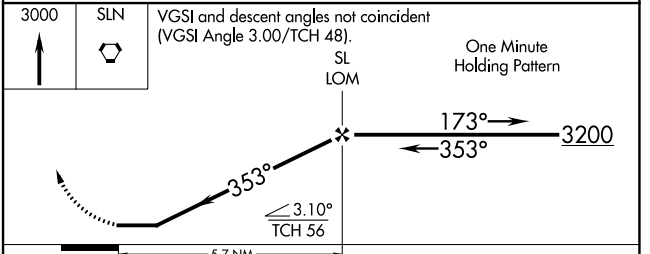
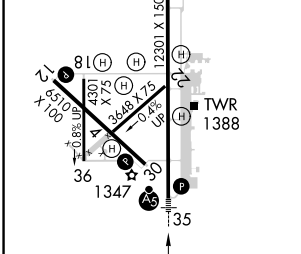
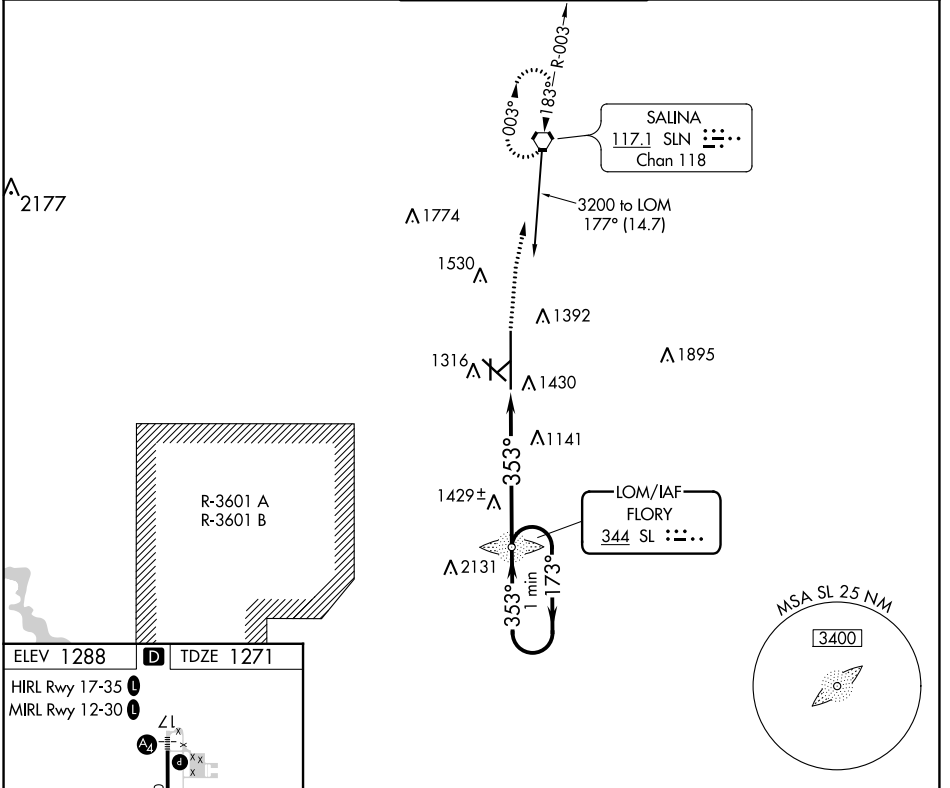
LOM SL 344	APP CRS 353°	Rwy Idg TDZE Apt Elev 12300 1271 1288
----------------------	------------------------	---

NDB RWY 35

SALINA RGNL (SLN)

<p>▼ Cat D Circling NA southwest of runway 12-30. For inop ALS, increase S-35 Cats A/B visibility to 1 SM and Cats C/D to 1½ SM.</p>	<p>MALSR</p>	<p>MISSED APPROACH: Climb to 3000 direct SLN VORTAC and hold.</p>
---	--------------	---

ATIS 120.15	KANSAS CITY CENTER 134.9 363.2	SALINA TOWER ★ 119.3 (CTAF) 257.7	GND CON 121.9 360.8	UNICOM 122.95
-----------------------	--	---	-------------------------------	-------------------------



FAF to MAP 5.7 NM					
Knots	60	90	120	150	180
Min:Sec	5:42	3:48	2:51	2:17	1:54
CATEGORY	A		B		D
S-35	1760-¾ 489 (500-¾)		1760-1 489 (500-1)		1760-1¼ 489 (500-1¼)
CIRCLING	1820-1 532 (600-1)		1840-1 552 (600-1)		1860-1½ 572 (600-1½)
					1860-2 572 (600-2)

NC-2, 11 JUL 2024 to 08 AUG 2024

NC-2, 11 JUL 2024 to 08 AUG 2024