

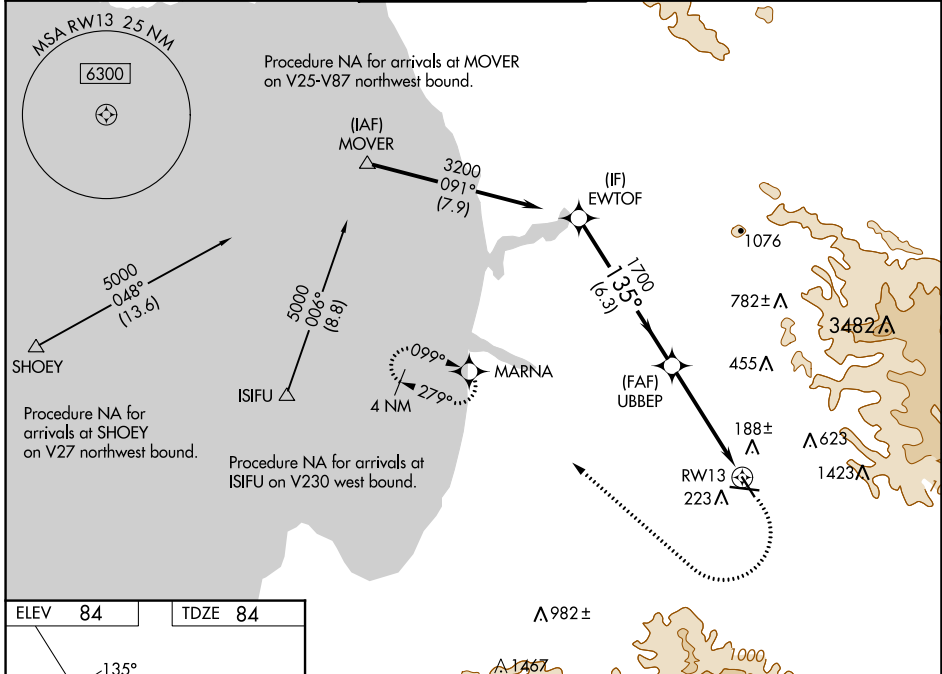
WAAS CH 57944 W13A	APP CRS 135°	Rwy Idg 4825 TDZE 84 Apt Elev 84
--	------------------------	---

RNAV (GPS) RWY 13

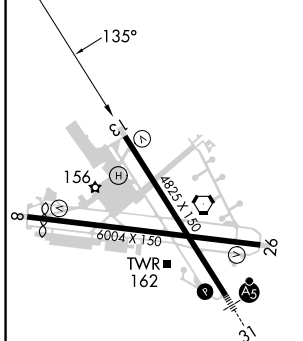
SALINAS MUNI (SNS)

RNP APCH - GPS.	MISSED APPROACH: (Do not exceed 185K until MARNNA). Climb to 600, then climbing right turn to 3000 direct MARNNA and hold, continue climb-in-hold to 3000.
<p>▼ Rwy 13 helicopter visibility reduction below $\frac{3}{4}$ SM NA. For uncompensated Baro-VNAV systems, LNAV/VNAV NA below 1°C or above 54°C. Circling NA for Cat C northeast of Rwy 13 and north of Rwy 26. Circling NA for Cat D northeast of Rwy 13-31.</p>	

ATIS 124.85	NORCAL APP CON 133.0 251.15	SALINAS TOWER * 119.525 (CTAF) 0 239.3	GND CON 121.7	UNICOM 123.0
-----------------------	---------------------------------------	--	-------------------------	------------------------



ELEV 84	TDZE 84
---------	---------



- HIRL Rwy 13-31
- MIRL Rwy 8-26
- REIL Rwy 13 and 26

EWTOF	3200	1700	600	3000	MARNNA
	1700		1.4 NM to RWY 13		
GP 3.12°		TCH 50			
6.3 NM		3.3 NM		1.4 NM	
CATEGORY	A	B	C	D	
LPV DA	334- $\frac{3}{4}$ 250 (300- $\frac{3}{4}$)				
LNAV/VNAV DA	447-1	363 (400-1)	463-1	379 (400-1)	488-1 $\frac{1}{8}$ 404 (500-1 $\frac{1}{8}$)
LNAV MDA	580-1	496 (500-1)	580-1 $\frac{3}{8}$	496 (500-1 $\frac{3}{8}$)	
C CIRCLING	580-1	496 (500-1)	800-2	716 (800-2)	1620-3 1536 (1600-3)

SW-2, 11 JUL 2024 to 08 AUG 2024

SW-2, 11 JUL 2024 to 08 AUG 2024