

APP CRS	Rwy Idg	5608
084°	TDZE	76
	Apt Elev	84

RNAV (GPS) RWY 8

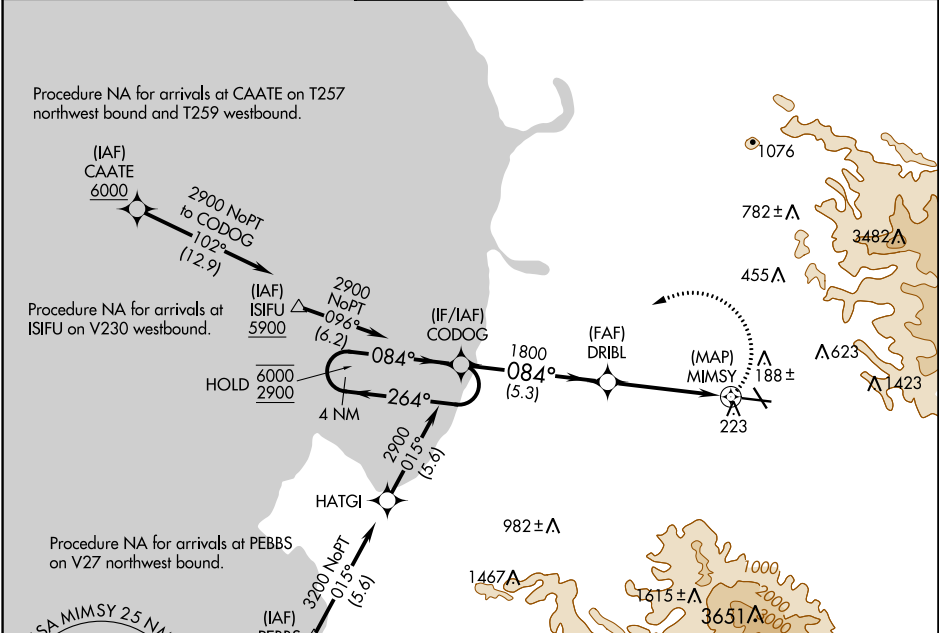
SALINAS MUNI (SNS)

RNP APCH-GPS.

⚠ Circling Cat C/D NA northeast of Rwy 13 and north of Rwy 26.

MISSED APPROACH: (Do not exceed 185K until CODOG)
Climbing left turn to 2900 direct CODOG and hold, continue climb-in-hold to 2900.

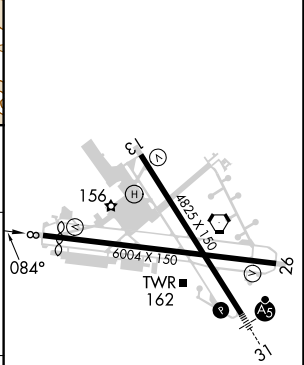
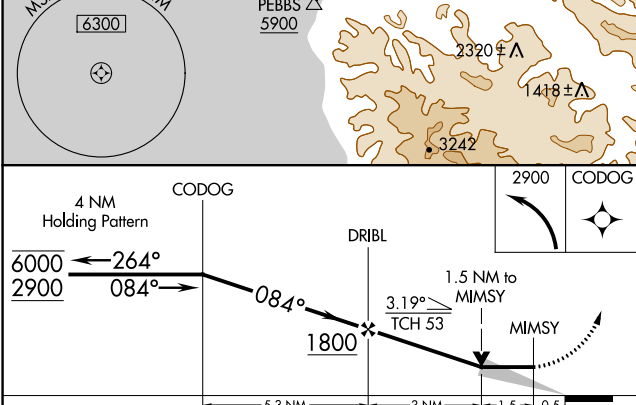
ATIS 124.85	NORCAL APP CON 133.0 251.15	SALINAS TOWER * 119.525 (CTAF) 239.3	GND CON 121.7	UNICOM 123.0
-----------------------	---------------------------------------	--	-------------------------	------------------------



SW-2, 11 JUL 2024 to 08 AUG 2024

SW-2, 11 JUL 2024 to 08 AUG 2024

ELEV 84	TDZE 76
---------	---------



CATEGORY	A	B	C	D
LNNAV MDA	760-1	684 (700-1)	760-2	684 (700-2)
C CIRCLING	760-1	676 (700-1)	800-2 716 (800-2)	1680-3 1596 (1600-3)

HIRL Rwy 13-31 **Ⓛ**

MIRL Rwy 8-26 **Ⓛ**

REIL Rws 13 and 26 **Ⓛ**