


APP CRS	Rwy Idg	<b>4825</b>
<b>315°</b>	TDZE	<b>82</b>
	Apt Elev	<b>84</b>

# RNAV (GPS) Y RWY 31

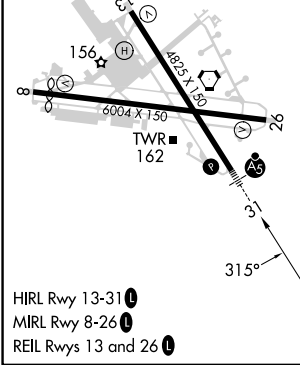
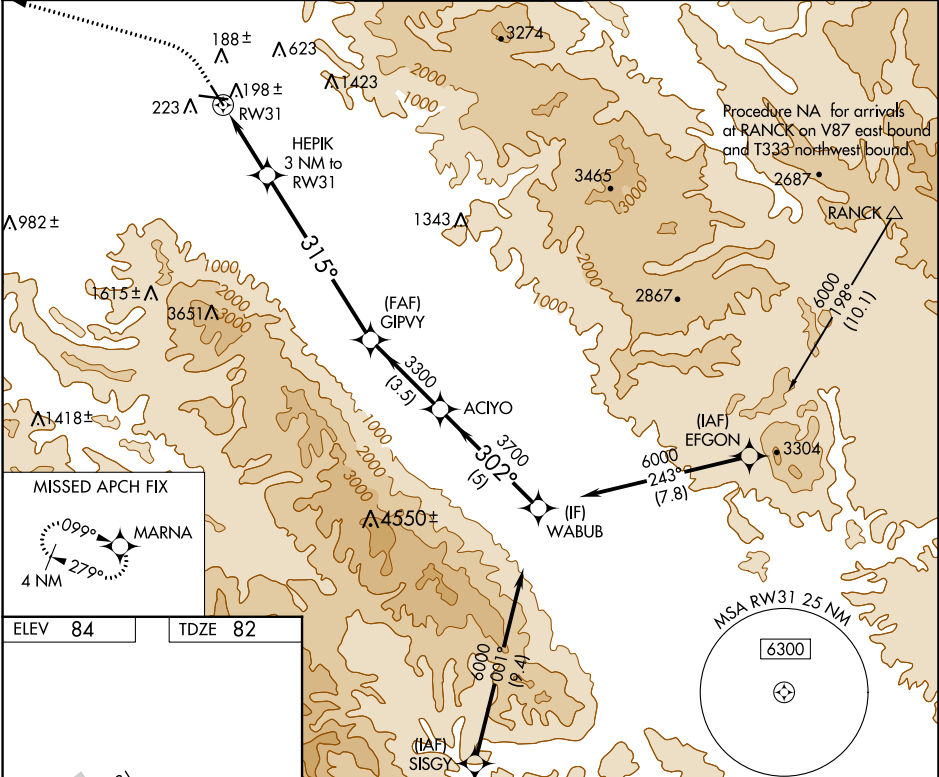
SALINAS MUNI (SNS)



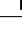


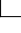

RNP APCH - GPS.

**⚠** Circling NA for Cat C northeast of Rwy 13 and north of Rwy 26. Circling NA for Cat D northeast of Rwy 13-31.

**MALS**  MISSED APPROACH: Climb to 600, then climbing left turn to 3000 direct MARNA and hold, continue climb-in-hold to 3000.

ATIS <b>124.85</b>	NORCAL APP CON <b>133.0 251.15</b>	SALINAS TOWER * <b>119.525 (CTAF) 0 239.3</b>	GND CON <b>121.7</b>	UNICOM <b>123.0</b>
-----------------------	---------------------------------------	--	-------------------------	------------------------



 600  3000  MARN A  VGS I and descent angles not coincident (VGS I Angle 3.00/TCH 59).  WABUB	 HEPIK 3 NM to RW31 $\leq 3.00^\circ$ TCH 50		ACIYO 3700 3.5 NM		WABUB 6000 5 NM	
	1 NM to RW31 1080 315°		GIPVY 3300 3.0 NM		302° 6000	
CATEGORY A B C D	LN A V MDA 460/24 378 (400-½)		460/35 378 (400-¾)		800-2 1620-3 716 (800-2) 1536 (1600-3)	
 CIRCLING	540-1 456 (500-1)		800-2 1620-3 716 (800-2) 1536 (1600-3)		800-2 1620-3 716 (800-2) 1536 (1600-3)	

SW-2, 11 JUL 2024 to 08 AUG 2024

SW-2, 11 JUL 2024 to 08 AUG 2024