


WAAS CH <b>82338</b> <b>W17A</b>	APP CRS <b>169°</b>	Rwy Idg TDZE Apt Elev	<b>9596</b> <b>4219</b> <b>4227</b>
--	------------------------	-----------------------------	---

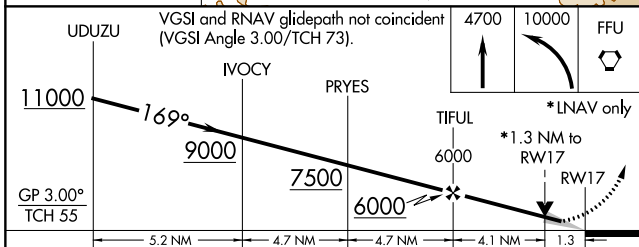
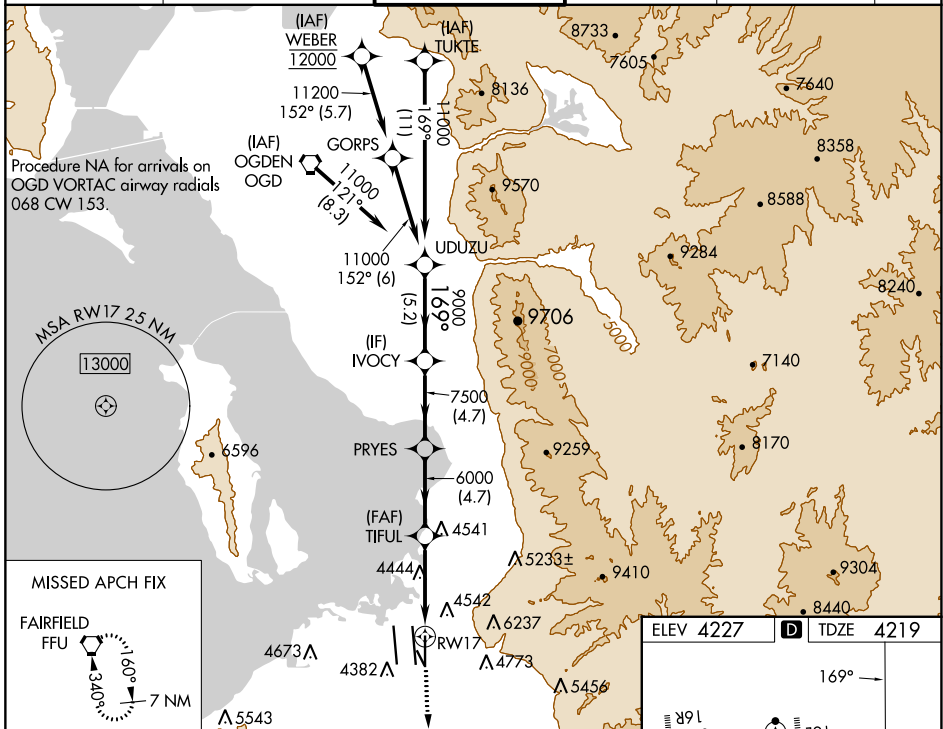
# RNAV (GPS) RWY 17

SALT LAKE CITY INTL (SLC)

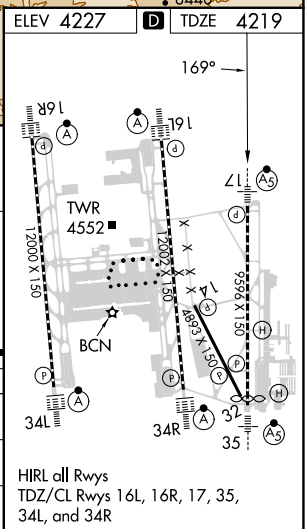
**▼** For uncompensated Baro-VNAV systems, LNAV/VNAV NA below -14°C (7°F) or above 49°C (121°F). DME/DME RNP-0.3 NA. For inop ALS, increase LPV Cat E visibility to RVR 4000, LNAV/VNAV Cat E visibility to RVR 6000, and LNAV Cat C/D/E visibility to 1½ SM. Simultaneous approach authorized. LNAV procedure NA during simultaneous operations. Use of FD or AP providing RNAV track guidance required during simultaneous operations.

**MALS R**  
 MISSED APPROACH: Climb to 4700 then climbing left turn to 10000 direct FFU VORTAC and hold.

D-ATIS <b>124.75 125.625</b>	SALT LAKE CITY APP CON <b>125.7 284.6</b>	SALT LAKE CITY TOWER <b>118.3 257.8</b>	GND CON <b>121.9 348.6</b>	CLNC DEL <b>127.3 379.975</b>	CPDLC
---------------------------------	--	--	-------------------------------	----------------------------------	-------



CATEGORY	A	B	C	D	E
LPV DA		4419/18	200 (200-½)		
LNAV/VNAV DA		4571/30	352 (400-¾)		
LNAV MDA	4700/24	481 (500-½)		4700/50	481 (500-1)



SW-4, 11 JUL 2024 to 08 AUG 2024

SW-4, 11 JUL 2024 to 08 AUG 2024