

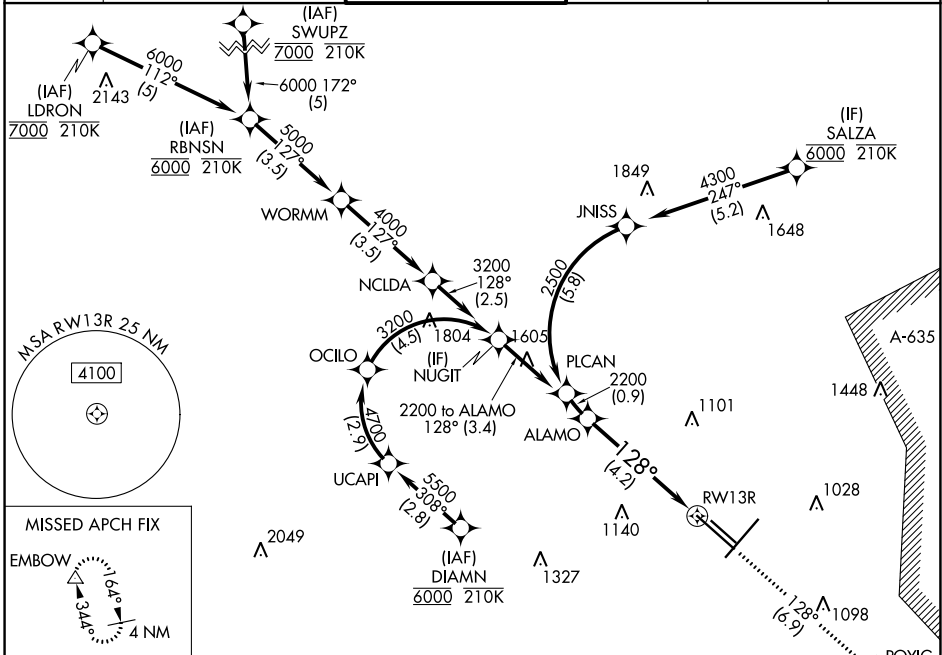
RNAV (RNP) Z RWY 13R

SAN ANTONIO INTL (SAT)

APP CRS 128°	Rwy Idg 8502
	TDZE 809
	Apt Elev 809

RNP AR APCH - GPS		ALSIF-2	MISSED APPROACH: (Do not exceed 210K until POYIG) Climb to 3100 on track 128° to POYIG and track 171° to EMBOW and hold.		
<p>▼ For uncompensated Baro-VNAV systems, procedure NA below -5°C or above 54°C. For inop ALS, increase RNP 0.3 all Cats visibility to RVR 6000.</p>					

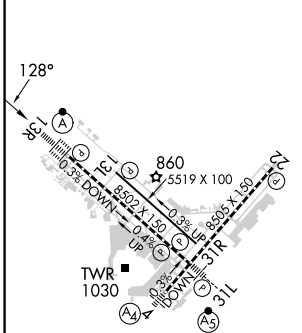
D-ATIS 118.9	SAN ANTONIO APP CON 125.1 307.0	SAN ANTONIO TOWER 119.8 257.8	GND CON 121.9 348.6	CLNC DEL 126.7	CPDLC
------------------------	---	---	-------------------------------	--------------------------	-------



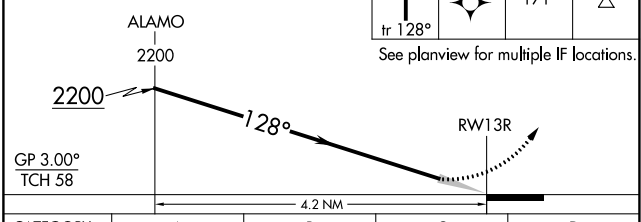
SC-3, 11 JUL 2024 to 08 AUG 2024

SC-3, 11 JUL 2024 to 08 AUG 2024

ELEV 809	D	TDZE 809
----------	----------	----------



VGSI and RNAV glidepath not coincident (VGSI Angle 3.00/TCH 75).



CATEGORY	A	B	C	D
RNP 0.15 DA		1137/26	328 (400-½)	
RNP 0.30 DA		1218/40	409 (500-¾)	

TDZ/CL Rwy 13R
REIL Rwy 13L, 22 and 31R
HIRL Rwy 4-22 and 13R-31L
MIRL Rwy 13L-31R

AUTHORIZATION REQUIRED