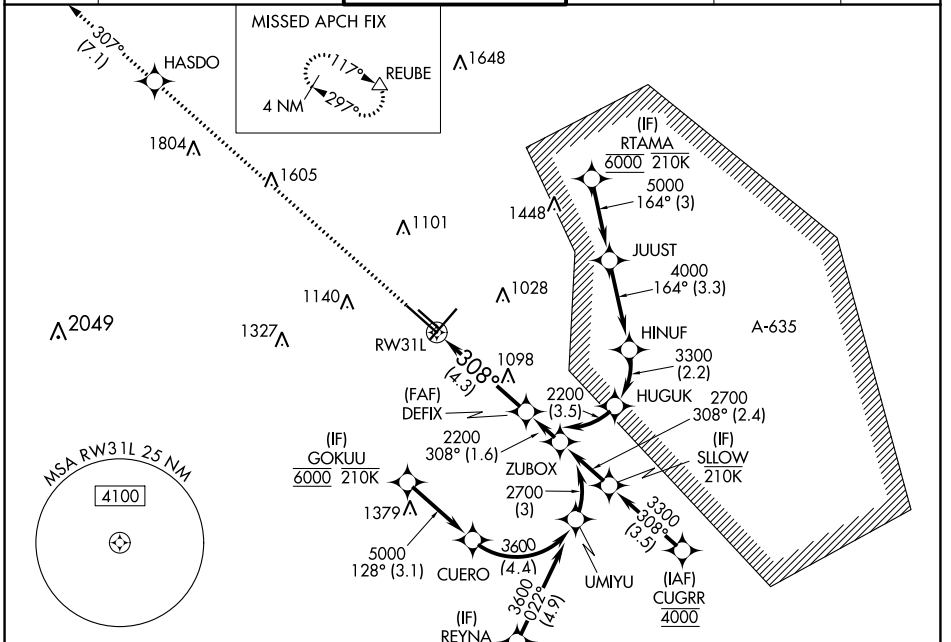


APP CRS	Rwy Idg	8502
308°	TDZE	790
	Apt Elev	809

RNAV (RNP) Z RWY 31L

SAN ANTONIO INTL (SAT)

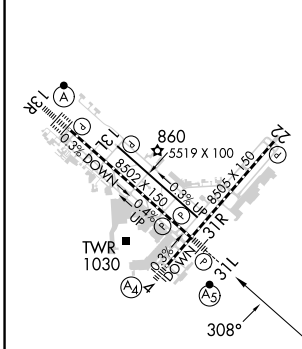
RNP AR APCH - GPS		MALSR		MISSED APPROACH: Climb to 4200 direct HASDO and track 307° to REUBE and hold.	
<p>▼ For uncompensated Baro-VNAV systems, procedure NA below -5°C or above 54°C. For inop ALS, increase RNP 0.15 all Cats visibility to RVR 5500, increase RNP 0.30 all Cats visibility to RVR 6000.</p>					
D-ATIS	SAN ANTONIO APP CON	SAN ANTONIO TOWER	GND CON	CLNC DEL	CPDLC
118.9	125.1 307.0	119.8 257.8	121.9 348.6	126.7	



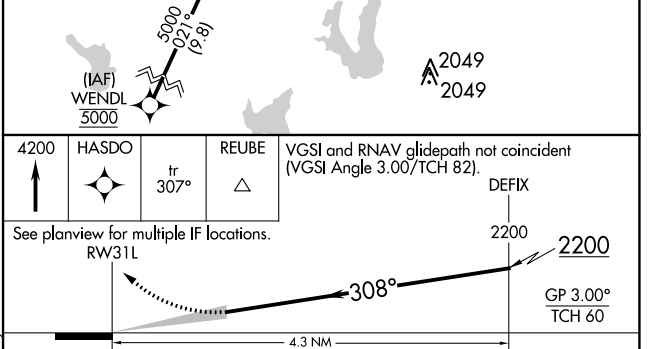
SC-3, 11 JUL 2024 to 08 AUG 2024

SC-3, 11 JUL 2024 to 08 AUG 2024

ELEV 809	D	TDZE 790
----------	----------	----------



TDZ/CL Rwy 13R
 REIL Rwy 13L, 22 and 31R
 HIRL Rwy 4-22 and 13R-31L
 MIRL Rwy 13L-31R



CATEGORY	A	B	C	D
RNP 0.15 DA		1144/30	354 (400-¾)	
RNP 0.30 DA		1200/40	410 (400-¾)	

AUTHORIZATION REQUIRED