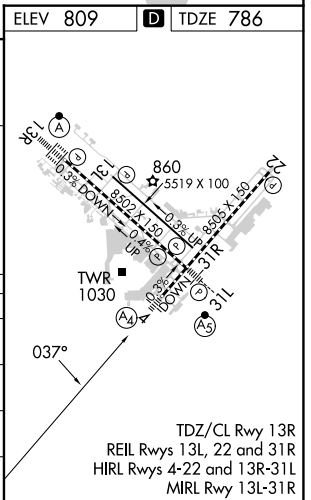
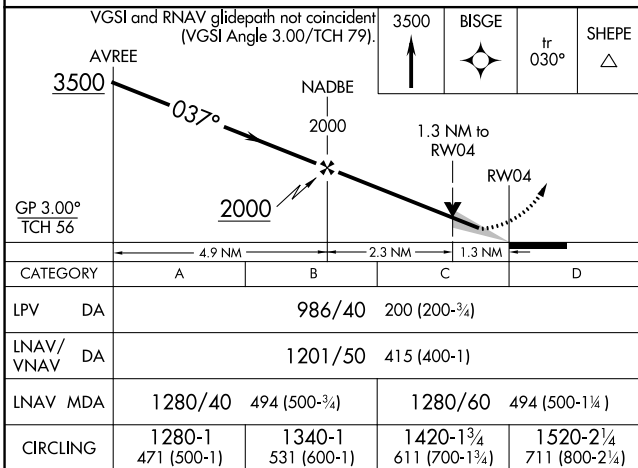
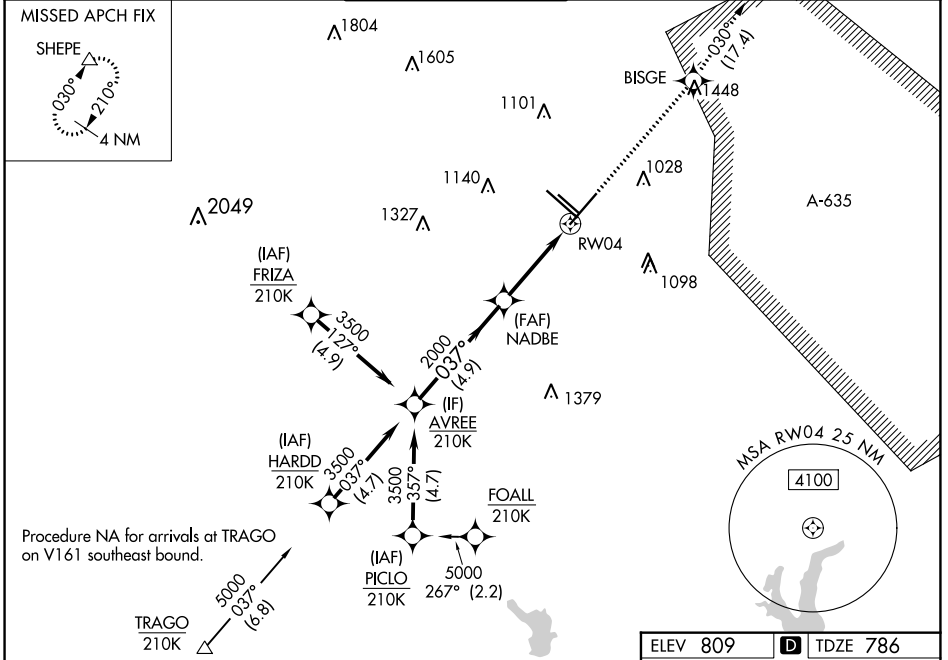


WAAS CH 77613 W04A	APP CRS 037°	Rwy Idg TDZE Apt Elev	8505 786 809
--	------------------------	-----------------------------	---

RNAV (GPS) Y RWY 4

SAN ANTONIO INTL (SAT)

RNP APCH - GPS.		MALS	MISSED APPROACH: Climb to 3500 direct BISGE and track 030° to SHEPE and hold.		
<p>▼ Circling NA northwest of Rws 4 and 13R. Inop table does not apply to LPV. For uncompensated Baro-VNAV systems, procedure NA below -5°C or above 54°C.</p> <p>▲ For inop ALS, increase LNAV/VNAV all Cats visibility to RVR 6000. Increase LNAV Cats A/B visibility to RVR 5500 and LNAV Cats C/D visibility to 1½ SM.</p>					
D-ATIS 118.9	SAN ANTONIO APP CON 125.1 307.0	SAN ANTONIO TOWER 119.8 257.8	GND CON 121.9 348.6	CLNC DEL 126.7	CPDLC



SC-3, 11 JUL 2024 to 08 AUG 2024

SC-3, 11 JUL 2024 to 08 AUG 2024