

# HI-TACAN Z RWY 36

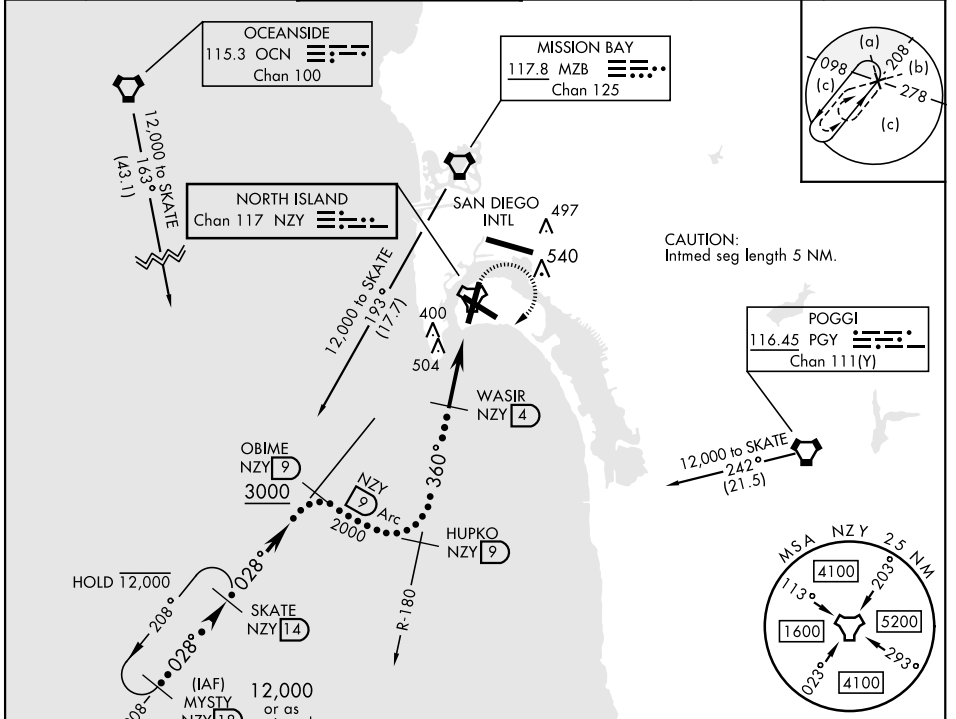
AL-374 [USN]

NORTH ISLAND NAS (HALSEY FIELD) (KNZY)

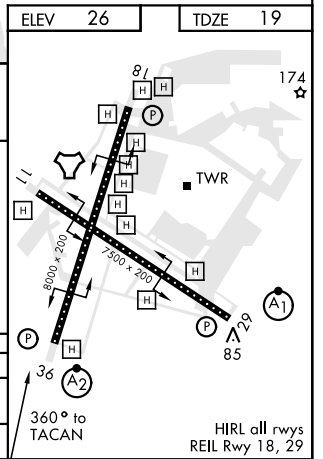
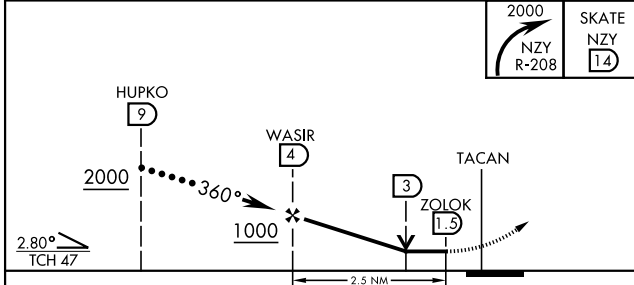
TACAN NZY Chan <b>117</b>	APCH CRS <b>360°</b>	Rwy ldg TDZE <b>19</b> Arprt Elev <b>26</b>
------------------------------	-------------------------	---

<p>▼ * When ALS inop, increase vis to 2 miles.</p>	<p>SALSF A2</p>	<p>MISSED APPROACH: Climbing right turn to 2000 intercept the NZY TACAN R-208 to SKATE and hold.</p>
--	---------------------	--

ATIS ★ <b>317.8</b>	SOCAL APP CON <b>125.15 317.55</b>	TOWER ★ <b>135.1 336.4</b>	GND CON <b>118.0 360.675</b>	CLNC DEL <b>128.4 288.25</b>	PAR/ASR
------------------------	---------------------------------------	-------------------------------	---------------------------------	---------------------------------	---------



ELEV 26	TDZE 19
---------	---------



CATEGORY	C	D	E
S-36 *	760-1 7/8 741 (800-1 7/8)		
CIRCLING	NOT AUTHORIZED		

SAN DIEGO, CALIFORNIA 32°42'N-117°13'W NORTH ISLAND NAS (HALSEY FIELD) (KNZY)

Amdt 4 05NOV20

# HI-TACAN Z RWY 36

SW-3, 11 JUL 2024 to 08 AUG 2024

SW-3, 11 JUL 2024 to 08 AUG 2024