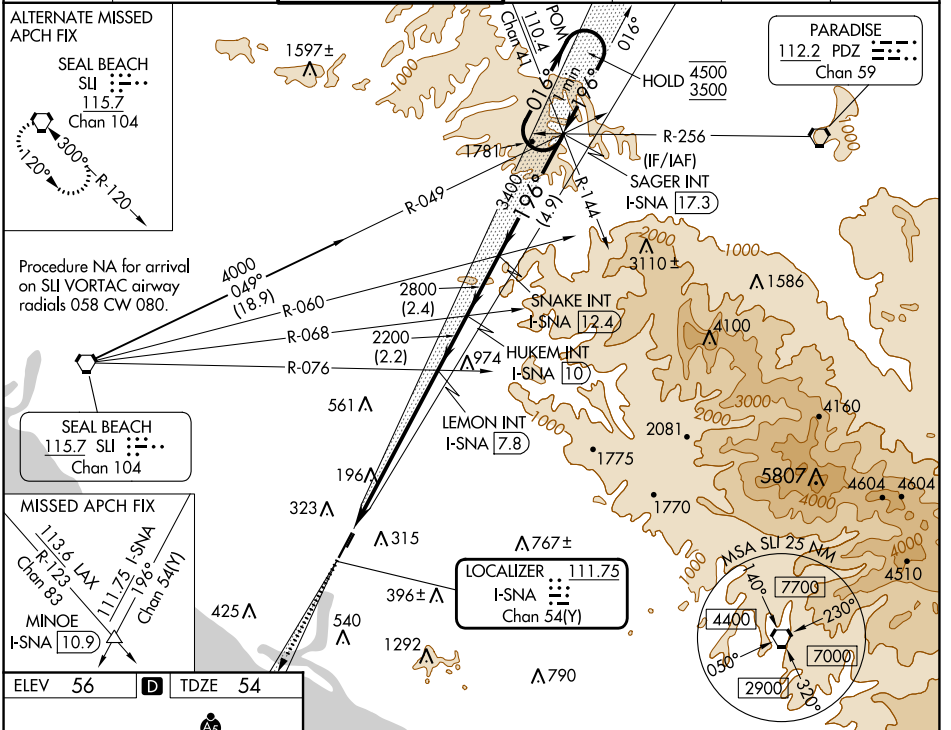


LOC/DME I-SNA 111.75 Chan 54(Y)	APP CRS 196°	Rwy Idg TDZE Apt Elev	5700 54 56
---	------------------------	-----------------------------	---------------------------------------

ILS RWY 20R (SA CAT I)

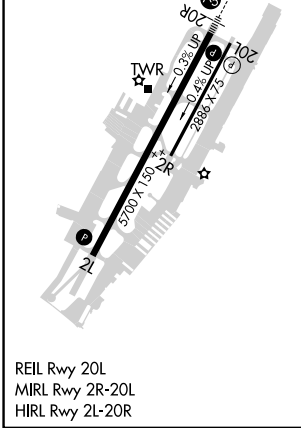
JOHN WAYNE/ORANGE COUNTY (SNA)

<p>Requires specific OPSPEC, MSPEC, or LOA approval. Procedure NA when tower closed.</p>	<p>MALS R</p>		<p>MISSED APPROACH: Climb to 3000 on I-SNA LOC south course (196°) to MINOE INT/I-SNA 10.9 DME.</p>			
	D-ATIS 126.0	SOCAL APP CON 121.3 263.1	JOHN WAYNE TOWER * 126.8 (CTAF) 0 343.625	GND CON 120.8	CLNC DEL 118.0	CPDLC



SW-3, 11 JUL 2024 to 08 AUG 2024

SW-3, 11 JUL 2024 to 08 AUG 2024



SA CATEGORY I ILS - SPECIAL AIRCREW & AIRCRAFT CERTIFICATION REQUIRED