

LOC/DME I-SNA 111.75 Chan 54(Y)	APP CRS 196°	Rwy Idg TDZE 54 Apt Elev 56	5700
---	------------------------	---	-------------

ILS or LOC RWY 20R

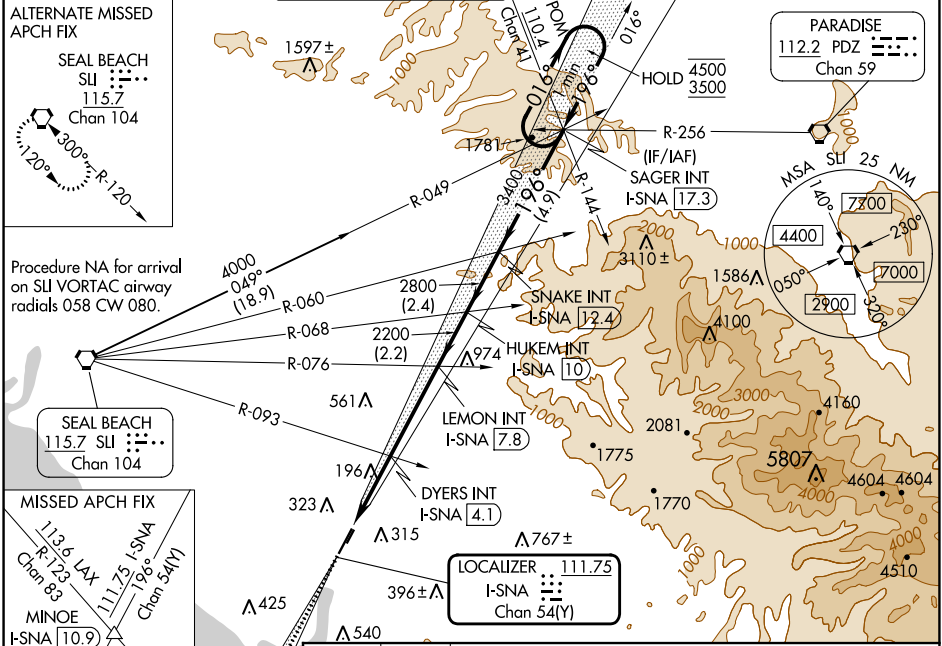
JOHN WAYNE/ORANGE COUNTY (SNA)

⚠ Circling Rwy 20L NA at night. For inop ALS, increase DYERS fix minimums S-LOC 20R Cat C and D visibility to RVR 6000.
*RVR 1800 authorized with the use of FD or AP or HUD to DA.

MALSR

MISSED APPROACH: Climb to 3000 on I-SNA LOC south course (196°) to MINOE INT/I-SNA 10.9 DME.

D-ATIS 126.0	SOCAL APP CON 121.3 263.1	JOHN WAYNE TOWER * 126.8 (CTAF) 343.625	GND CON 120.8	CLNC DEL 118.0	CPDLC	UNICOM 122.95
------------------------	-------------------------------------	--	-------------------------	--------------------------	-------	-------------------------



ALTERNATE MISSED APCH FIX

SEAL BEACH
SIL
115.7
Chan 104

Procedure NA for arrival on SIL VORTAC airway radials 058 CW 080.

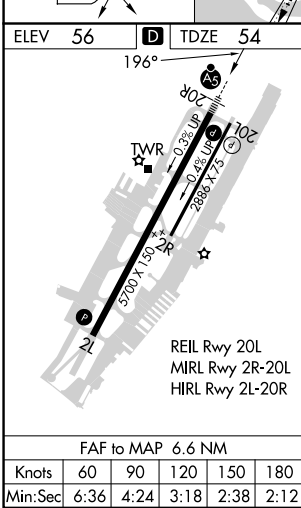
SEAL BEACH
115.7 SIL
Chan 104

MISSED APCH FIX

113.6 LAX
R-123
Chan 83

MINOE
I-SNA **10.9**

111.75 I-SNA
Chan 54(Y)



ELEV 56	D	TDZE 54	196°	MINOE	VGSI and ILS glidepath not coincident (VGSI Angle 3.00°/TCH 68).	SNAKE INT I-SNA 17.3	SAGER INT I-SNA 17.3	One Minute Holding Pattern	
3000	↑	I-SNA S crs (196°)	△	HUKEM INT I-SNA 12.4	196°	4500	←196° 3500	GS 3.00° TCH 51	
1040	1.1 NM	2200	1.9 NM	2200	3.6 NM	2800	2.2 NM	2.4 NM	4.9 NM

CATEGORY	A	B	C	D
S-ILS 20R*	255/24 201 (200-½)			
S-LOC 20R	1040/40 986 (1000-¾)	1040/55 986 (1000-1)	1040-2½	986 (1000-2½)
C CIRCLING	1040-1¼ 984 (1000-1¼)	1040-1½ 984 (1000-½)	1040-3 984 (1000-3)	1160-3 1104 (1200-3)
DYERS FIX MINIMUMS (DUAL VOR RECEIVERS OR DME REQUIRED)				
S-LOC 20R	460/24	406 (500-½)	460/40	406 (500-¾)
C CIRCLING	640-1	584 (600-1)	840-2¼ 784 (800-2¼)	1160-3 1104 (1200-3)

SW-3, 11 JUL 2024 to 08 AUG 2024

SW-3, 11 JUL 2024 to 08 AUG 2024