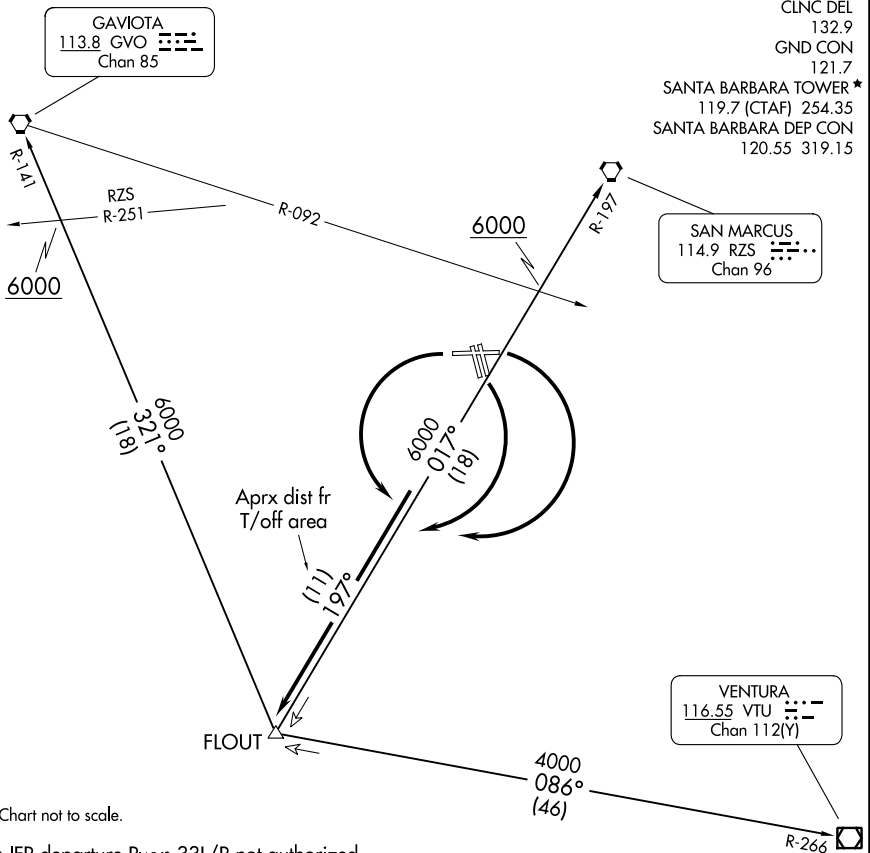


# FLOUT FIVE DEPARTURE

AL-378 (FAA)

SANTA BARBARA MUNI (SBA)  
SANTA BARBARA, CALIFORNIA



ATIS 132.65  
 CLNC DEL 132.9  
 GND CON 121.7  
 SANTA BARBARA TOWER\* 119.7 (CTAF) 254.35  
 SANTA BARBARA DEP CON 120.55 319.15

**SAN MARCUS**  
 114.9 RZS  
 Chan 96

**VENTURA**  
 116.55 VTU  
 Chan 112(Y)

**GAVIOTA**  
 113.8 GVO  
 Chan 85

NOTE: Chart not to scale.

NOTE: IFR departure Rwy 33L/R not authorized.

## DEPARTURE ROUTE DESCRIPTION

TAKEOFF RUNWAYS 7 and 15L/R: Turn right, thence. . . .

TAKEOFF RUNWAY 25: Turn left, thence. . . .

. . . . intercept and proceed via RZS R-197 to FLOUT INT. Thence via (transition or assigned route.)

GAVIOTA TRANSITION (FLOUT5.GVO): From over FLOUT INT via GVO R-141 to GVO VORTAC. Cross RZS R-251 at or above 6000'.

SAN MARCUS TRANSITION (FLOUT5.RZS): From over FLOUT INT via RZS R-197 to RZS VORTAC. Cross GVO R-092 at or above 6000'.

VENTURA TRANSITION (FLOUT5.VTU): From over FLOUT INT via VTU R-266 to VTU VOR/DME.