

SW-3, 11 JUL 2024 to 08 AUG 2024

DEPARTURE ROUTE DESCRIPTION

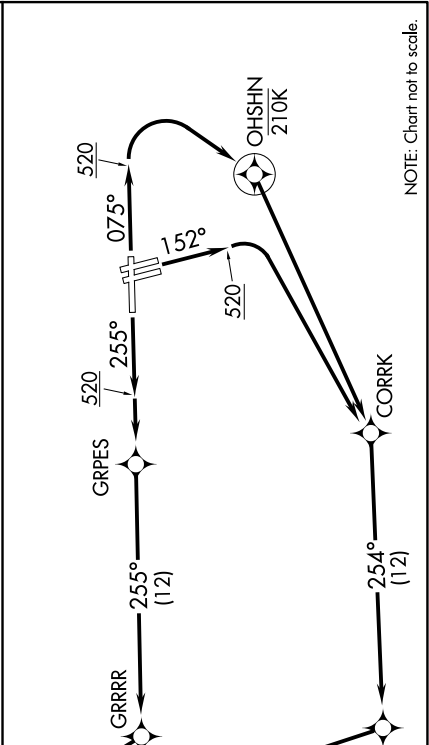
TAKEOFF RUNWAY 7: Climb on heading 075° to 520, then right turn direct OHSHN, then right turn direct CORRK, then on track 254° to KNNZI, then on track 331° to cross GAUCH at or above 6000, thence

TAKEOFF RUNWAYS 15L/R: Climb on heading 152° to 520, then right turn direct CORRK, then on track 254° to KNNZI, then on track 331° to cross GAUCH at or above 6000, thence

TAKEOFF RUNWAY 25: Climb on heading 255° to 520, then direct GRPES, then on track 255° to GRRRR, then on track 320° to cross GAUCH at or above 6000, thence

. . . .on (transition). Maintain ATC assigned altitude. Expect final altitude 10 minutes after departure.

MORRO BAY TRANSITION (GAUCH2.MQO)



NOTE: Chart not to scale.

ATIS
132.65
CLNC DEL
132.9
GND CON
121.7

SANTA BARBARA TOWER *
119.7 254.35
SANTA BARBARA DEP CON
120.55 319.15

**TOP ALTITUDE:
ASSIGNED BY ATC**

TAKEOFF MINIMUMS
Rwys 7, 15L/R, 25: Standard with a minimum climb of 500' per NM to 520.
Rwys 33L/R: NA-ATC.

NOTE: RNAV-1.
NOTE: RADAR required for non-GPS equipped aircraft.
NOTE: DME/DME/IRU or GPS required.
NOTE: Rwy 33L/R - IFR Departures NA.
NOTE: For non GPS-equipped aircraft departing Rwys 15L/R, RZS and GVO DMEs must be operational.
NOTE: For non GPS-equipped aircraft departing Rwy 7, GVO DME must be operational.

DEPARTURE ROUTE DESCRIPTION

TAKEOFF RUNWAY 7: Climb on heading 075° to 520, then right turn direct OHSHN, then right turn direct CORRK, then on track 254° to KNNZI, then on track 331° to cross GAUCH at or above 6000, thence

TAKEOFF RUNWAYS 15L/R: Climb on heading 152° to 520, then right turn direct CORRK, then on track 254° to KNNZI, then on track 331° to cross GAUCH at or above 6000, thence

TAKEOFF RUNWAY 25: Climb on heading 255° to 520, then direct GRPES, then on track 255° to GRRRR, then on track 320° to cross GAUCH at or above 6000, thence

. . . .on (transition). Maintain ATC assigned altitude. Expect final altitude 10 minutes after departure.

MORRO BAY TRANSITION (GAUCH2.MQO)

SW-3, 11 JUL 2024 to 08 AUG 2024