

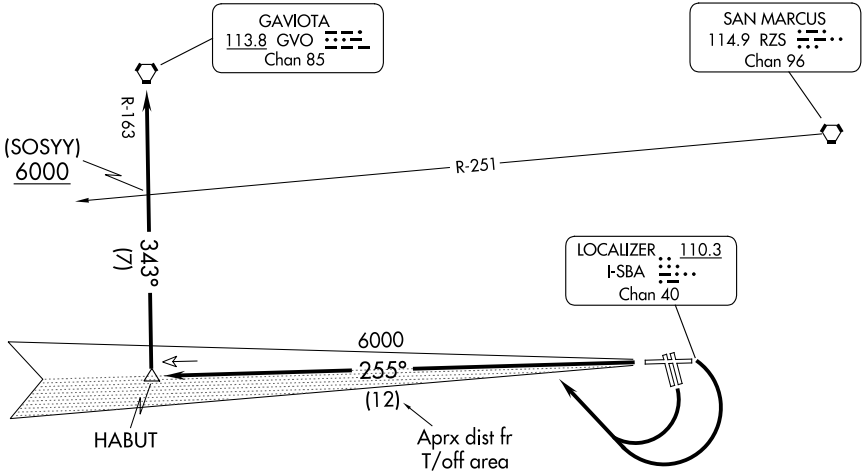
(HABUT4.GVO) 24025

HABUT FOUR DEPARTURE

AL-378 (FAA)

SANTA BARBARA MUNI (SBA)
SANTA BARBARA, CALIFORNIA

ATIS
132.65
CLNC DEL
132.9
GND CON
121.7
SANTA BARBARA TOWER *
119.7 (CTAF) 254.35
SANTA BARBARA DEP CON
120.55 319.15



SW-3, 11 JUL 2024 to 08 AUG 2024

SW-3, 11 JUL 2024 to 08 AUG 2024

NOTE: IFR departure Rwy 33L/R not authorized.

NOTE: Minimum (ATC) climb of 385' per NM to 6000.

NOTE: Chart not to scale.



DEPARTURE ROUTE DESCRIPTION

TAKEOFF RUNWAYS 7 and 15L/R: Turn right, intercept I-SBA west course to HABUT INT, thence via GVO R-163 to GVO VORTAC. Cross RZS R-251 at or above 6000'.

TAKEOFF RUNWAY 25: Intercept I-SBA west course to HABUT INT, thence via GVO R-163 to GVO VORTAC. Cross RZS R-251 at or above 6000'.

HABUT FOUR DEPARTURE
(HABUT4.GVO) 04SEP03

SANTA BARBARA, CALIFORNIA
SANTA BARBARA MUNI (SBA)