

WAAS CH 45606 W23A	APP CRS 238°	Rwy Idg TDZE Apt Elev	8002 3967 3967
--	------------------------	-----------------------------	---

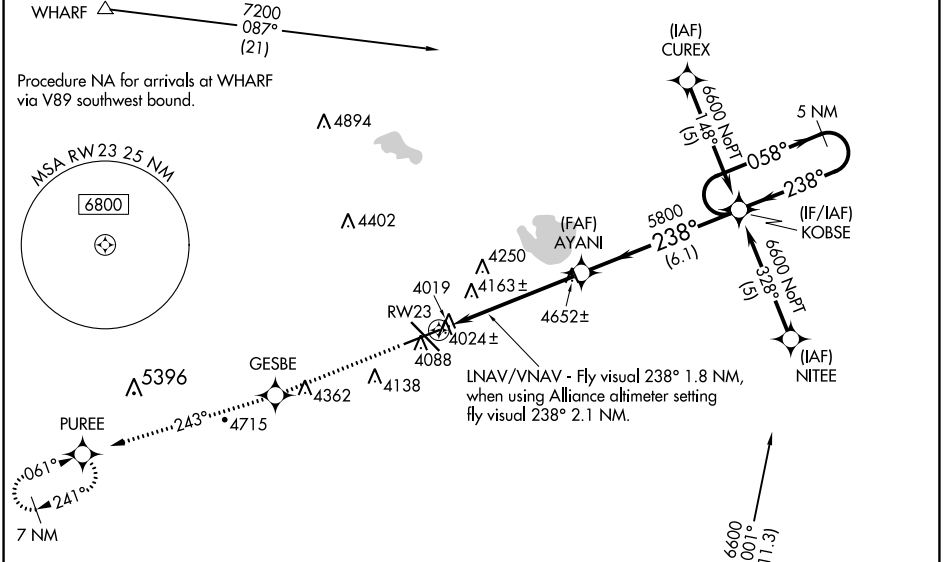
RNAV (GPS) RWY 23

WESTERN NEBRASKA RGNL/WM B HEILIG FLD/SCOTTSDLUFF (B'F'F)

⚠ When local altimeter setting not received, use Alliance altimeter setting: increase LPV DA to 4347 feet and visibility 1/4 SM; increase LNAV/VNAV DA to 4679 feet; increase all MDAs 100 feet and visibility Cats C and D 1/2 SM. Baro-VNAV NA when using Alliance altimeter setting. For uncompensated Baro-VNAV systems, LNAV/VNAV NA below -22°C (-7°F) or above 41°C (105°F). VDP NA when using Alliance altimeter setting. Visibility reduction by helicopters NA. DME/DME RNP-0.3 NA.

MISSED APPROACH: Climb to 6700 direct GESBE and via 243° track to PUREE and hold.

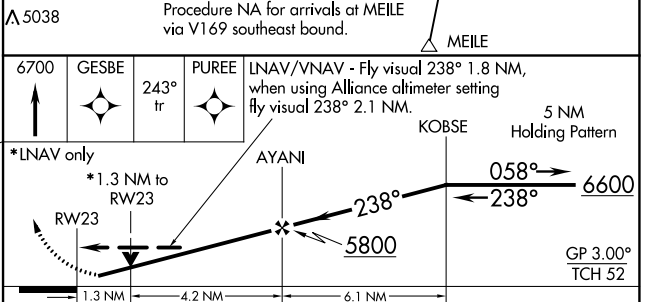
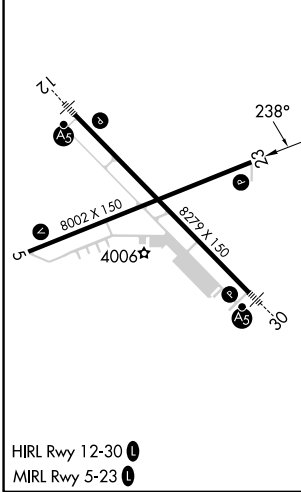
ASOS 121.025	DENVER CENTER 127.95 338.2	UNICOM 123.0 (CTAF) 1
------------------------	--------------------------------------	---------------------------------



NC-2, 11 JUL 2024 to 08 AUG 2024

NC-2, 11 JUL 2024 to 08 AUG 2024

ELEV 3967	D	TDZE 3967
-----------	----------	-----------



CATEGORY	A	B	C	D
LPV DA		4256-1	289 (300-1)	
LNAV/VNAV DA		4588-2	621 (700-2)	
LNAV MDA	4420-1	453 (500-1)	4420-1 1/4 453 (500-1 1/4)	4420-1 1/2 453 (500-1 1/2)
C CIRCLING	4500-1	533 (600-1)	4560-1 1/2 593 (600-1 1/2)	4740-2 1/2 773 (800-2 1/2)