

VORTAC BFF 112.6 Chan 73	APP CRS 245°	Rwy Idg TDZE 3967 Apt Elev 3967	8002 3967 3967
--	------------------------	---	---

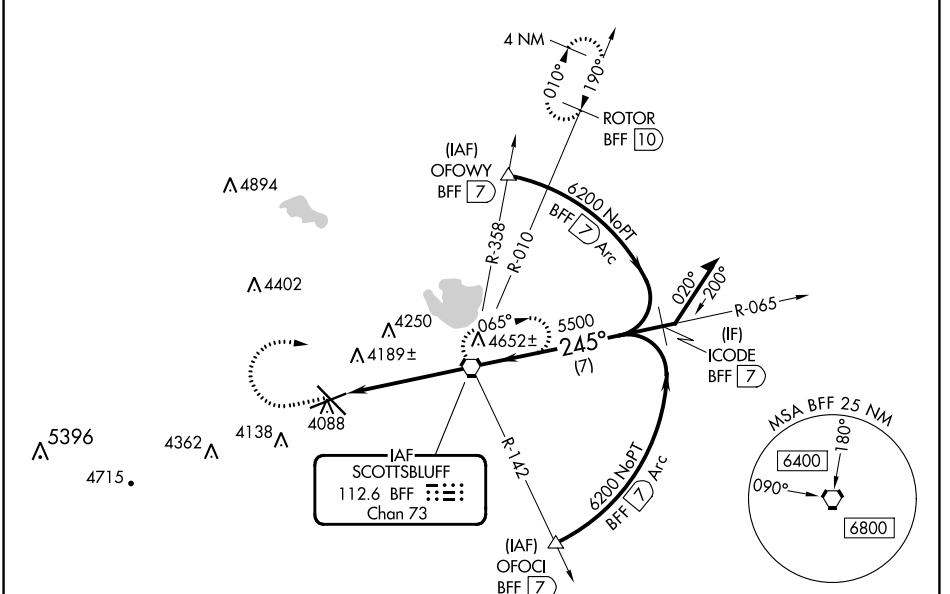
VOR or TACAN RWY 23

WESTERN NEBRASKA RGNL/WM B HEILIG FLD/SCOTTSBLUFF (BTF)

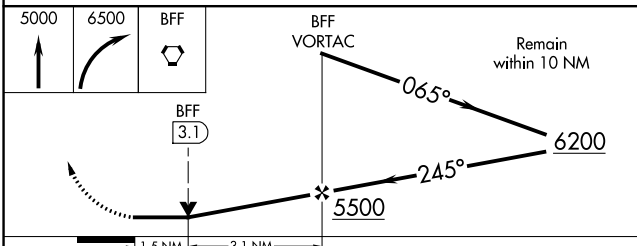
⚠ When local altimeter setting not received, use Alliance altimeter setting: increase all MDAs 100 feet and visibility Cats C and D ½ SM. VDP NA when using Alliance altimeter setting. Visibility reduction by helicopters NA.

MISSED APPROACH: Climb to 5000 then climbing right turn to 6500 direct BFF VORTAC and hold (TACAN aircraft continue climb to 7300 via BFF R-010 to ROTOR 10 DME and hold north, right turn 190° inbound).

ASOS 121.025	DENVER CENTER 127.95 338.2	UNICOM 123.0 (CTAF) 0
------------------------	--------------------------------------	---------------------------------



ELEV 3967	D TDZE 3967
-----------	--------------------



ELEV 3967	D TDZE 3967
HIRL Rwy 12-30 0	MIRL Rwy 5-23 0
FAF to MAP 4.7 NM	
Knots	60 90 120 150 180
Min:Sec	4:42 3:08 2:21 1:53 1:34

VOR or TACAN RWY 23

NC-2, 11 JUL 2024 to 08 AUG 2024

NC-2, 11 JUL 2024 to 08 AUG 2024