

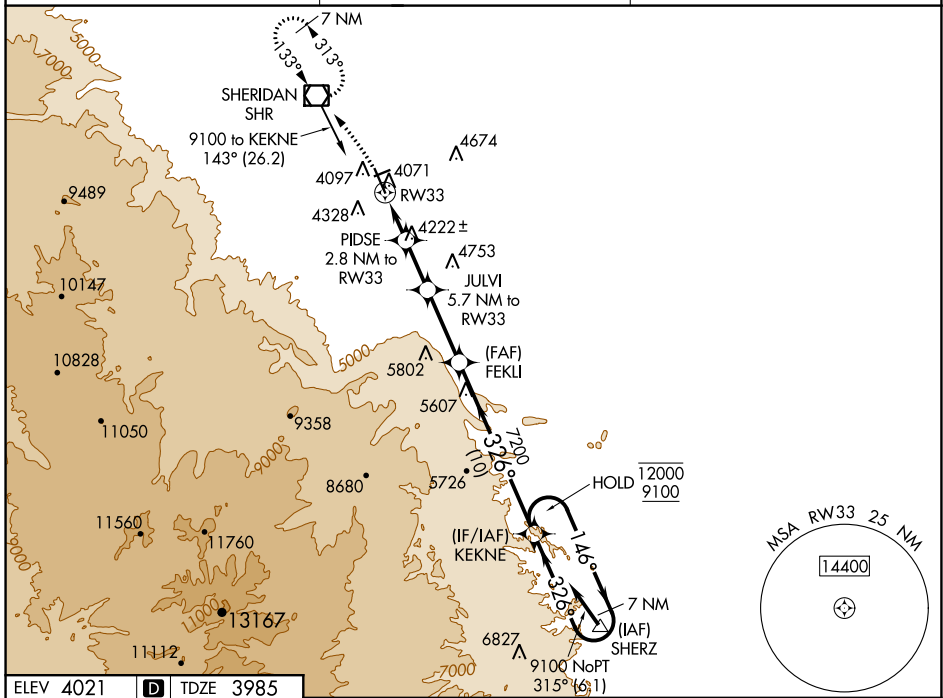
WAAS CH 65699 W33A	APP CRS 326°	Rwy Idg TDZE Apt Elev	8301 3985 4021
----------------------------------------	------------------------	-----------------------------	-------------------------------------------

RNAV (GPS) RWY 33

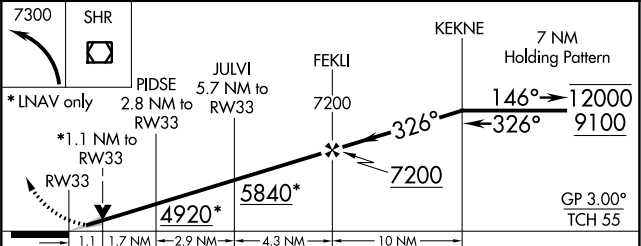
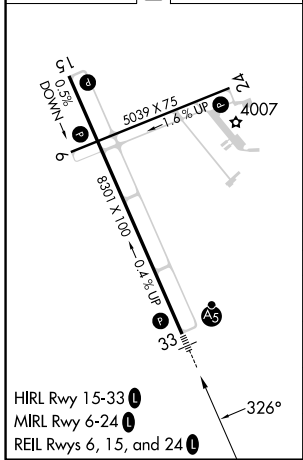
SHERIDAN COUNTY (SHR)

RNP APCH.	MALSR	MISSED APPROACH: Climbing left turn to 7300 direct SHR VOR/DME and hold, continue climb-in-hold to 7300.
Circling to Rwy 24 NA at night. Baro-VNAV NA. When local altimeter setting not received, procedure NA. -19°C		

ASOS 135.175	SALT LAKE CENTER 127.75 351.9	UNICOM 123.0 (CTAF)
------------------------	-----------------------------------------	-------------------------------



ELEV 4021		TDZE 3985
-----------	--	-----------



CATEGORY	A	B	C	D
LPV DA		4205-1/2	220 (200-1/2)	
LNAV/VNAV DA		4380-3/4	395 (400-3/4)	
LNAV MDA	4380-1/2	395 (400-1/2)	4380-5/8	395 (400-5/8)
CIRCLING	4600-1 579 (600-1)	4640-1 619 (700-1)	4860-2 1/2 839 (900-2 1/2)	5220-3 1199 (1200-3)

NW-1, 11 JUL 2024 to 08 AUG 2024

NW-1, 11 JUL 2024 to 08 AUG 2024