

VOR/DME SHR	APP CRS	Rwy Idg	<b>8301</b>
<b>113.55</b>	<b>131°</b>	TDZE	<b>4014</b>
Chan <b>82(Y)</b>		Apt Elev	<b>4021</b>

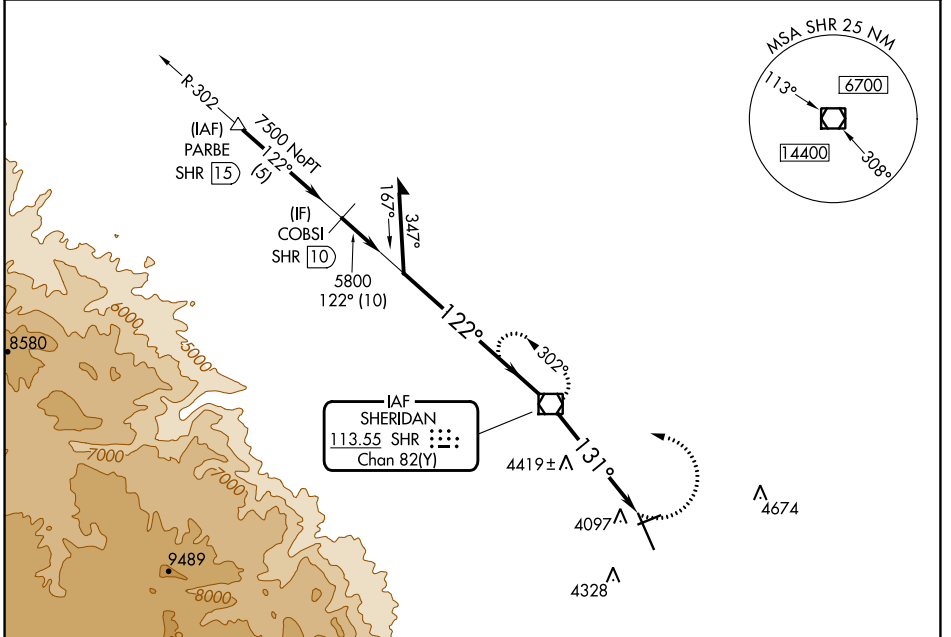
# VOR RWY 15

SHERIDAN COUNTY (SHR)

When local altimeter setting not received, procedure NA. Night landing: Rwy 24 NA.

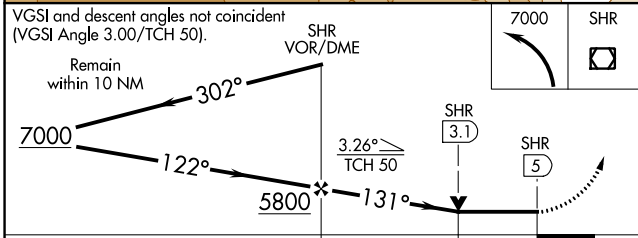
MISSED APPROACH: Climbing left turn to 7000 direct SHR VOR/DME and hold, continue climb-in-hold to 7000.

ASOS <b>135,175</b>	SALT LAKE CENTER <b>127.75 351.9</b>	UNICOM <b>123.0 (CTAF) 1</b>
------------------------	---	---------------------------------



NW-1, 11 JUL 2024 to 08 AUG 2024

NW-1, 11 JUL 2024 to 08 AUG 2024



ELEV 4021	D	TDZE 4014
-----------	---	-----------

HIRL Rwy 15-33 1  
MIRL Rwy 6-24 1  
REIL Rws 6, 15, and 24 1

FAF to MAP 5 NM

Knots	60	90	120	150	180
Min:Sec	5:00	3:20	2:30	2:00	1:40

CATEGORY	A	B	C	D
S-15	4680-1 666 (700-1)		4680-1 7/8 666 (700-1 7/8)	
CIRCLING	4680-1 659 (700-1)		4860-2 1/2 839 (900-2 1/2)	5220-3 1199 (1200-3)