

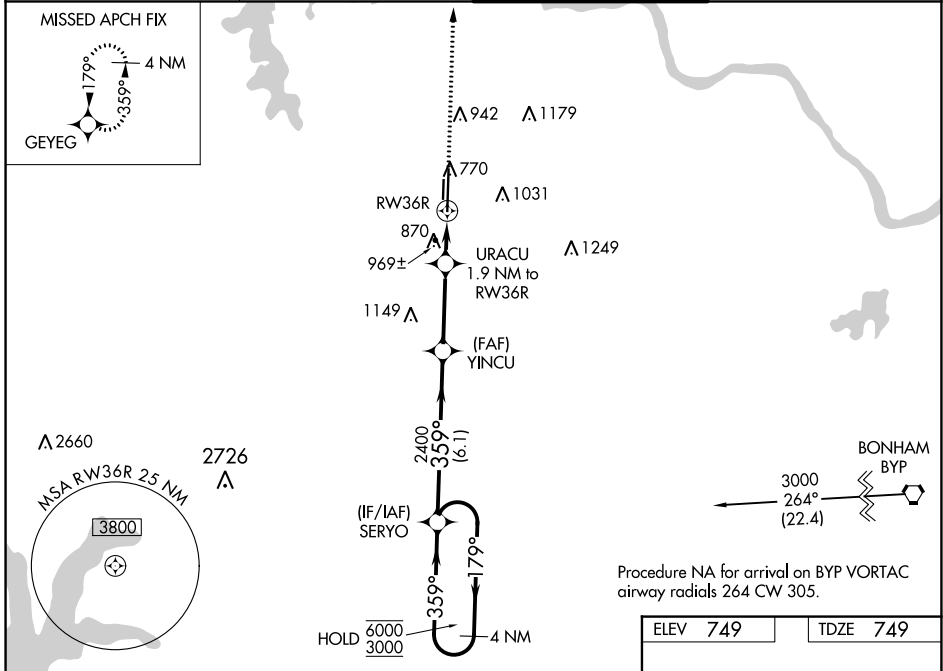
WAAS CH 65928 W36A	APP CRS 359°	Rwy Idg TDZE 749 Apt Elev 749	9000
----------------------------------------	------------------------	---------------------------------------------------	-------------

RNAV (GPS) RWY 36R

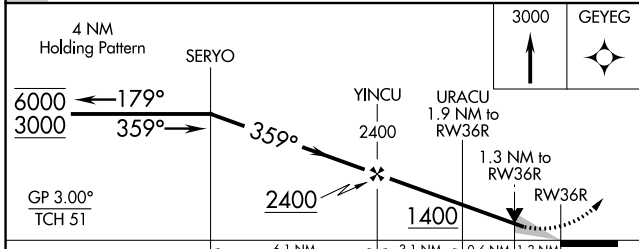
NORTH TEXAS RGNL/PERRIN FLD (GYI)

RNP APCH - GPS.		MALS	MISSED APPROACH: Climb to 3000 direct GEYEG and hold.
<p>⚠ Circling Rwy 18R, 36L NA at night. Inop table does not apply to LPV.</p> <p>⚠ For uncompensated Baro-VNAV systems, LNAV/VNAV NA below -10°C or above 54°C.</p>			

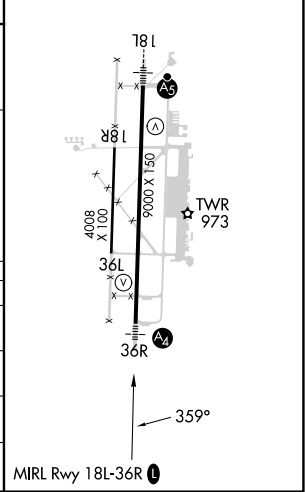
ATIS 118.775	FORT WORTH CENTER 124.75 323.0	NORTH TEXAS TOWER ★ 120.575 (CTAF) 0 233.7	GND CON 124.125
------------------------	------------------------------------------	------------------------------------------------------	---------------------------



Procedure NA for arrival on BYP VORTAC
airway radials 264 CW 305.



ELEV 749	TDZE 749
----------	----------



CATEGORY	A	B	C	D
LPV DA	949-3/4 200 (200-3/4)			
LNAV/VNAV DA	1220-13/8 471 (500-13/8)			
LNAV MDA	1220-3/4	471 (500-3/4)	1220-11/8	471 (500-11/8)
CIRCLING	1300-1	551 (600-1)	1400-13/4 651 (700-13/4)	1540-21/2 791 (800-21/2)

SC-2, 11 JUL 2024 to 08 AUG 2024

SC-2, 11 JUL 2024 to 08 AUG 2024