

# ILS or LOC Y RWY 15

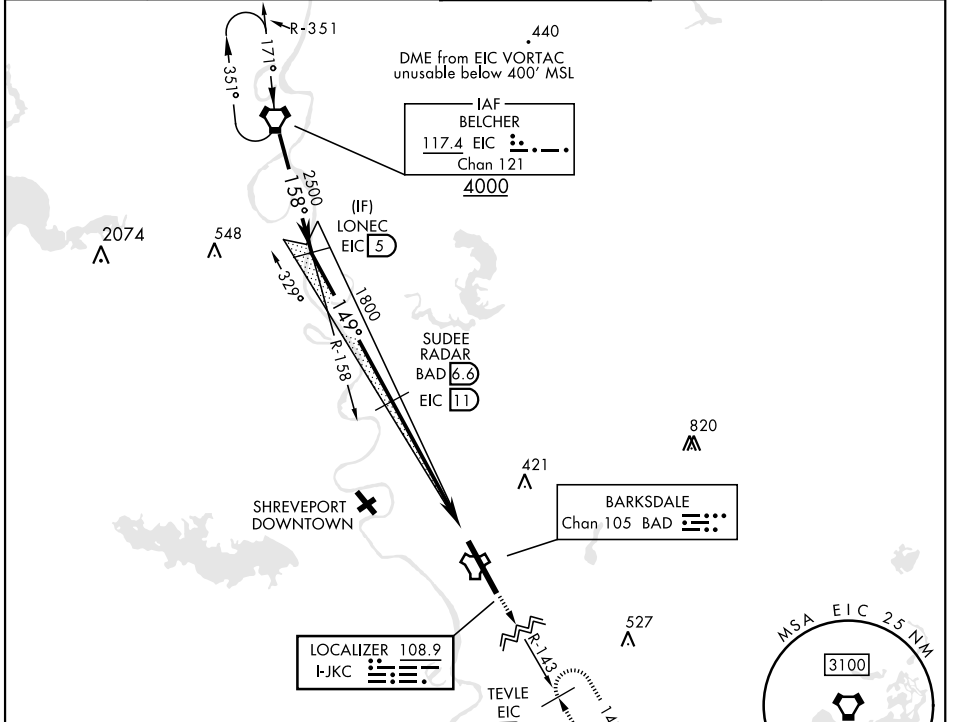
LOC I-JKC <b>108.9</b>	APCH CRS <b>149°</b>	Rwy Ldg <b>11,758</b>
		THRE <b>163</b>
		Arprt Elev <b>165</b>

[USAF]

BARKSDALE AFB (KBAD)

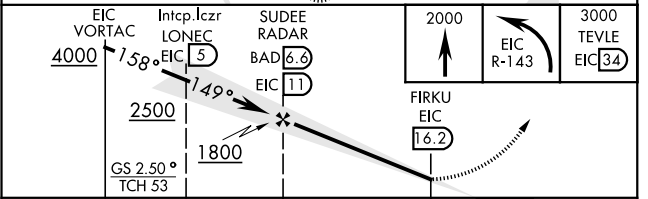
RADAR or DME required.	ALSF-1 	MISSED APPROACH: Climb to 2000, then climbing left turn to join EIC VORTAC R-143 outbound direct TEVLE (EIC 34 DME) and hold, maintain 3000.
* When ALS inop, increase RVR to 40 and vis to 3/4 mile. ** When ALS inop, increase CAT AB RVR to 55 and vis to 1 mile, CAT CDE vis to 1 3/8 miles. *** Circling not authorized W of Rwy.		

ATIS <b>307.025</b>	SHREVEPORT APP CON 320°-152° <b>123.75 360.725</b> 153°-319° <b>119.9 335.55</b>	TOWER ★ <b>128.25 278.3</b>	GND CON <b>121.8 253.5</b>	ASR
------------------------	--	--------------------------------	-------------------------------	-----



EMERG SAFE ALT 100 NM 3700

ELEV	165	THRE	163
HIRL Rwy 15-33			
FAF to MAP 5.2 NM			
Knots	60	90	120
Min:Sec	5:12	3:28	2:36
		2:05	1:44



CATEGORY	A	B	C	D	E
S-ILS 15*	363/24		200	(200-1/2)	
S-LOC 15**	640/24	477 (500-1/2)	640/50	477	(500-1)
***	NOT AUTHORIZED		760-2 595 (600-2)	780-2 1/4 615 (700-2 1/4)	

# ILS or LOC Y RWY 15

SC-4, 11 JUL 2024 to 08 AUG 2024

SC-4, 11 JUL 2024 to 08 AUG 2024