

SIoux CITY, IOWA

AL-395 (FAA)

22223

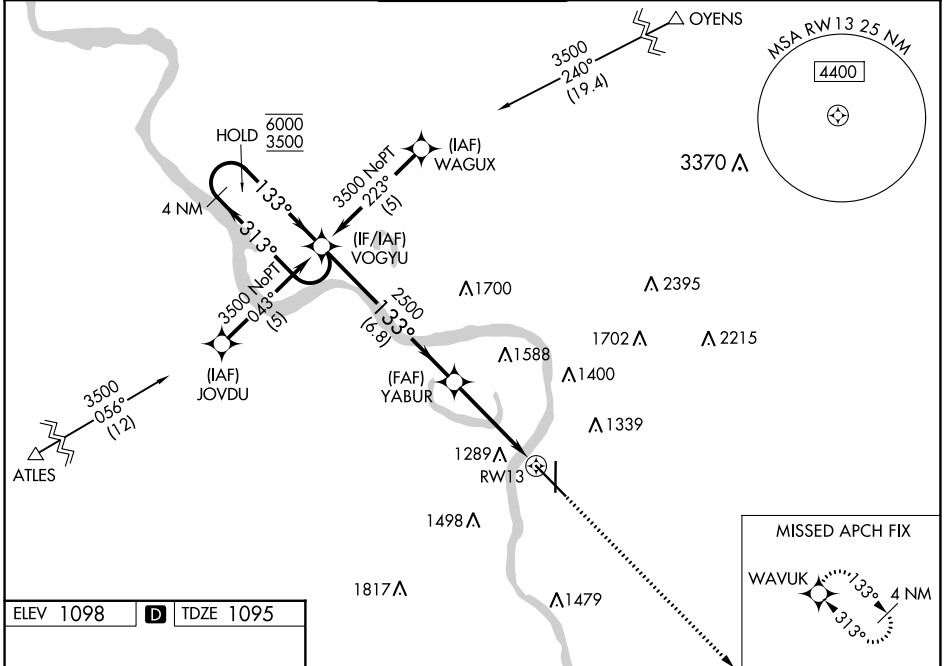
WAAS CH 57911 W13A	APP CRS 133°	Rwy Idg TDZE Apt Elev	9002 1095 1098
--	------------------------	-----------------------------	---

RNAV (GPS) RWY 13

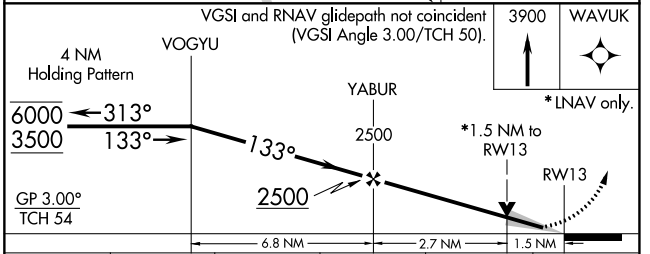
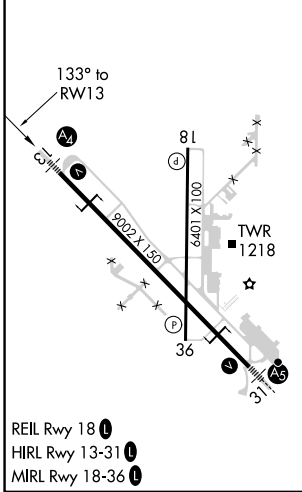
SIoux GATEWAY/BRIG GENERAL BUD DAY FLD (SUx)

RNP APCH-GPS.		MALS	MISSED APPROACH: Climb to 3900 direct WAVUK and hold.
<p>⚠ Inop table does not apply to LPV all Cats. For uncompensated Baro-VNAV systems, LNAV/VNAV NA below -20°C or above 54°C. For inop ALS, increase LNAV/VNAV Cat E visibility to 1½ SM and LNAV Cat E visibility to 1½ SM.</p>			

ATIS 119.45 270.8	SIoux CITY APP CON * 124.6 307.0	SIoux CITY TOWER * 118.7 (CTAF) 0 254.3	GND CON 121.9 348.6	UNICOM 122.95
-----------------------------	--	---	-------------------------------	-------------------------



ELEV 1098	D	TDZE 1095
-----------	----------	-----------



CATEGORY	A	B	C	D	E
LPV DA	1295/40		200 (200-¾)		
LNAV/VNAV DA	1582/60		487 (500-1¼)		
LNAV MDA	1620/40 525 (600-¾)		1620-1¼ 525 (600-1¼)		
C CIRCLING	1640-1 542 (600-1)	1700-1 602 (700-1)	1700-1¼ 602 (700-1¼)	1860-2½ 762 (800-2½)	2000-3 902 (1000-3)

SIoux CITY, IOWA
Orig-G 11AUG22

SIoux GATEWAY/BRIG GENERAL BUD DAY FLD (SUx)
42°24'N-96°23'W
RNAV (GPS) RWY 13

NC-3, 11 JUL 2024 to 08 AUG 2024

NC-3, 11 JUL 2024 to 08 AUG 2024