

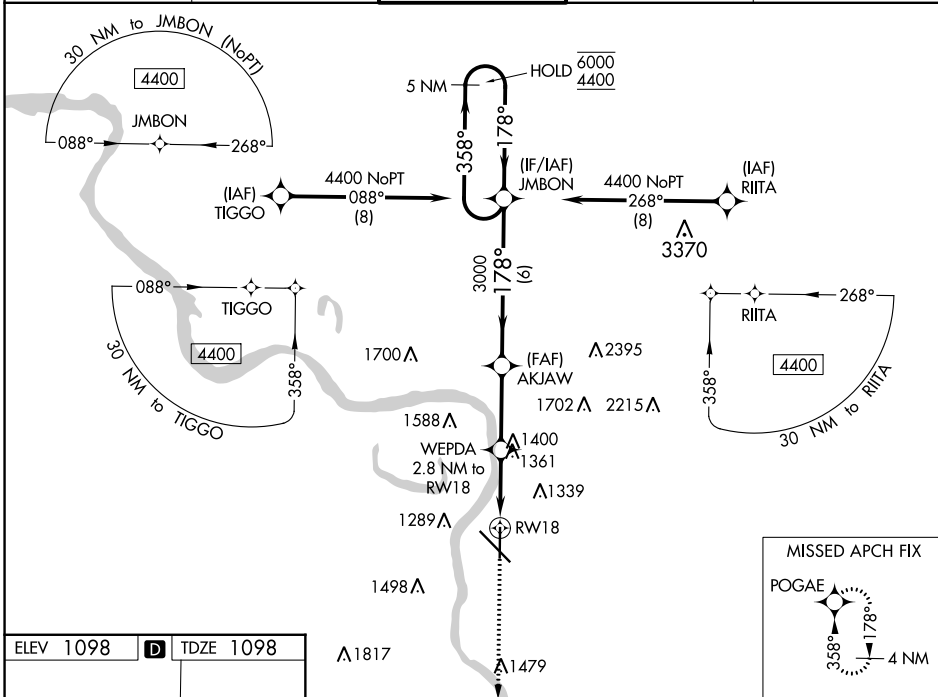
WAAS CH 77838 W18A	APP CRS 178°	Rwy Idg TDZE Apt Elev	6400 1098 1098
--	------------------------	-----------------------------	---

RNAV (GPS) RWY 18

SIoux GATEWAY/BRIG GENERAL BUD DAY FLD (SUX)

RNP APCH.	For uncompensated Baro-VNAV systems, LNAV/VNAV NA below -20°C or above 54°C.	MISSED APPROACH: Climb to 3200 direct POGAE and hold.
-----------	---	---

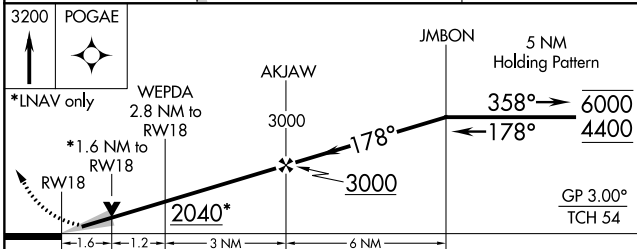
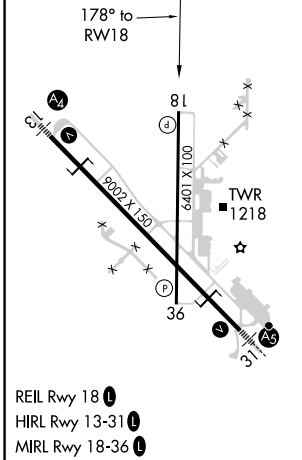
ATIS 119.45 270.8	SIoux CITY APP CON * 124.6 307.0	SIoux CITY TOWER * 118.7 (CTAF) 0 254.3	GND CON 121.9 348.6	UNICOM 122.95
-----------------------------	--	---	-------------------------------	-------------------------



NC-3, 11 JUL 2024 to 08 AUG 2024

NC-3, 11 JUL 2024 to 08 AUG 2024

ELEV 1098	D	TDZE 1098
-----------	----------	-----------



CATEGORY	A	B	C	D
LPV DA		1352-3/4	254 (300-3/4)	
LNAV/ VNAV DA		1430-1	332 (400-1)	
LNAV MDA	1680-1	582 (600-1)	1680-1 3/4	582 (600-1 3/4)
C CIRCLING	1680-1 582 (600-1)	1700-1 602 (700-1)	1700-1 3/4 602 (700-1 3/4)	1860-2 1/2 762 (800-2 1/2)