

APP CRS	Rwy Idg	8199
076°	TDZE	2376
	Apt Elev	2385

RNAV (RNP) Z RWY 8

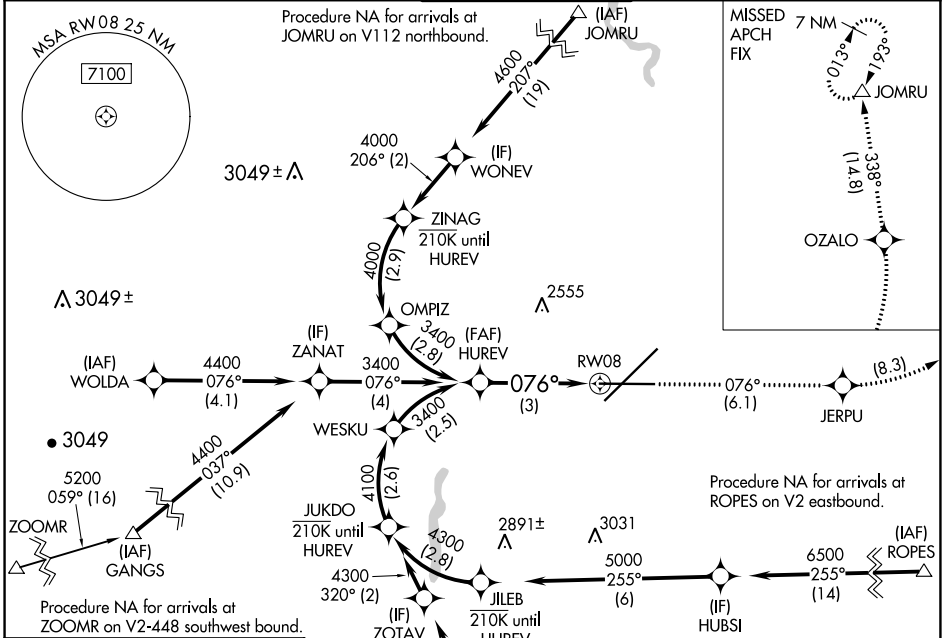
SPOKANE INTL (GEG)

RNP AR APCH. RF required.

▼ For uncompensated Baro-VNAV systems, procedure NA below -18°C or above 53°C.

MISSED APPROACH: Climb to 7000 on track 076° to JERPU, left turn to OZALO, and on track 338° to JOMRU and hold.

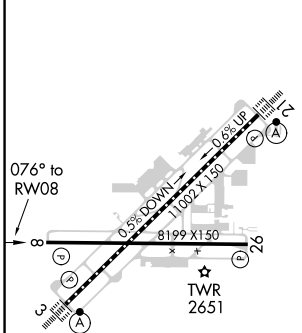
ATIS	SPOKANE APP CON	SPOKANE TOWER	GND CON	CLNC DEL
124.325 254.375	123.75 282.25 (205°-025°) 133.35 263.0 (026°-204°)	118.3 278.3	121.9 348.6	127.55



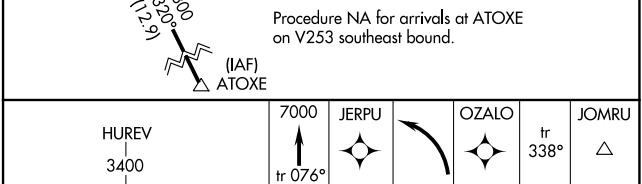
NW-1, 11 JUL 2024 to 08 AUG 2024

NW-1, 11 JUL 2024 to 08 AUG 2024

ELEV 2385	D	TDZE 2376
-----------	----------	-----------



TDZ/CL Rwy5 3 and 21
REIL Rwy5 8 and 26
HIRL Rwy 3-21
MIRL Rwy 8-26



GP 3.00°	TCH 60
3 NM	
CATEGORY	A B C D
RNP 0.11 DA	2665-7/8 289 (300-7/8)
RNP 0.30 DA	2869-1 3/8 493 (500-1 3/8)

AUTHORIZATION REQUIRED