

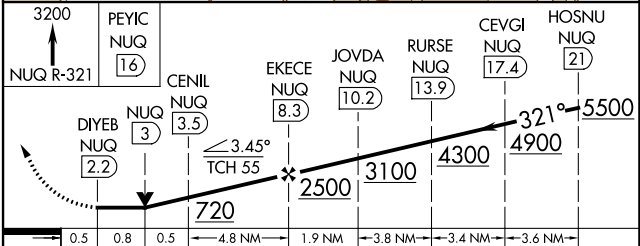
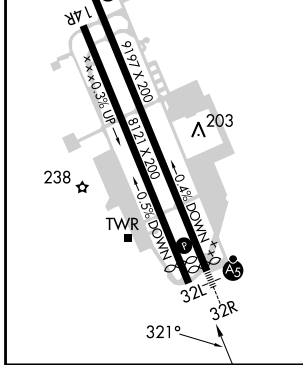
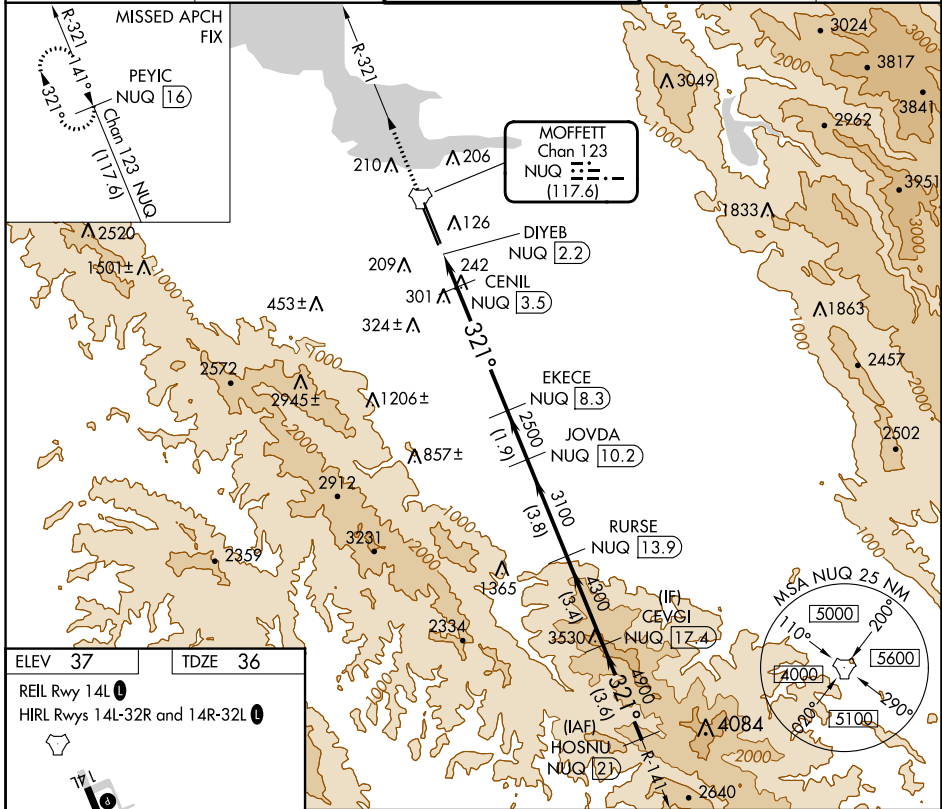
TACAN NUQ Chan 123 (117.6)	APP CRS 321°	Rwy Idg TDZE 36 Apt Elev 37	7521
--	------------------------	---	-------------

TACAN RWY 32L

MOFFETT FEDERAL AIRFIELD (NUQ)

RADAR required for procedure entry.		MISSED APPROACH: Climb to 3200 on NUQ TACAN R-321 to PEYIC/16 DME and hold.	
Rwy 32L helicopter visibility reduction below 3/4 SM NA.			

ATIS 124.175 283.0	NORCAL APP CON 120.1 290.25	MOFFETT TOWER ★ 119.55 (CTAF) 259.65	GND CON 121.85 278.95	CLNC DEL 296.75
------------------------------	---------------------------------------	---	---------------------------------	---------------------------



CATEGORY	A	B	C	D	E
S-32L	560-1	524 (600-1)	560-1½ 524 (600-1½)		
CIRCLING	560-1 523 (600-1)	600-1 563 (600-1)	620-1½ 583 (600-1½)	780-2½ 743 (800-2½)	940-3 903 (1000-3)

SW-2, 11 JUL 2024 to 08 AUG 2024

SW-2, 11 JUL 2024 to 08 AUG 2024