

TACAN NUQ Chan 123 (117.6)	APP CRS 321°	Rwy ldg TDZE 31 Apt Elev 37
--	------------------------	---

TACAN RWY 32R

MOFFETT FEDERAL AIRFIELD (NUQ)

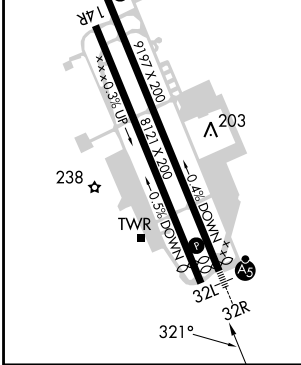
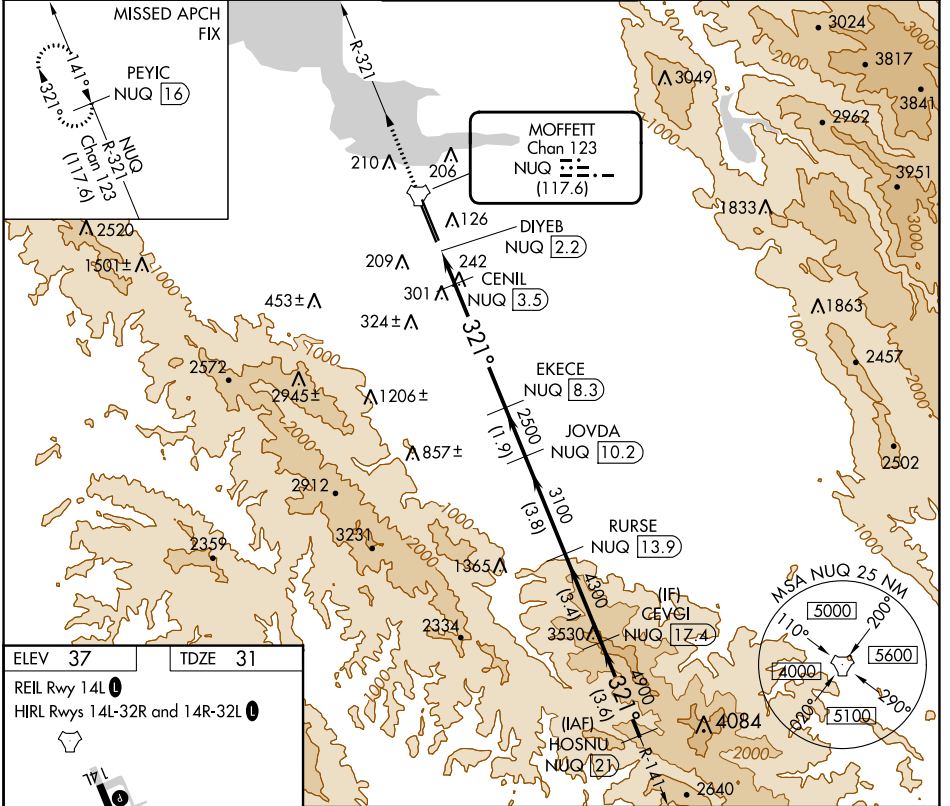
RADAR required for procedure entry.

For inop ALS, increase Cat E visibility to 1 1/2 SM.

MALSRL

MISSED APPROACH: Climb to 3200 on NUQ TACAN R-321 to PEYIC/16 DME and hold.

ATIS 124.175 283.0	NORCAL APP CON 120.1 290.25	MOFFETT TOWER ★ 119.55 (CTAF) 259.65	GND CON 121.85 278.95	CLNC DEL 296.75
------------------------------	---------------------------------------	--	---------------------------------	---------------------------



ELEV 37	TDZE 31	REIL Rwy 14L					HIRL Rwys 14L-32R and 14R-32L				
3200	PEYIC NUQ [16]	VGS and descent angles not coincident (VGS Angle 3.00/TCH 55).					CEVGI NUQ [17.4]	HOSNU NUQ [21]			
	EKECE NUQ [8.3]	JOVDA NUQ [10.2]	RURSE NUQ [13.9]	CEVGI NUQ [17.4]	HOSNU NUQ [21]						
	CENIL NUQ [3.5]	DIYEB NUQ [2.2]	3.48° TCH 55	720	2500	3100	4300	4900	5500		
	0.5	1.3 NM	4.8 NM	1.9 NM	3.8 NM	3.4 NM	3.6 NM				
CATEGORY	A	B	C	D	E						
S-32R	560-1/2	529 (600-1/2)	560-1	529 (600-1)							
CIRCLING	560-1	600-1	620-1/2	780-2/2	940-3						
	523 (600-1)	563 (600-1)	583 (600-1/2)	743 (800-2/2)	903 (1000-3)						

SW-2, 11 JUL 2024 to 08 AUG 2024

SW-2, 11 JUL 2024 to 08 AUG 2024