

FORT LEWIS, WASHINGTON

ILS or LOC RWY 15

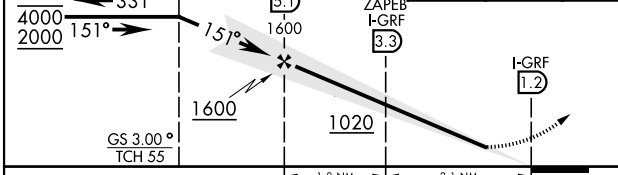
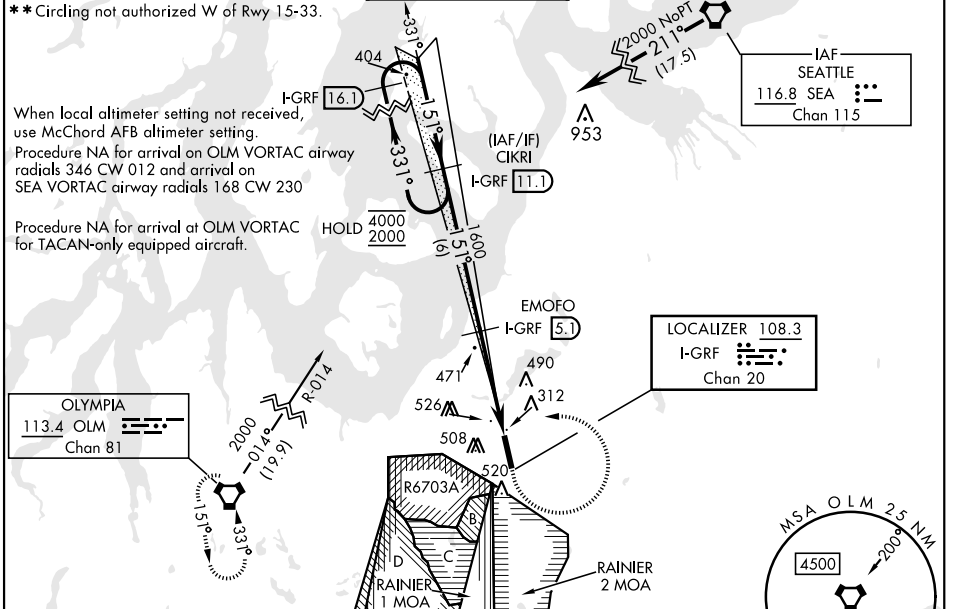
LOC I-GRF 108.3 Chan 20	APCH CRS 151°	Rwy Idg TDZE Arprt Elev 6124 300 301	AL-413 [USA] GRAY AAF (JOINT BASE LEWIS MCCORD) (KGRF)
--------------------------------------	-------------------------	--	--

RNAV1 - GPS from SEA VORTAC.

SSALR MISSED APPROACH: Climb to 1000, then climbing left turn to 3000 on hdg 270° and OLM VORTAC R-014, then continue climb to 4000 on OLM R-014 to OLM and hold.

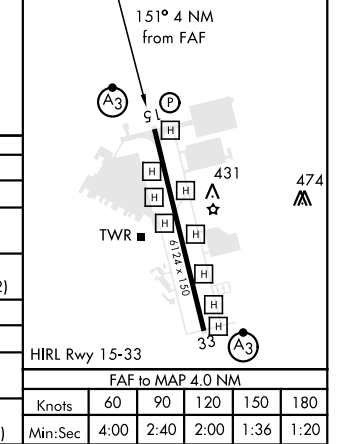
DME required for civil use. For non-RNAV aircraft, RADAR required from SEA VORTAC.
 * When ALS inop when using McChord AFB altimeter setting, increase LOC CAT C/D vis to RVR 55.
 ** Circling not authorized W of Rwy 15-33.

ATIS 124.65	SEATTLE APP CON 306.2	TOWER ★ 119.325 (CTAF) 256.8	GND CON 121.9 290.2	CLNC DEL 121.9 290.2	PAR
-----------------------	---------------------------------	---	--------------------------------------	---------------------------------------	-----



ELEV	301	TDZE	300
------	-----	------	-----

CATEGORY	A	B	C	D
S-ILS 15	500/24		200	(200-½)
S-LOC 15	640/24	340 (400-½)	640/26	340 (400-½)
** CIRCLING	840-1	539 (600-1)	840-1½ 539 (600-1½)	920-2 619 (700-2)
McCHORD FLD ALTIMETER SETTING MINIMUMS				
S-ILS 15	516/24		216	(300-½)
S-LOC 15*	660/24	360 (400-½)	660/35	360 (400-¾)
** CIRCLING	860-1	559 (600-1)	860-1½ 559 (600-1½)	940-2 639 (700-2)



ILS or LOC RWY 15

NW-1, 11 JUL 2024 to 08 AUG 2024

NW-1, 11 JUL 2024 to 08 AUG 2024