

LEWIS THREE DEPARTURE (GRAY3 • GRAY)

FORT LEWIS, WASHINGTON

ATIS 124.65 306.2
 CLNC DEL
 121.9 290.2
 GND CON
 121.9 290.2
 GRAY TOWER ★
 119.325 (CTAF) 256.8
 SEATTLE DEP CON
 120.1 290.9

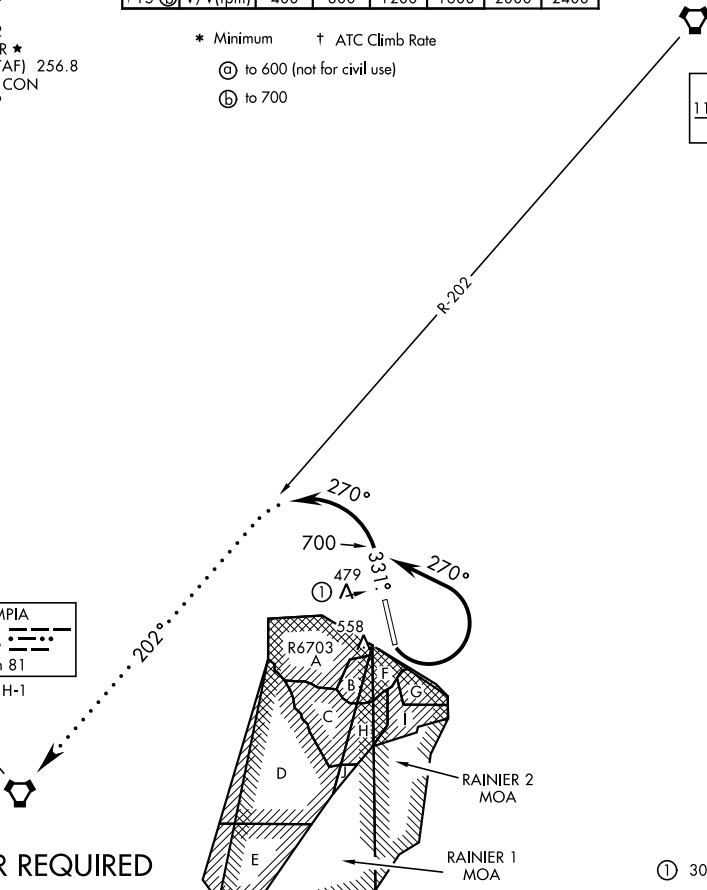
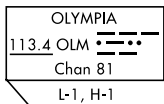
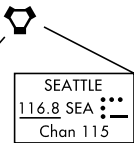
Rwy	Knots	60	120	180	240	300	360
* 33 (a)	V/V(fpm)	469	938	1407	1876	2345	2814
† 15 (b)	V/V(fpm)	400	800	1200	1600	2000	2400

AL-413 [USA]

* Minimum † ATC Climb Rate

(a) to 600 (not for civil use)

(b) to 700



RADAR REQUIRED

(1) 3003' from Rwy 33

DEPARTURE ROUTE DESCRIPTION

TAKE-OFF RWY 15: Turn left as soon as practical (departing 700), thence . . .

TAKE-OFF RWY 33: Climb heading 331° to 700, thence . . .

Turn left (unless otherwise directed by ATC) heading 270° for RADAR vectors to assigned route. Maintain altitude as assigned by ATC. Expect filed altitude within 5 min after departure.

LOST COMMUNICATIONS: If no transmissions are received within three minutes after departure, continue climb to assigned altitude, intercept and proceed via SEA VORTAC R-202 to the OLM VORTAC, then via assigned route.

LEWIS THREE DEPARTURE (GRAY3 • GRAY)

FORT LEWIS, WASHINGTON

GRAY AAF (JOINT BASE LEWIS MCCORD) (KGRF)

NW-1, 11 JUL 2024 to 08 AUG 2024

NW-1, 11 JUL 2024 to 08 AUG 2024