

# MOCAA FOUR DEPARTURE (RNAV)

AL-414 (FAA)

TACOMA, WASHINGTON

NW-1, 11 JUL 2024 to 08 AUG 2024

## DEPARTURE ROUTE DESCRIPTION

**TAKEOFF RUNWAY 16:** Climb on heading 165° to 3000, then climbing left turn direct to cross **ALDER** at or above 5800 and at or below 9000, then on track 111° to MOCAA, thence . . . .

**TAKEOFF RUNWAY 34:** Climb on heading 345° to 3000, then climbing left turn direct **NEECE**, then on track 188° to cross **NISQA** at 4000, then on track 129° to cross **KUSCE** at or above 4000 and at or below 250K, then on track 086° to cross **ALDER** at or above 5800 and at or below 9000, then on track 111° to MOCAA, thence . . . .

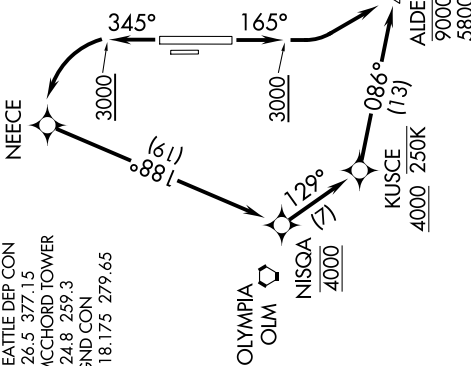
. . . . (transition). Maintain 9000, expect filed altitude five minutes after departure.

**BAKER CITY TRANSITION (MOCAA4.BKE)**

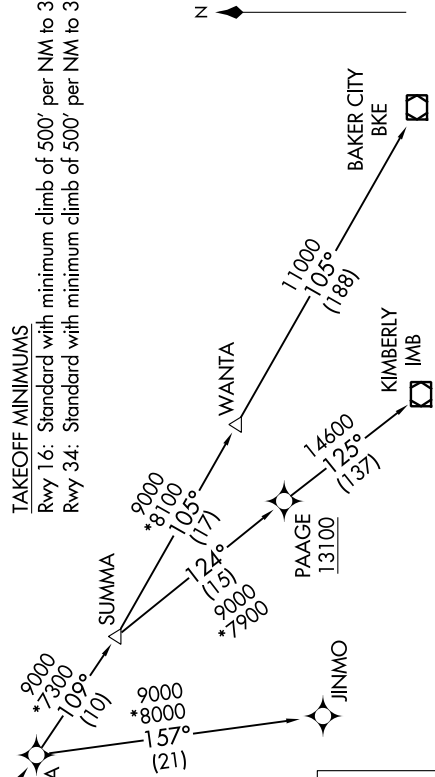
**JINMO TRANSITION (MOCAA4.JINMO)**

**KIMBERLY TRANSITION (MOCAA4.IMB)**

- D-ATIS 135.825 270.1
- SEATTLE DEP CON 126.5 377.15
- MCCHORD TOWER 124.8 259.3
- GND CON 118.175 279.65



**TAKEOFF MINIMUMS**  
 Rwy 16: Standard with minimum climb of 500' per NM to 3000.  
 Rwy 34: Standard with minimum climb of 500' per NM to 3000.



NOTE: RNAV 1.  
 NOTE: GPS required.  
 NOTE: Chart not to scale.

**TOP ALTITUDE:**  
**BAKER CITY and JINMO Transitions: 9000**  
**KIMBERLY Transition: 13100**

NW-1, 11 JUL 2024 to 08 AUG 2024