

LOC/DME I-AMP <b>108.9</b> Chan <b>26</b>	APP CRS <b>007°</b>	Rwy Idg <b>10800</b> TDZE <b>11</b> Apt Elev <b>26</b>
---	------------------------	--

# ILS or LOC RWY 1L

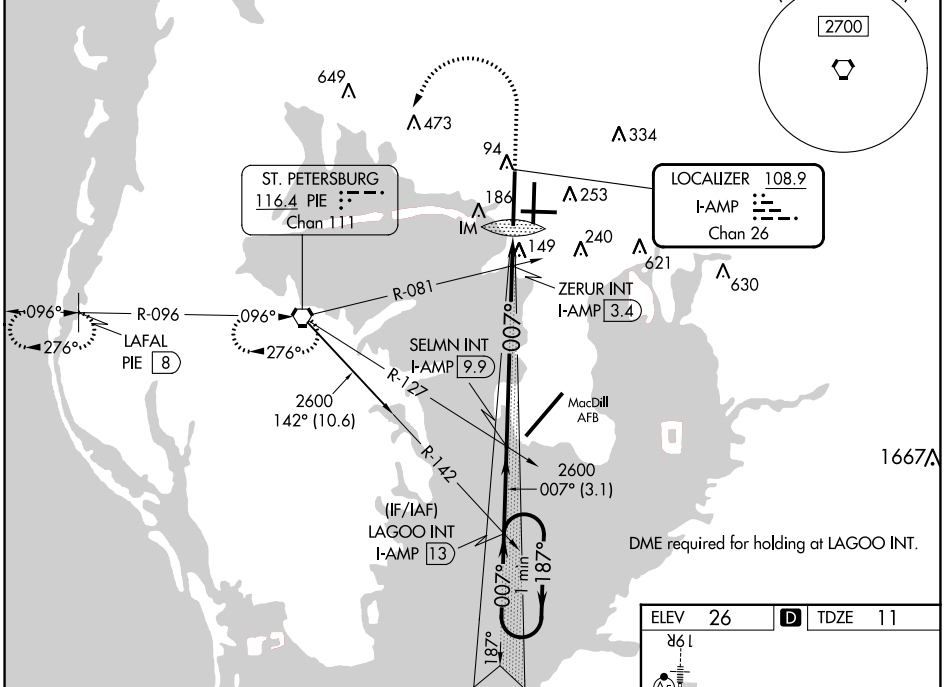
TAMPA INTL (TPA)

Simultaneous approach authorized.  
 For inop ALS, increase S-ILS 1L Cat E visibility to RVR 4000 and S-LOC 1L Cats C/D/E visibility to RVR 6000.

ALS-F-2 MISSED APPROACH: Climb to 500 then climbing left turn to 3000 direct PIE VORTAC and hold, continue climb-in-hold to 3000 (TACAN aircraft climb to 500 then climbing left turn to 4000 direct PIE VORTAC then on PIE VORTAC R-276 to LAFAL/PIE 8 DME and hold W, RT, 096 inbound)

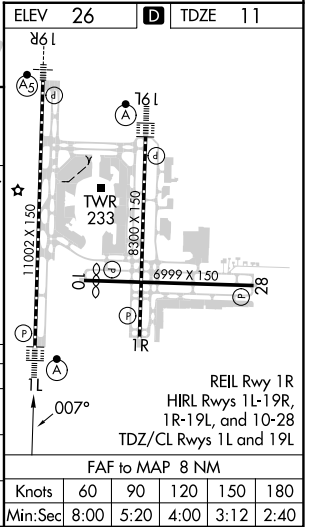
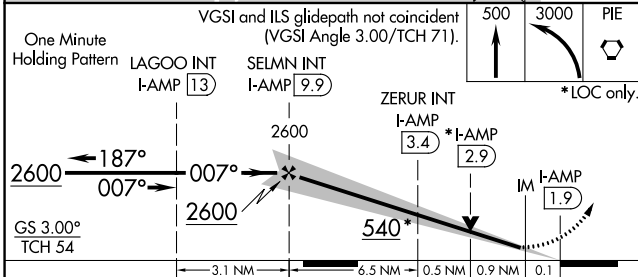
ARR <b>126.45</b>	D-ATIS <b>128.475</b>	DEP <b>118.5 307.175</b>	TAMPA APP CON <b>119.5 269.4</b>	TAMPA TOWER <b>121.7 269.4</b>	GND CON <b>121.7 269.4</b>	CLNC DEL <b>133.6</b>	CPDLC
----------------------	--------------------------	-----------------------------	-------------------------------------	-----------------------------------	-------------------------------	--------------------------	-------

## DME and RADAR REQUIRED



SE-3, 11 JUL 2024 to 08 AUG 2024

SE-3, 11 JUL 2024 to 08 AUG 2024



CATEGORY	A	B	C	D	E
S-ILS 1L	211/18 200 (200-1/2)				
S-LOC 1L	400/24	389 (400-1/2)	400/40	389 (400-3/4)	
CIRCLING	560-1	534 (600-1)	680-13/4 654 (700-13/4)	980-3	954 (1000-3)