

# HI-TACAN RWY 31

TACAN FOE Chan <b>53</b>	APCH CRS <b>304°</b>	Rwy ldg <b>12,803</b> TDZE <b>1037</b> Arprt Elev <b>1078</b>
-----------------------------	-------------------------	---

[USAF]

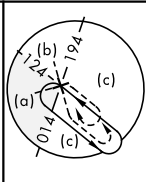
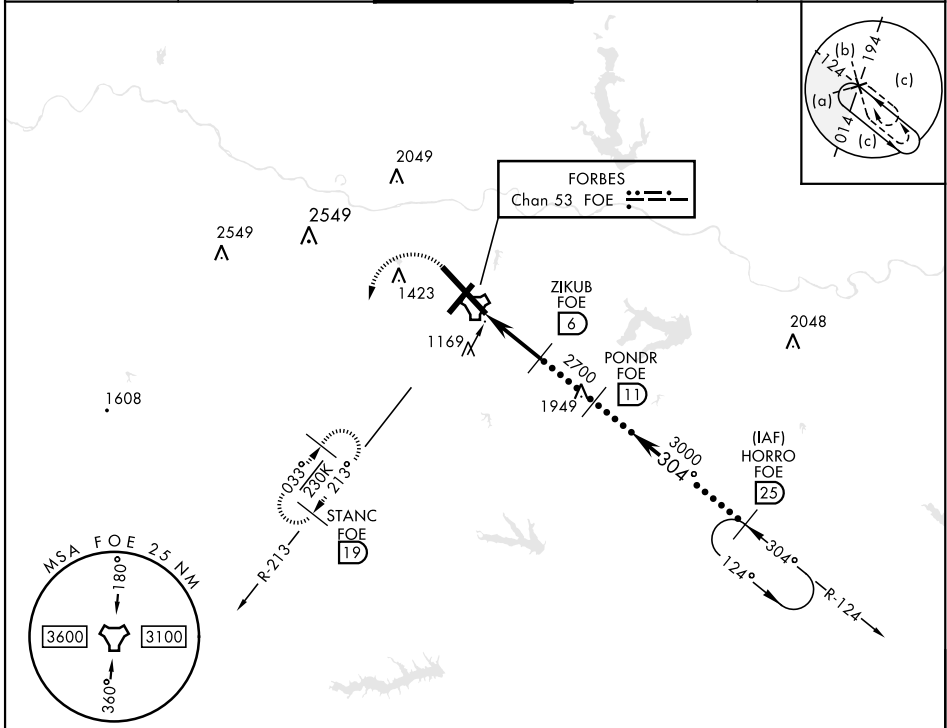
TOPEKA RGNL (KFOE)

**V** \* When ALS inop, increase CAT CDE vis to 1½ miles.

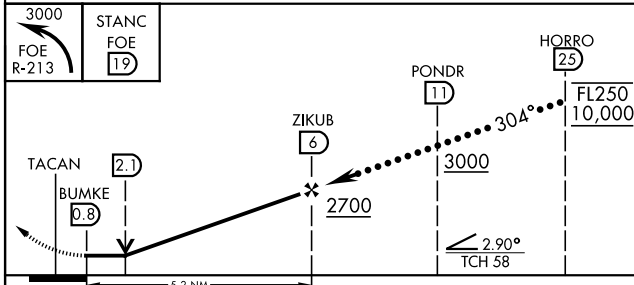


MISSED APPROACH: Climbing left turn to 3000 via heading 190° and FOE TACAN R-213 to STANC/19 DME and hold.

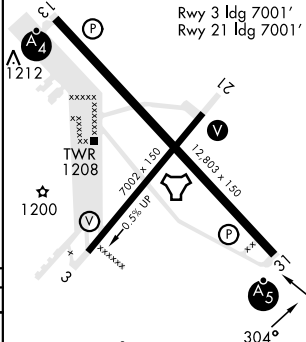
ATIS <b>128.25</b>	KANSAS CITY CENTER <b>123.8 343.7</b>	FORBES TOWER ★ <b>120.8 (CTAF) 340.2</b>	GND CON <b>118.425 275.8</b>	UNICOM <b>122.95</b>
-----------------------	--	---	---------------------------------	-------------------------



EMERG SAFE ALT 100 NM 3600



ELEV 1078	TDZE 1037
-----------	-----------



CATEGORY	C	D	E
S-31 *	1520/50	483 (500-1)	
CIRCLING	1580-1½ 502 (600-1½)	1700-2 622 (700-2)	1720-2¼ 642 (700-2¼)

MIRL Rwy 3-21  
REIL Rwy 3, 13, and 21  
HIRL Rwy 13-31

# HI-TACAN RWY 31

NC-2, 11 JUL 2024 to 08 AUG 2024

NC-2, 11 JUL 2024 to 08 AUG 2024