

| | | | |
|---------------------------|------------------------|-------------------------|---------------------|
| LOC I-TRI 109.9 | APP CRS 230° | Rwy Idg 8000 | TDZE 1518 |
| | | Apt Elev 1519 | |

ILS or LOC RWY 23

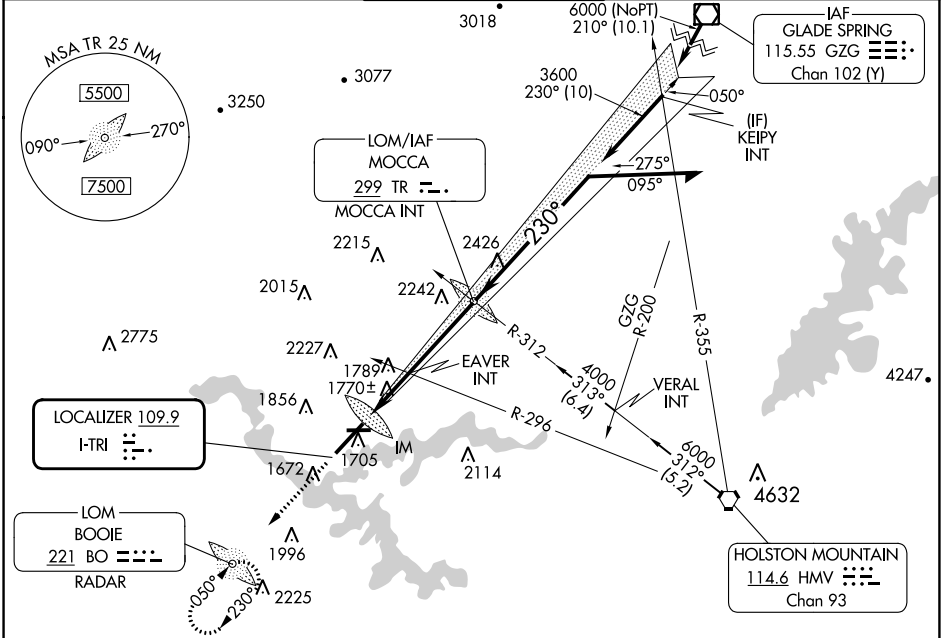
TRI-CITIES (TRI)

ADF or RADAR required.

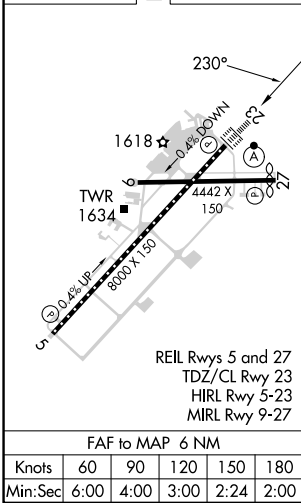
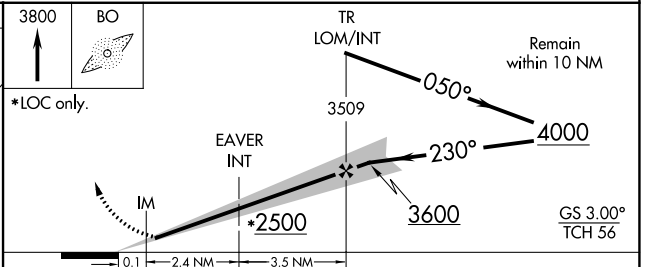
⚠ Circling to Rwy 9 NA at night. Circling NA northwest of Rws 9 and 23. CAUTION: Air traffic control tower 1634 feet MSL located 940 feet right of runway centerline 357 feet from runway threshold. When control tower closed: S-ILS 23 increase visibilities to RVR 4000 all Cats and S-LOC 23 increase visibilities ½ SM all Cats.

ALSIF-2 **(A)** MISSED APPROACH: Climb to 3800 direct BOOIE LOM/RADAR and hold.

| | | | | |
|-----------------------|--|---|-------------------------------|-------------------------|
| ATIS 118.25 | TRI-CITY APP CON ★ 134.425 349.0 | TRI-CITY TOWER ★ 119.5 (CTAF) 257.8 | GND CON 121.7 348.6 | UNICOM 122.95 |
|-----------------------|--|---|-------------------------------|-------------------------|



| | |
|-----------|--------------------|
| ELEV 1519 | D TDZE 1518 |
|-----------|--------------------|



| CATEGORY | A | B | C | D |
|--|--------------------------|--------------------------|--------------------------|------------------------|
| S-ILS 23 | 1718/18 200 (200-½) | | | |
| S-LOC 23 | 2500/40 982 (1000-¾) | 2500-1 982 (1000-1) | 2500-2½ 982 (1000-2½) | 982 (1000-2½) |
| C CIRCLING | 2500-1¼ 981 (1000-1¼) | 2500-1½ 981 (1000-1½) | 2500-3 981 (1000-3) | |
| EAVER FIX MINIMUMS (DUAL VOR RECEIVERS REQUIRED) | | | | |
| S-LOC 23 | 2020/24 502 (600-½) | 2020/55 502 (600-1) | | |
| C CIRCLING | 2120-1 601 (700-1) | 2180-1 661 (700-1) | 2320-2¼ 801 (900-2¼) | 2500-3 981 (1000-3) |

SE-1, 11 JUL 2024 to 08 AUG 2024

SE-1, 11 JUL 2024 to 08 AUG 2024